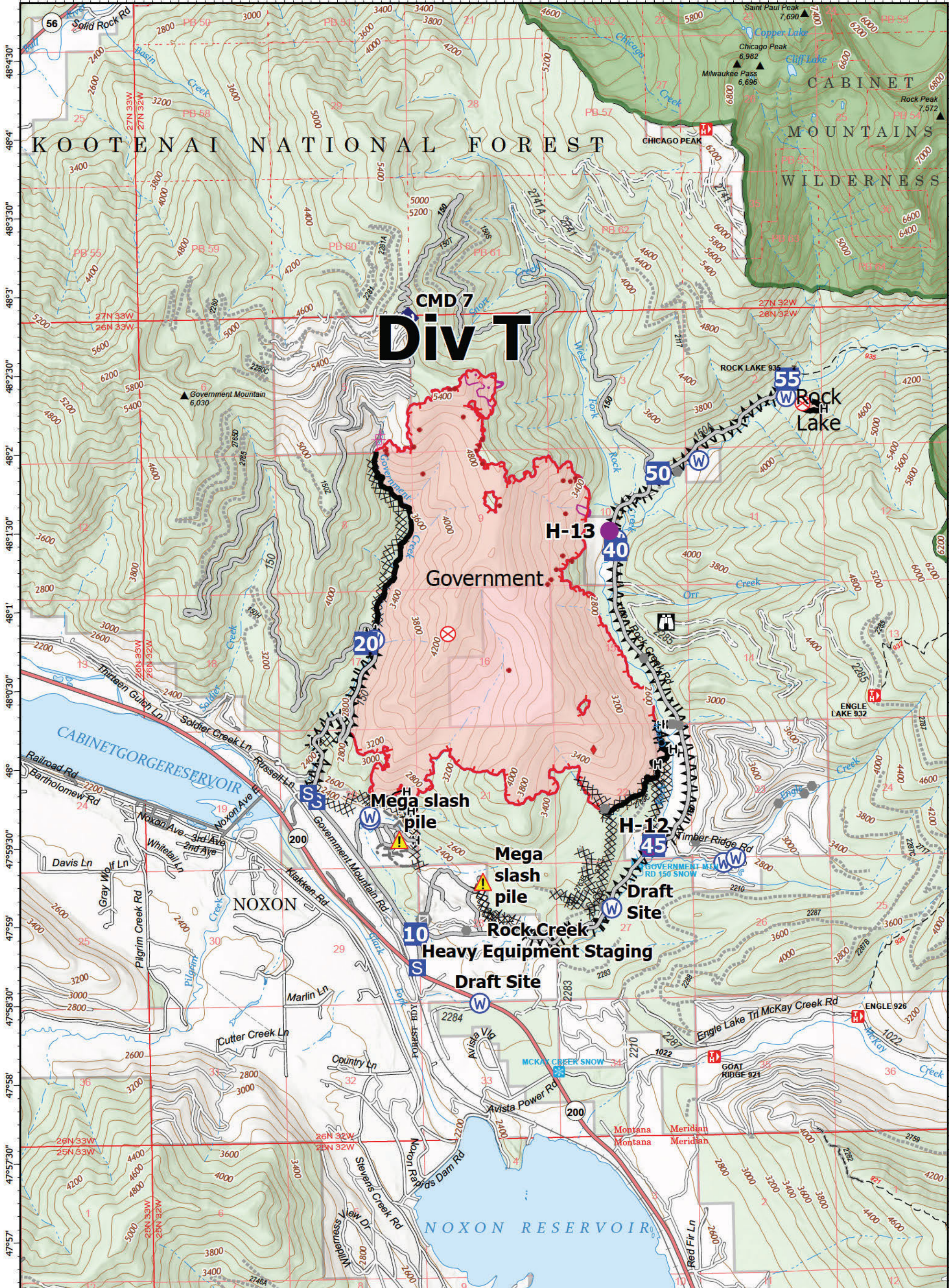


-115°48' -115°47'30" -115°47' -115°46'30" -115°46' -115°45'30" -115°45' -115°44'30" -115°44' -115°43'30" -115°43' -115°42'30" -115°42' -115°41'30" -115°41' -115°40'30" -115°40' -115°39'30"



Div T

CMD 7

Government

Mega slash pile

Mega slash pile

Draft Site

Rock Creek Heavy Equipment Staging

Draft Site

Operations
 Government
 MTKNF-002240
 10/1/2022
 2,786 acres

Fire perimeter updated from IR on 9/30/2022 @ 2143



- | | | | | |
|--------------|-------------------------|----------------------|-------------------------|---------------------|
| Helispot | Repeater | IR Scattered Heat | Planned Dozer Line | State Primary Route |
| Drop Point | Hazard | Contained | Access or Improved Road | Gravel Road |
| Staging Area | Water Source | Uncontained | Other | Dirt Road |
| Lookout | IR Isolated Heat Source | Completed Dozer Line | Wildfire Perimeter | Unimproved Road |
| Fire Origin | Possible IR Heat Source | Completed Fuel Break | Forest Service Land | USFS Roads Closed |
| Other | IR 1957 20220919 | Completed Hand Line | Federal Wilderness | Trail |
| Gate | | | | |
| Bridge | | | | |



Register Type 3
 10/1/2022 0418
 North American 1983
 Datum, Lat/Long Grid

Operations