

Clover Fire

08/14 - 08/18/2022

Beaverhead – Deerlodge NF

MT-BDF-006132

P1 PVS5 (0102), PF.FSPVS5C22.00.1

CHECK IN, DEMOB, IAP, MAPS, SUBMIT TIME, ICS-214:



<https://linktr.ee/2022Clover>

Incident email: 2022.clover@firenet.gov

INCIDENT OBJECTIVES	1. INCIDENT NAME Clover Fire	2. DATE 8/13/2022	3. TIME 1400
----------------------------	--	-----------------------------	------------------------

4. OPERATIONAL PERIOD: 8/14 – 8/18/2022

5. LEADER’S INTENT, MGMT REQUIREMENTS, and INCIDENT OBJECTIVES:

Leader’s Intent:

- Minimize risk to firefighters and public.
- Ensure risk management decisions are commiserate with values at risk while utilizing confine/contain suppression strategy.

Management Requirements:

1. Reduce risks to all personnel from the potential exposure to COVID-19 by adhering to current CDC Guidelines. Immediately report any possible exposures and positive COVID tests as well as actions taken to the Agency Administrator. CDC Guidelines can be found here: <https://www.cdc.gov/coronavirus/2019-ncov/your-health/covid-by-county.html>. Current Covid level in Madison County is Medium as of 8/10/22.

Incident Objectives:

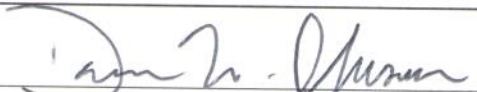
1. Provide for incident personnel safety by utilizing the risk management process, commensurate with values at risk.
2. Provide for public safety by limiting access through the area closure [Gravelly Range Rd (NFSR 290) and Warm Spring Rd (NFSR 163)].
3. Build and maintain relationships with Madison County, local Fire Departments, Forest permittees and outfitters, and the public by communicating accurate info in a timely manner.
4. Contain the fire within Warm Springs drainage by utilizing existing barriers and different fuel types, in conjunction with planned ignition. Continue to identify and recon contingency lines, along with Management Action Points.
5. Minimize impacts to natural resource values and limit suppression disturbance in the Warm Springs drainage by utilizing minimum impact suppression tactics.

6. WEATHER FORECAST FOR OPERATIONAL PERIOD: *See attached weather forecast

7. SPECIAL INSTRUCTIONS:
 Adhere to the Beaverhead-Deerlodge travel map. DO NOT drive off road in the fire area.
 Please see the Covid safety plan in the IAP folder accessed by the QR code.
 The closure map is also in the IAP folder accessed by the QR code.

8. Attachments (XX if attached)

<u>XX</u> Weather Forecast	<u>XX</u> Medical Plan (ICS 206)
<u>XX</u> Organization List (ICS 203)	<u>XX</u> Incident Map
<u>XX</u> Assignment List (ICS 204)	<u>XX</u> Safety Message
<u>XX</u> Communications Plan (ICS 205)	<u>XX</u> Air Ops (ICS 220)

9. PREPARED BY: R. Walker, RESL (t)	10. APPROVED BY: D. Johnson, ICT3 
---	---

Spot Forecast for Clover Fire

DISCUSSION...After a chance for a few showers or thunderstorms this afternoon with breezy westerly winds, it will generally be warm, dry with terrain-driven wind through Wednesday. Monsoon moisture may arrive by Thursday to bring the chance for thunderstorms again.

.SUNDAY...

- * Sky/Weather.....Partly cloudy. Chance of showers and thunderstorms.
- * CWR (> 0.10 Inch)...10 percent.
- * LAL.....3.
- * Max Temperature.....70-75.
- * Min Humidity.....15-20 percent.
- * Wind (20 ft).....West 6 to 13 mph with gusts to 25 mph.
- * Haines Index.....4 low.
- * Precip Amount.....0.01 inches.

.SUNDAY NIGHT...

- * Sky/Weather.....Partly cloudy. Slight chance of showers and thunderstorms in the evening.
- * CWR (> 0.10 Inch)...10 percent.
- * LAL.....2.
- * Min Temperature.....47-52.
- * Max Humidity.....64-68 percent.
- * Wind (20 ft).....West 6 to 10 mph becoming downslope 3 to 6 mph by midnight.
- * Precip Amount.....0.01 inches.

.MONDAY...

- * Sky/Weather.....Mostly sunny.
- * CWR (> 0.10 Inch)...0 percent.
- * LAL.....1.
- * Max Temperature.....69-74.
- * Min Humidity.....13-16 percent.
- * Wind (20 ft).....Downslope 3 to 6 mph becoming west-northwest 8 to 12 mph with gusts to 18 mph in the afternoon.
- * Haines Index.....4 low.
- * Precip Amount.....0.00 inches.

.MONDAY...

- * Sky/Weather.....Mostly sunny.
- * CWR (> 0.10 Inch)...0 percent.
- * LAL.....1.
- * Max Temperature.....69-74.
- * Min Humidity.....12-17 percent.
- * Wind (20 ft).....Northeast around 5 mph shifting to the west
7-9 mph in the afternoon.
- * Haines Index.....4 low.
- * Precip Amount.....0.00 inches.

.MONDAY NIGHT...

- * Sky/Weather.....Mostly clear.
- * CWR (> 0.10 Inch)...0 percent.
- * LAL.....1.
- * Min Temperature.....47-51.
- * Max Humidity.....38-42 percent.
- * Wind (20 ft).....West 5 to 8 mph becoming downslope 3 to 6
mph overnight.
- * Precip Amount.....0.00 inches.

.TUESDAY...

- * Sky/Weather.....Sunny.
- * CWR (> 0.10 Inch)...0 percent.
- * LAL.....1.
- * Max Temperature.....71-76.
- * Min Humidity.....13-18 percent.
- * Wind (20 ft).....Downslope 2 to 4 mph becoming west-northwest
4 to 8 mph in the afternoon.
- * Haines Index.....5 moderate.
- * Precip Amount.....0.00 inches.

.FORECAST DAYS 3 THROUGH 7...

.WEDNESDAY...

Mostly clear. Lows 48-53. Highs 72-77. Diurnal terrain winds to 10 mph.

.THURSDAY...

Partly cloudy with chance of showers and slight chance of thunderstorms. Lows 47-52. Highs 70-75. Diurnal terrain winds to 10 mph.

.FRIDAY...

Mostly cloudy with chance of showers and thunderstorms. Lows 48-53. Highs 65-70. Variable winds up to 10 mph.

.SATURDAY...

Partly cloudy. Chance of showers and thunderstorms. Lows 45-50. Highs 66-71.

.SUNDAY...

Partly cloudy. Slight chance of showers and thunderstorms. Lows 47-52.

ORGANIZATION ASSIGNMENT LIST		9. Operations Section	
1. Incident Name Clover Fire		Chief	
		Deputy(t)	
		a. Divisions/Groups	
2. Date 8/13/2022	3. Time 1400	Branch Director	
4. Operational Period 8/14 -8/18/2022 0700-2200		Deputy	
		Division A/Z	
		Division/Group	
5. Incident Commander and Staff		Division/Group	
Incident Commander	Aaron Graeser	Division/Group	
Deputy Incident Commander		Division/Group	
Incident Commander(t)		Division/Group	
Safety Officer		b. Divisions/Groups	
Information Officers	Cat McRae	Branch Director	
Liaison Officer		Deputy	
6. Agency Representatives		Division/Group	
Agency	Name	Division/Group	
USFS	Dale Olson	Division/Group	
		Division/Group	
		Division/Group	
		c. Divisions/Groups	
7. Planning Section		Branch Director	
		Deputy	
Chief		Division/Group	
Resources Unit (t)		Division/Group	
LTAN		Division/Group	
Situation Unit		Division/Group	
GISS		Division/Group	
Documentation Unit		Division/Group	
Demobilization Unit		d. Air Operations Branch	
Technical Specialists		Air Operations Branch Director	
		Air Attack Supervisor	
		Air Support Supervisor	
		Helicopter Coordinator	
		Air Tanker Coordinator	
8. Logistics Section		10. Finance Section	
		Chief	NR RIST Quoya Waters
Chief		Deputy	
Deputy		Equipment Time Recorder(t)	Niki Exterovich
Supply Unit		Personnel Time Recorder(t)	Molly Moore
Facilities Unit		Compensation/Claims Unit	
Base Camp Manager		Cost Unit(t)	Niki Exterovich
Communications Unit		Prepared by (Planning Section Chief)	
Medical Unit	Mike Sowell	R. Walker, RESL (t)	
Food Unit			

1. BRANCH	2. DIVISION/GROUP Alpha/Zulu	<h1>ASSIGNMENT LIST</h1>					
3. INCIDENT NAME Clover		4. OPERATIONAL PERIOD		DATE 8/14 – 8/18/2022 TIME 0700-2200			
5. OPERATIONS PERSONNEL							
OPERATIONS CHIEF:			TFLD:				
6. RESOURCES ASSIGNED THIS PERIOD							
Request #	STRIKE TEAM/TASK FORCE RESOURCE DESIGNATOR	LEADER	NUMBER PERSONS	TRANS. NEEDED	LAST WORK DAY		
E-18	ENG6 MN Engine 721	Wolf	6	N	8/17		
E-19	ENG3 Tonto Engine 1218	Dimick/Burns(t)	5	N	8/14		
O-45	SMOD AZ- COF Crew 4	Fransisco(t)	10	N	8/21		
O-46	EMPF Sowell		1	N	8/22		
7. OPERATIONS							
<u>Task:</u>							
<ul style="list-style-type: none"> Monitor and patrol for spots as interior of fire continues to burn. Continue suppression repair actions when and where fire activity and conditions warrant. 							
<u>Purpose:</u>							
<ul style="list-style-type: none"> Contain fire in the Middle Warm Springs Creek drainage utilizing fuel type changes, natural breaks, and burnout operations. Maximize the amount of suppression repair work completed prior to returning the incident to the local unit, while still allowing for long-term containment objectives to be successful. 							
<u>End State:</u>							
<ul style="list-style-type: none"> Fire remains west of the Gravelly Range Road (NFSR 290), south of the Warm Springs Road (NFSR 163) and north of the Moose Lake Trail (NFST 6412). 							
8. COMMUNICATIONS							
FUNCTION	CHANNEL	FREQ.	TONE	FUNCTION	CHANNEL	FREQ.	TONE
COMMAND	SEE 205	RX:	RX:				
		TX:	TX:				
TACTICAL	LOCAL	RX:		AIR TO GROUND			
		TX:	RX:				
PREPARED BY (Planning Section Chief)		APPROVED BY (Incident Commander)		DATE		TIME	
R. Walker, RESL (t)		D. Johnson, ICT3		8/13/2022		1400	

INCIDENT RADIO COMMUNICATIONS PLAN		Incident Name CLOVER FIRE		Date/Time Prepared 8/13/2022 1400		Operational Period Date/Time 8/14-8/18/2022	
Ch #	Channel Name/Trunked Radio System Talkgroup	Assignment	RX Freq N or W	TX Freq N or W	Tx Tone/NAC	Mode A, D or M	Remarks
1	PROJECT		168.750	168.750	131.8		
2	EAST DIR		171.425	171.425	123.0		
3	SOUTH BALDY		171.425	164.700	146.2		
4	LAZYPAN	COMMAND 1	171.425	164.700	123.0		
5	ELK LAKE	COMMAND 2	171.425	164.700	156.7		
6	QUEENS HILL		172.325	164.825	151.4		
7	R1 FIRE TAC	TACTICAL	167.1125	167.1125	156.7		
8	COM 1	TACTICAL	168.6125	168.6125	131.8		
9	COM 3	TACTICAL	167.1375	167.1375	131.8		
10	R1 SOA RPT		173.1875	164.3875	114.8		
11	MADCO SHERIFF		EMERGENCY	ONLY			
12	RED	MUTUAL AID	154.070	154.070	156.7		
13	A/G 29	FOREST A/G	166.900	166.900			
14							
15	WHITE	EMS GROUND	155.280	155.280	156.7		
16	TAN	EMS A/G	155.340	155.340	156.7		
Prepared By (Communications Unit) J. Barnes, ICT3(t)				Incident Location Madison MT County State Latitude Longitude			

AIR OPERATIONS SUMMARY (ICS 220)

1. Incident Name: Clover Fire		2. Operational Period: Date From: 8/7/2022 Date To: 8/14/2022 Time From: 0900 Time To: 2000				3. Sunrise: 0620 Sunset: 2120	
4. Remarks (safety notes, hazards, air operations special equipment, etc.): Mission Plan for density altitude and windy conditions. Report any unauthorized UAS activity. Mission plan for being on the deck by sunset. Status current at time of report. Changes occur constantly. PLEASE SEND COST TO bennett.holland@mt.gov			5. Ready Alert Aircraft: Medivac: LF86 Butte Airport KBTM New Incident: order through dispatch			6. Temporary Flight Restriction Number: Altitude: NONE Center Point: NONE	
			8. Frequencies:		AM	FM	9. Fixed-Wing (category/kind/type, make/model, N#, base):
			Air/Air Fixed-Wing	119.9750		Air Tactical Group Supervisor Aircraft: 5-avail. GACC	
			Air/Air Rotary-Wing – Flight Following	119.9750			
7. Personnel:			Name:	Phone Number:			
Air Operations Branch Director				XXX-XXX-XXXX	Air/Ground	166.9000	166.900
Air Support Group Supervisor				XXX-XXX-XXXX	Command	171.4250	164.9875 123.0
Air Tactical Group Supervisor				XXX-XXX-XXXX	Deck Coordinator	163.1000	163.1000
Helicopter Coordinator				XXX-XXX-XXXX	Take-Off & Landing Coordinator	163.1000	163.1000
Helibase Manager			Ben Holland	(406) 529-3585	Air Guard	168.6250 Tone 110.9	168.6250 Tone 110.9
10. Helicopters (use additional sheets as necessary):							
FAA N#	Category/Kind/Type	Make/Model	Base	Available	Start	Remarks	
N144MA	Standard/EU/III	Bell 407	Butte KBTM	0930	0900	B-D IA/Clover	
N205GE	Restricted/CWN/II	Bell UH-1H	Butte KBTM	0930	0900	B-D IA/Clover	
11. Prepared by: Name: Ben Holland Position/Title: HEBM (T) Signature: _____							
ICS 220, Page 1				Date/Time: 8/6/2022 10:20 PM			

SAFETY MESSAGE

INCIDENT NAME: CLOVER

OPERATIONAL PERIOD: 08/14 - 08/19 2022

MAJOR HAZARDS:

- DRIVING
- WEATHER CONCERNS
- GRAVITY HAZARDS
- BEARS/MOOSE/MT LION

Weed spraying operations:

Be sure to wear all your PPE! Avoid splashing and spilling!

Safety Considerations

-Keep speeds slow to avoid more wash boarding and look out for public on the roadways

-Steep slopes and fire weakened ground can increase the risk of gravity hazards- heads up!

-Snags can fall into a secondary tree/snag and break a top or high winds can even break out pieces of green trees. Be on the lookout any time you are under overhead hazards.

-Maintain your diligence with food storage – grizzly bears and mountain lions can be attracted to trash, food and hygiene products

-Keep an eye on the weather and be aware of potential thunderstorms in the area for winds, lightning and road condition changes

Common Denominators of Fire Behavior On Tragedy Fires

***Most incidents** happen on the **smaller fires** or on **isolated portions** of larger fires.

*Most fires **are innocent in appearance** before the “flare-ups” or “blow-ups”. In some cases, tragedies occur in the **mop-up stage**.

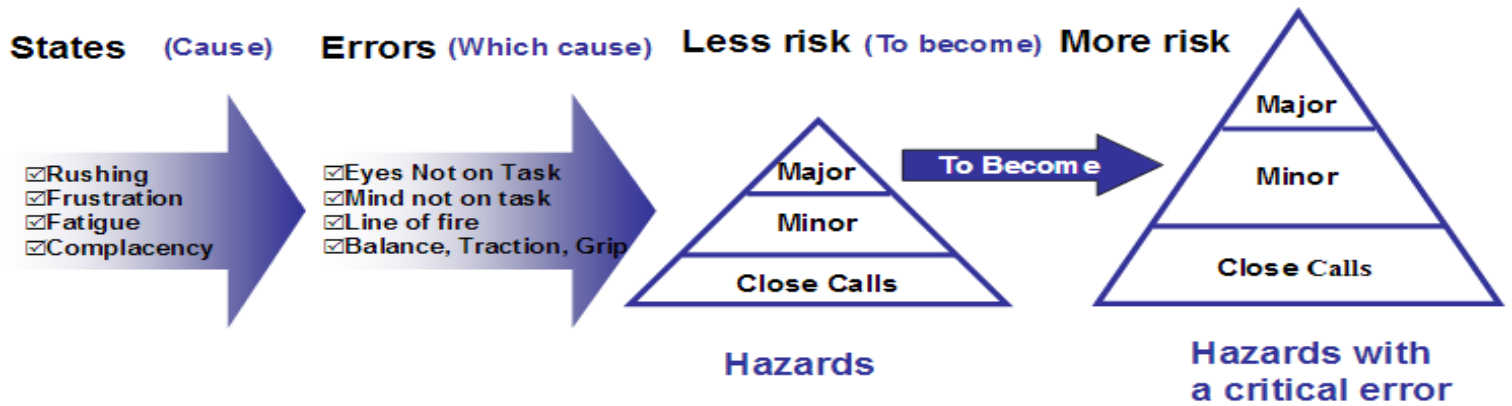
***Flare-ups** generally occur in **deceptively light fuels**.

***Fires run uphill** surprisingly fast in **chimneys, gullies, chutes** and on steep slopes.

*Some suppression tools, such as **helicopters or air tankers**, can **adversely affect fire behavior**. The blasts of air from low flying helicopters and air tankers have been known to cause flare-ups.

NARRATIVE:

Human Error - Risk Patterns



Recognizing the patterns that cause injury (like how fatigue can cause lack of balance or mind not on task) will help you to spot situations with increased risk for yourself and others. If you practice it enough, it will help you become more aware.

Critical Error Reduction Techniques

1. Self-Trigger on the State to prevent or avoid making the error – We can learn to trigger on one of these states to help prevent making one of the four errors that get us hurt. Even when we have to rush, we can use the realization to improve our eyes on task and mind on task safety skills to increase alertness and focus extra hard on the task at hand.
2. Analyze close calls and small injuries to prevent big ones - Learn from mistakes. When we first start trying to trigger on the state to prevent the error, we may still make some mistakes. It takes time and practice to improve safety skills. We need to analyze those errors and close calls to see what states were involved and if it wasn't a state maybe it was a habit we need to work on. It takes practice but is very effective at controlling the frequency and severity of injury.
3. Observe others for the State to Error Patterns - Here is where the most help with complacency can be found. When we observe others in the state to error pattern, we know something serious could happen.
4. Work on our Habits - Personal safety skills can be improved like looking before you move and always checking your footing. Try to always move your eyes before you move your body. Moving your eyes before you move your body (or car) is your best defense against injury.

Fireline Leadership

The most essential element of successful wildland firefighting is competent and confident leadership. Leadership means providing purpose, direction and motivation for wildland firefighters working to accomplish difficult tasks under dangerous, stressful circumstances. In confusing and uncertain situations, a good operational leader will:

- TAKE CHARGE of assigned resources.
- MOTIVATE firefighters with a “can do safely” attitude.
- DEMONSTRATE INITIATIVE by taking action in the absence of orders.
- COMMUNICATE by giving specific instructions and asking for feedback.
- SUPERVISE at the scene of action.

Steps to Effective Fireline Leadership:

Determine tasks to be assigned, establish procedures to monitor and assess the crew, inform the crew members of fire assignment progress.

Establish and reaffirm norms of conduct for behavior in the group and insist that people keep each other informed on what they were doing and the reasons for their actions, and the situational model that gave rise to those reasons and actions.

This would include: 1. Here's what I think we face 2. Here's what I think we should do 3. Here's why 4. Here's what we should keep our eye on 5. Now talk to me.

Discuss ways to improve performance, ask for input; discuss problems

Tell crew members what to do, reallocate work in a dynamic situation, focus crew attention to task, provide feedback to crew on performance

TEAM SAFETY OFFICER:

Jon McLaughlin SOFR

Medical Incident Report – 8 Line

FOR A NON-EMERGENCY INCIDENT, WORK THROUGH CHAIN OF COMMAND TO REPORT AND TRANSPORT INJURED PERSONNEL AS NECESSARY.

FOR A MEDICAL EMERGENCY: IDENTIFY ON SCENE INCIDENT COMMANDER BY NAME AND POSITION AND ANNOUNCE "MEDICAL EMERGENCY" TO INITIATE RESPONSE FROM IMT COMMUNICATIONS/DISPATCH.

Use the following items to communicate situation to communications/dispatch.

1. CONTACT COMMUNICATIONS / DISPATCH (Verify correct frequency prior to starting report)

Ex: "Communications, Div. Alpha. Stand-by for Emergency Traffic."

2. INCIDENT STATUS: Provide incident summary (including number of patients) and command structure.

Ex: "Communications, I have a Red priority patient, unconscious, struck by a falling tree. Requesting air ambulance to Forest Road 1 at (Lat./Long.) This will be the Trout Meadow Medical, IC is TFLD Jones. EMT Smith is providing medical care."

Severity of Emergency / Transport Priority	<input type="checkbox"/> RED / PRIORITY 1 Life or limb threatening injury or illness. Evacuation need is IMMEDIATE <i>Ex: Unconscious, difficulty breathing, bleeding severely, 2° – 3° burns more than 4 palm sizes, heat stroke, disoriented.</i> <input type="checkbox"/> YELLOW / PRIORITY 2 Serious Injury or illness. Evacuation may be DELAYED if necessary. <i>Ex: Significant trauma, unable to walk, 2° – 3° burns not more than 1-3 palm sizes.</i> <input type="checkbox"/> GREEN / PRIORITY 3 Minor Injury or illness. Non-Emergency transport <i>Ex: Sprains, strains, minor heat-related illness.</i>
Nature of Injury or Illness & Mechanism of Injury	Brief Summary of Injury or Illness <i>(Ex: Unconscious, Struck by Falling Tree)</i>
Transport Request	<i>Air Ambulance / Short Haul/Hoist Ground Ambulance / Other</i>
Patient Location	<i>Descriptive Location & Lat. / Long. (WGS84)</i>
Incident Name	<i>Geographic Name + "Medical" (Ex: Trout Meadow Medical)</i>
On-Scene Incident Commander	<i>Name of on-scene IC of Incident within an Incident (Ex: TFLD Jones)</i>
Patient Care	<i>Name of Care Provider (Ex: EMT Smith)</i>

3. INITIAL PATIENT ASSESSMENT: Complete this section for each patient as applicable (start with the most severe patient)

Patient Assessment:
See IRPG page 106

Treatment:

4. TRANSPORT PLAN:

Evacuation Location (if different): *(Descriptive Location (drop point, intersection, etc.) or Lat. / Long.)* Patient's ETA to Evacuation Location:

Helispot / Extraction Site Size and Hazards:

5. ADDITIONAL RESOURCES / EQUIPMENT NEEDS:

Example: Paramedic/EMT, Crews, Immobilization Devices, AED, Oxygen, Trauma Bag, IV/Fluid(s), Splints, Rope rescue, Wheeled litter, HAZMAT, Extraction

6. COMMUNICATIONS: Identify State Air/Ground EMS Frequencies and Hospital Contacts as applicable

Function	Channel Name/Number	Receive (RX)	Tone/NAC *	Transmit (TX)	Tone/NAC *
COMMAND					
AIR-TO-GRND					
TACTICAL					

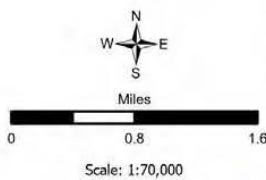
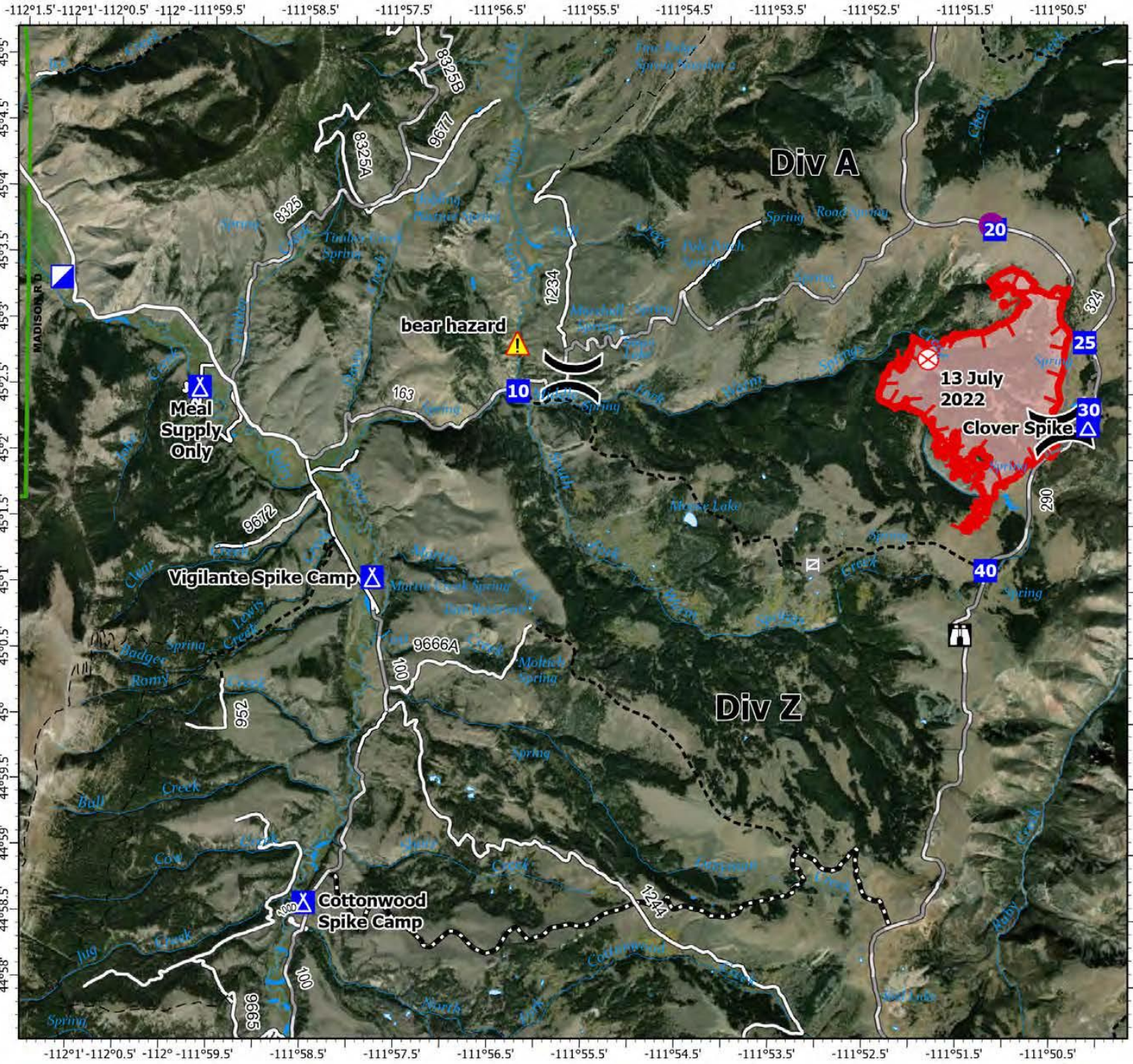
7. CONTINGENCY: Considerations: *If primary options fail, what actions can be implemented in conjunction with primary evacuation method? Be thinking ahead.*

8. ADDITIONAL INFORMATION : *Updates/Changes, etc.*

IAP
Clover
MT-BDF-006132
08/11/2022

1101 acres from IR and Field
 Observation 8/05/2022 0101 -
 8/10/2022

-  Helispot
-  Division Break
-  Incident Command Post
-  Drop Point
-  Camp
-  Lookout
-  Fire Origin
-  Gate
-  Hazard
-  Other
-  Uncontained Wildfire Daily Fire Perimeter



8/10/2022 1642
 North American 1983 Datum, Lat,Long Grid

UNIT LOG

INCIDENT NAME:

2. DATE PREPARED

3. TIME PREPARED

4. UNIT NAME/DESIGNATORS

5. UNIT LEADER (NAME AND POSITION)

6. OPERATIONAL PERIOD

7. PERSONNEL ROSTER ASSIGNED

NAME	ICS POSITION	HOME BASE

8. ACTIVITY LOG (CONTINUE ON REVERSE)

TIME	MAJOR EVENTS