

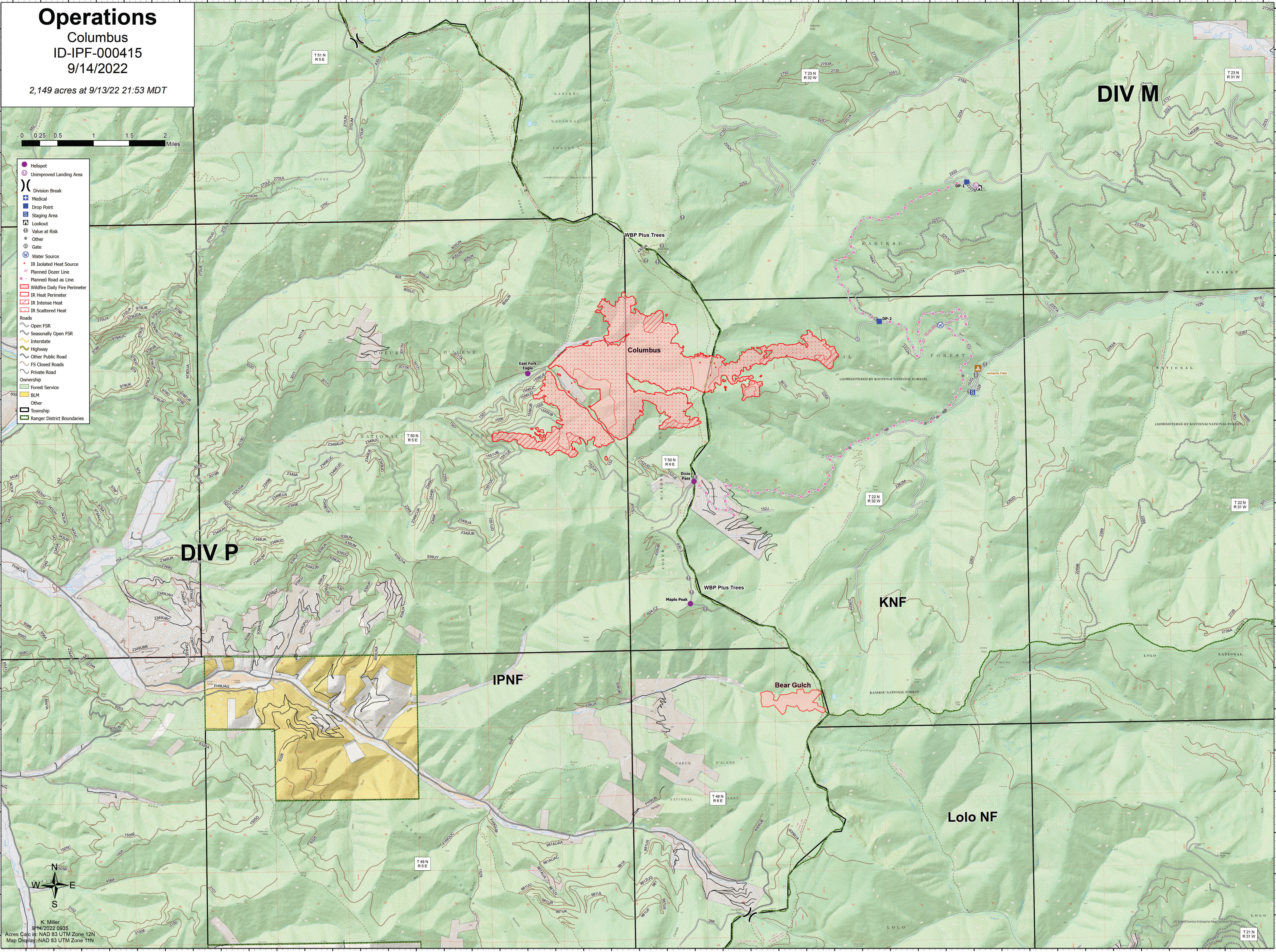
Operations

Columbus
ID-IPF-000415
9/14/2022

2,149 acres at 9/13/22 21:53 MDT



- Helispot
- Unimproved Landing Area
- Division Break
- Medical
- Drop Point
- Staging Area
- Lookout
- Value at Risk
- Other
- Gate
- Water Source
- IR Isolated Heat Source
- Planned Dozer Line
- Planned Road as Line
- Wildfire Daily Fire Perimeter
- IR Heat Perimeter
- IR Intense Heat
- IR Scattered Heat
- Roads
 - Open FSR
 - Seasonally Open FSR
 - Interstate
 - Highway
 - Other Public Road
 - FS Closed Roads
 - Private Road
- Ownership
 - Forest Service
 - BLM
 - Other
- Township
- Ranger District Boundaries



DIV M

DIV P

IPNF

KNF

Lolo NF

Columbus

East Fork Eagle

Maple Peak

Diola Pass

WBP Plus Trees

WBP Plus Trees

Bear Gulch



K. Miller
9/14/2022 0935
Acres Calc in: NAD 83 UTM Zone 12N
Map Display: NAD 83 UTM Zone 11N

US Forest Service Enterprise Map Services