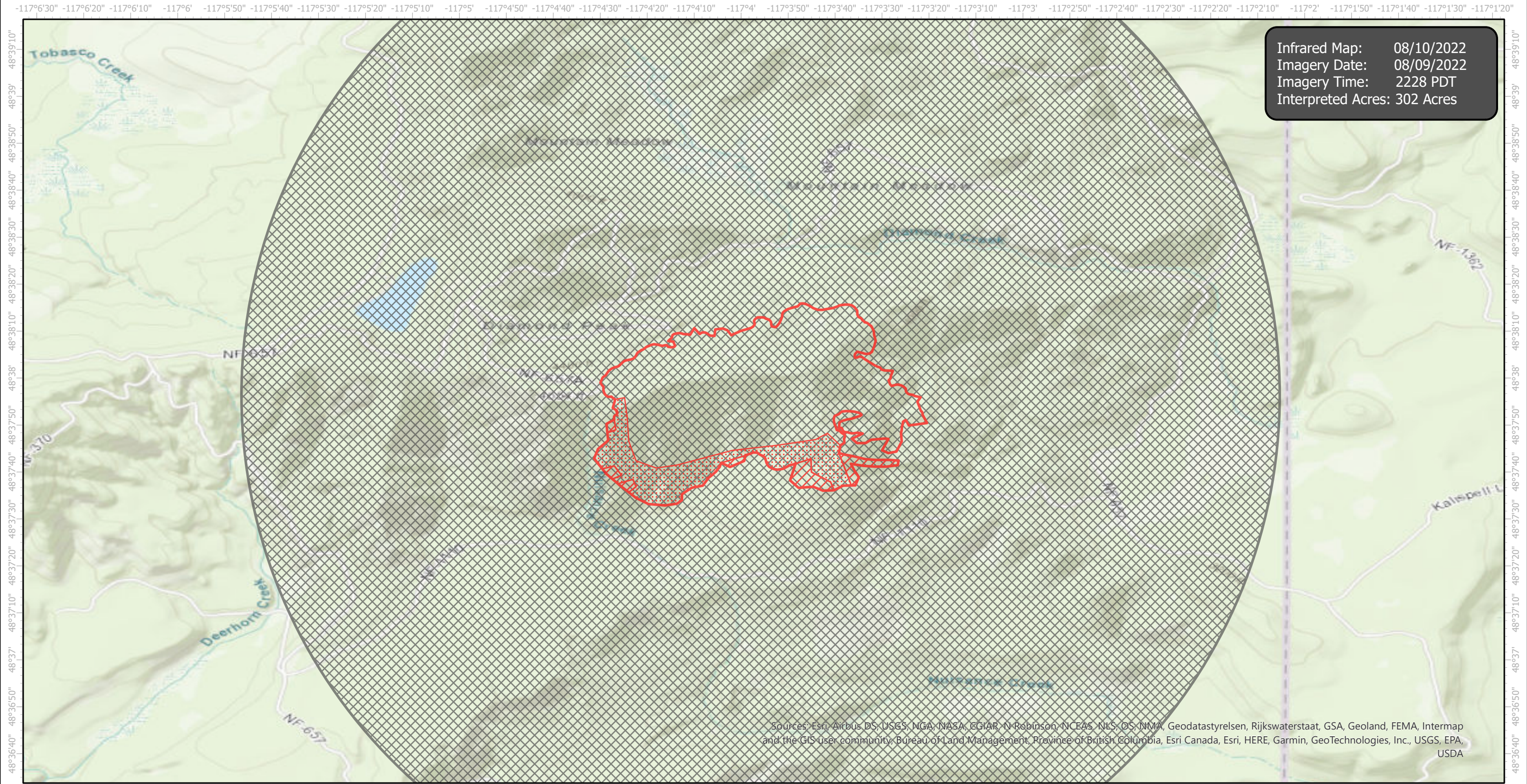


# DiamondWatch Infrared Map

Incident # (ID-IPF-000212)



Infrared Map: 08/10/2022  
Imagery Date: 08/09/2022  
Imagery Time: 2228 PDT  
Interpreted Acres: 302 Acres

Sources: Esri, Airbus DS, USGS, NGA, NASA, EGIAR, N Robinson, NCEAS, NLS, OS, NMA, Geodatastyrelsen, Rijkswaterstaat, GSA, Geoland, FEMA, Intermap and the GIS user community, Bureau of Land Management, Province of British Columbia, Esri Canada, Esri, HERE, Garmin, GeoTechnologies, Inc., USGS, EPA, USDA

N  
W E  
S  
GCS WGS 1984  
Scale: 1:24,000

Cloud Cover  
IR Intense Heat  
IR Heat Perimeter  
IR Scattered Heat

0 1 2 Miles

Infrared Interrupter: Daniel LeVrier  
email: daniel.levrier@usda.gov