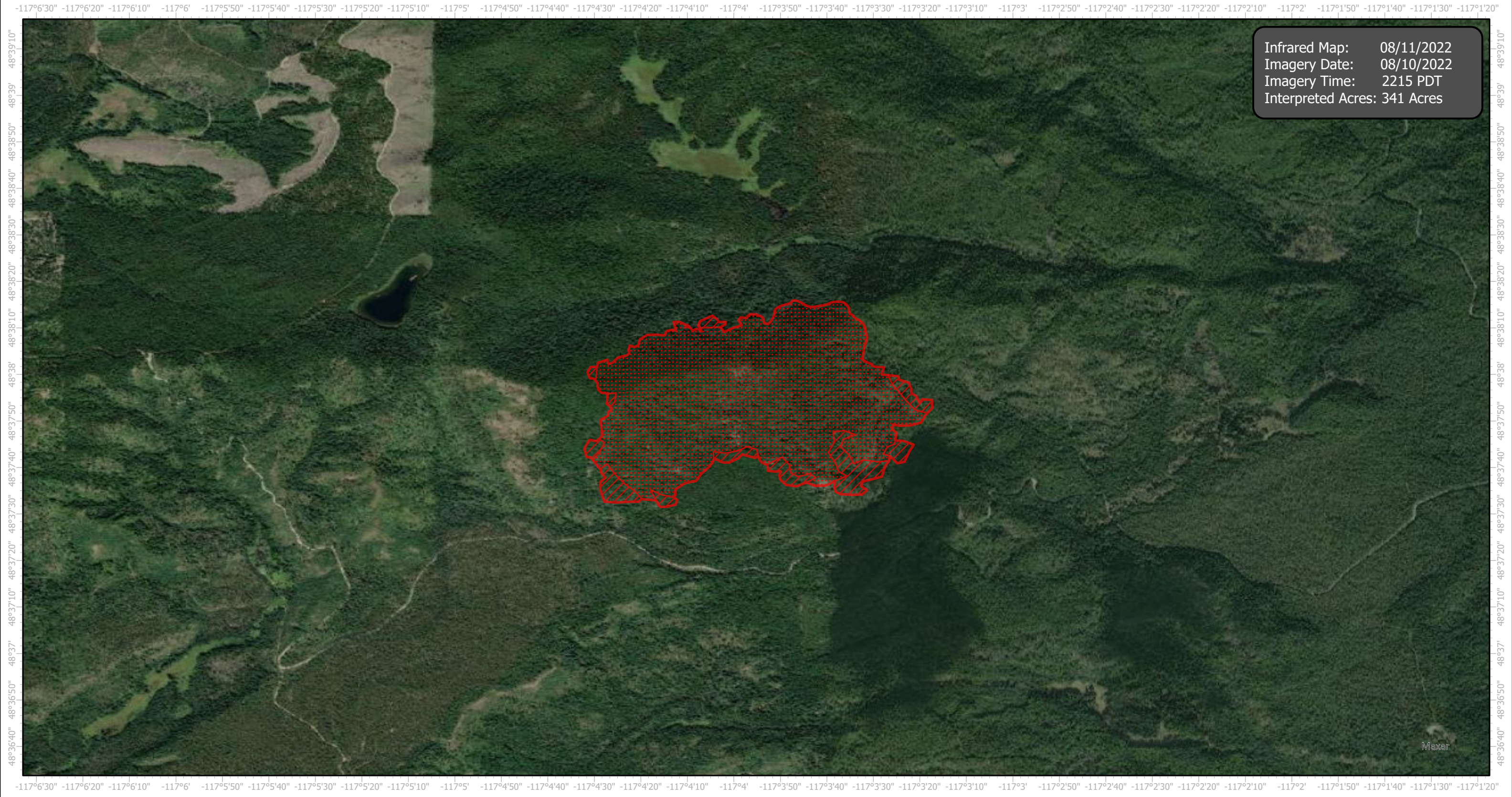


DiamondWatch Infrared Map

Incident # (ID-IPF-000212)



Infrared Map: 08/11/2022
Imagery Date: 08/10/2022
Imagery Time: 2215 PDT
Interpreted Acres: 341 Acres

GCS WGS 1984
Scale: 1:24,000

0 1 2 Miles

- IR Heat Perimeter
- IR Intense Heat
- IR Scattered Heat

Infrared Interrupter: Daniel LeVrier
email: daniel.levrier@usda.gov