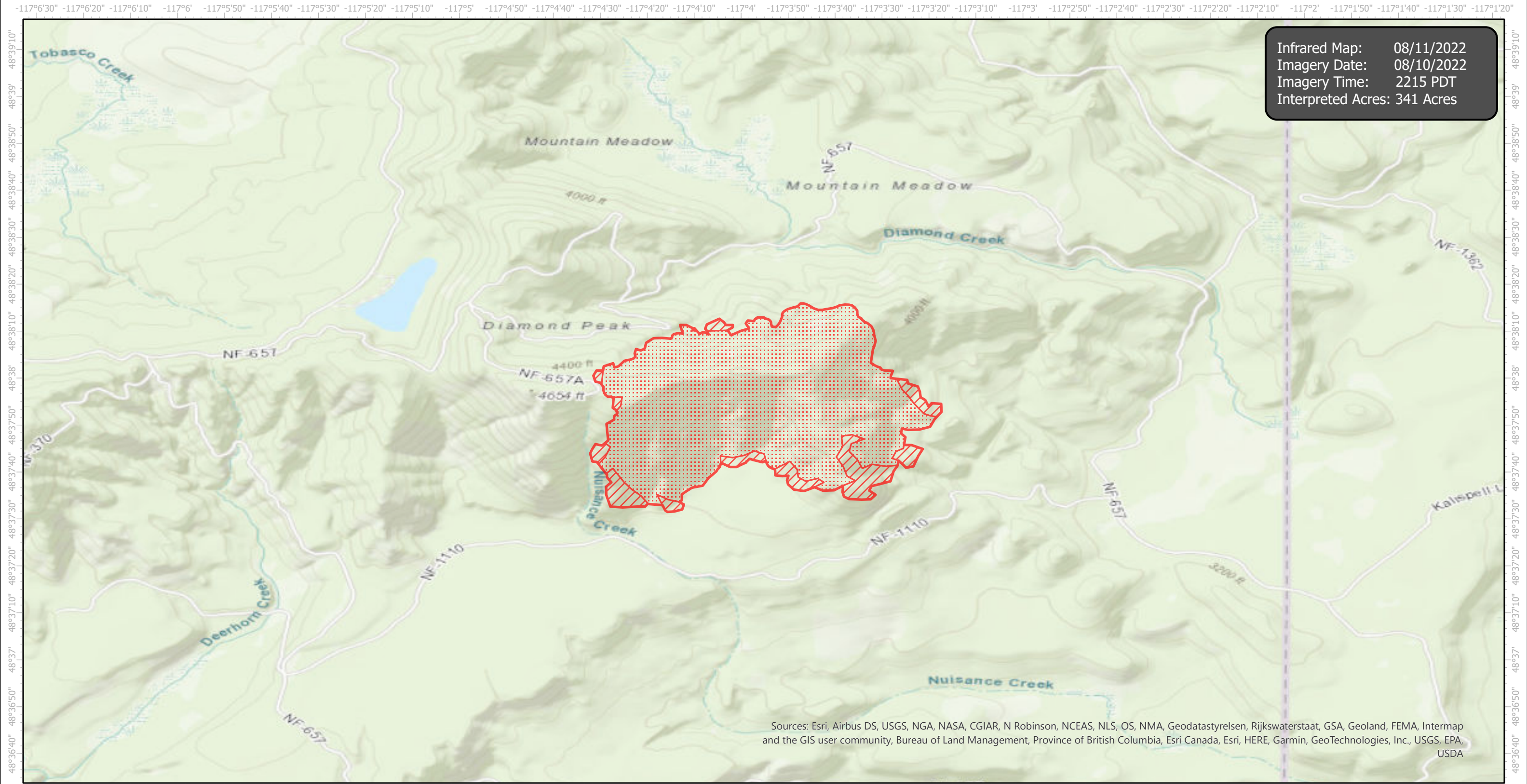


DiamondWatch Infrared Map

Incident # (ID-IPF-000212)



Infrared Map: 08/11/2022
Imagery Date: 08/10/2022
Imagery Time: 2215 PDT
Interpreted Acres: 341 Acres

Sources: Esri, Airbus DS, USGS, NGA, NASA, CGIAR, N Robinson, NCEAS, NLS, OS, NMA, Geodatastyrelsen, Rijkswaterstaat, GSA, Geoland, FEMA, Intermap and the GIS user community, Bureau of Land Management, Province of British Columbia, Esri Canada, Esri, HERE, Garmin, GeoTechnologies, Inc., USGS, EPA, USDA



- IR Heat Perimeter
- IR Intense Heat
- IR Scattered Heat

Infrared Interrupter: Daniel LeVrier
email: daniel.levrier@usda.gov