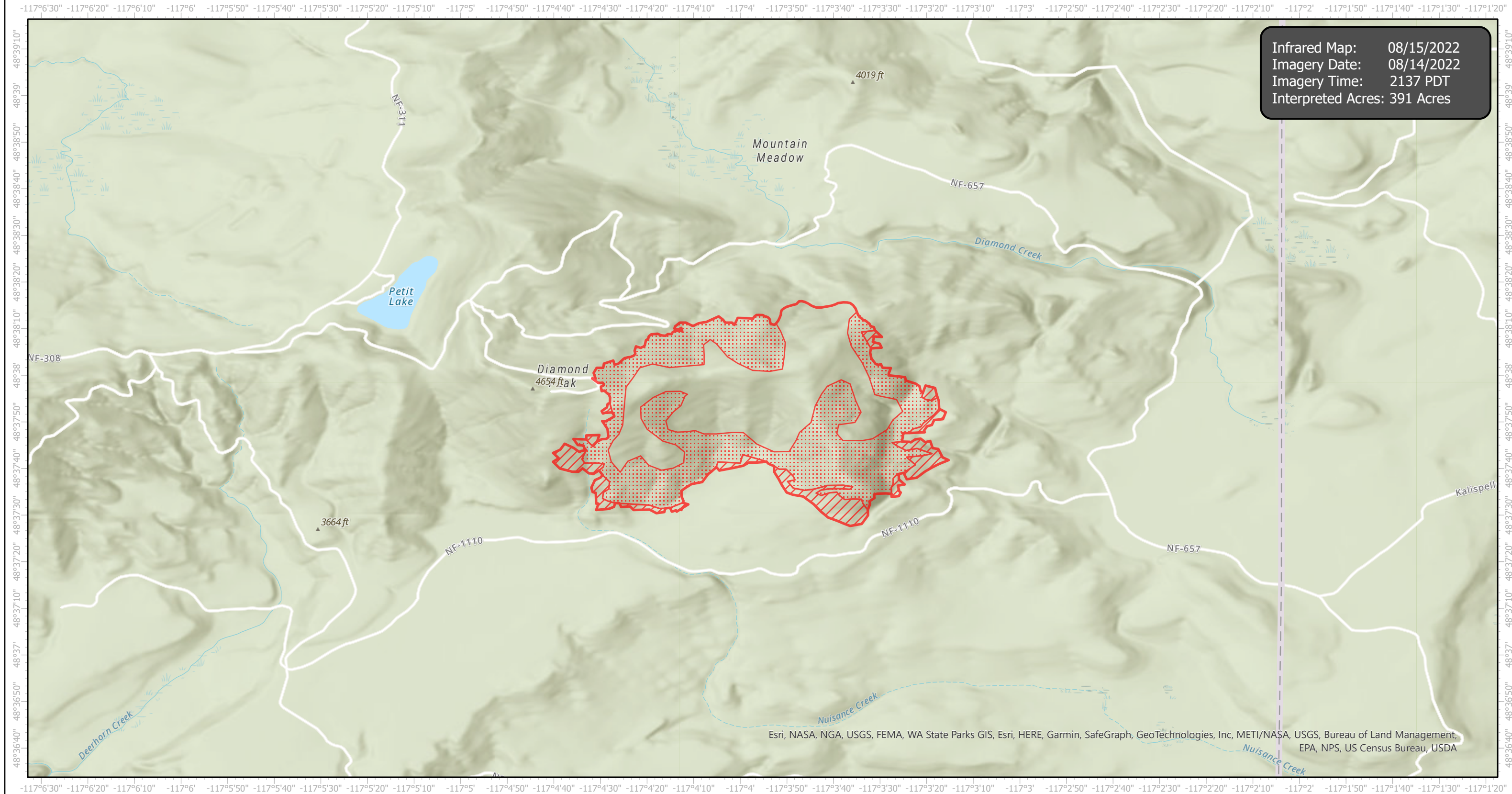


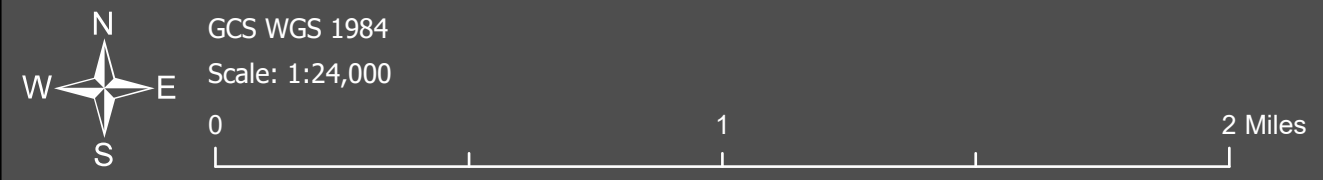
DiamondWatch Infrared Map

Incident # (ID-IPF-000212)



Infrared Map: 08/15/2022
Imagery Date: 08/14/2022
Imagery Time: 2137 PDT
Interpreted Acres: 391 Acres

Esri, NASA, NGA, USGS, FEMA, WA State Parks GIS, Esri, HERE, Garmin, SafeGraph, GeoTechnologies, Inc, METI/NAASA, USGS, Bureau of Land Management, EPA, NPS, US Census Bureau, USDA



- IR Heat Perimeter
- IR Intense Heat
- IR Scattered Heat

Infrared Interrupter: Daniel LeVrier
email: daniel.levrier@usda.gov