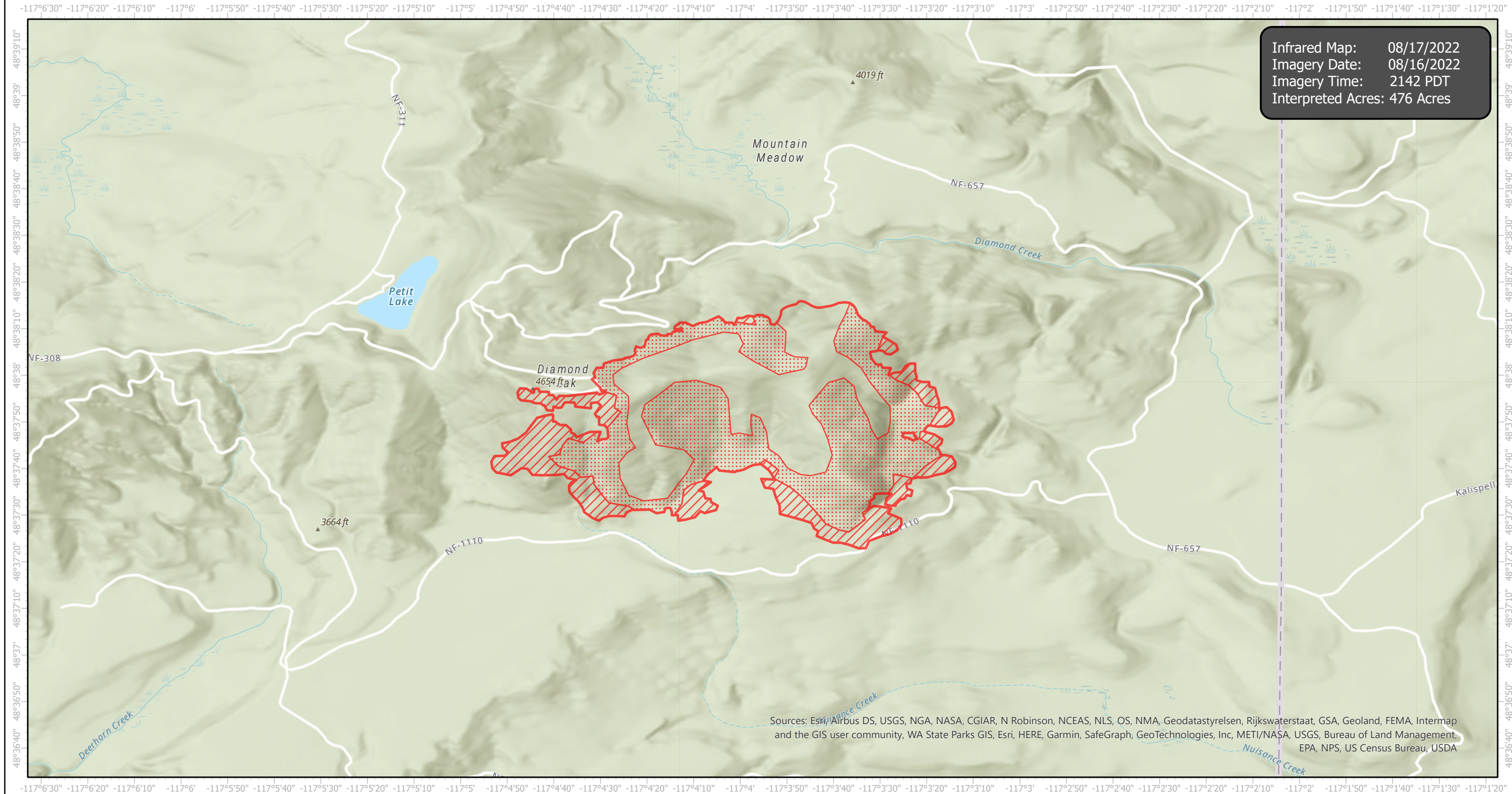


# DiamondWatch Infrared Map

Incident # (ID-IPF-000212)



Infrared Map: 08/17/2022  
Imagery Date: 08/16/2022  
Imagery Time: 2142 PDT  
Interpreted Acres: 476 Acres

Sources: Esri, Airbus DS, USGS, NGA, NASA, CGIAR, N Robinson, NCEAS, NLS, OS, NMA, Geodatastyrelsen, Rijkswaterstaat, GSA, Geoland, FEMA, Intermap and the GIS user community, WA State Parks GIS, Esri, HERE, Garmin, SafeGraph, GeoTechnologies, Inc, METI/NASA, USGS, Bureau of Land Management, EPA, NPS, US Census Bureau, USDA

N  
W E  
S

GCS WGS 1984  
Scale: 1:24,000

0 1 2 Miles

- IR Heat Perimeter
- IR Intense Heat
- IR Scattered Heat

Infrared Interrupter: Daniel LeVrier  
email: daniel.levrier@usda.gov