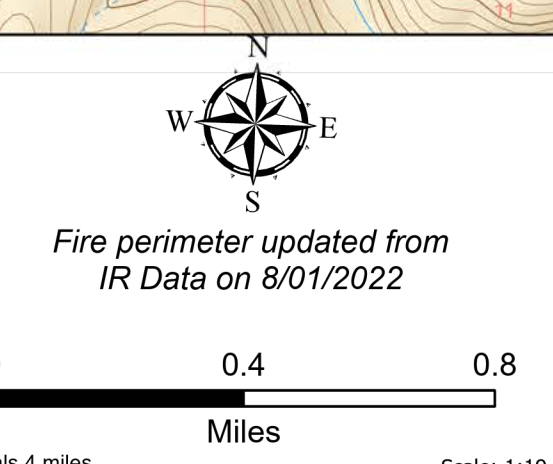


Division B

Elmo
MTFHA-000106
12,975 acres

08/02/2022

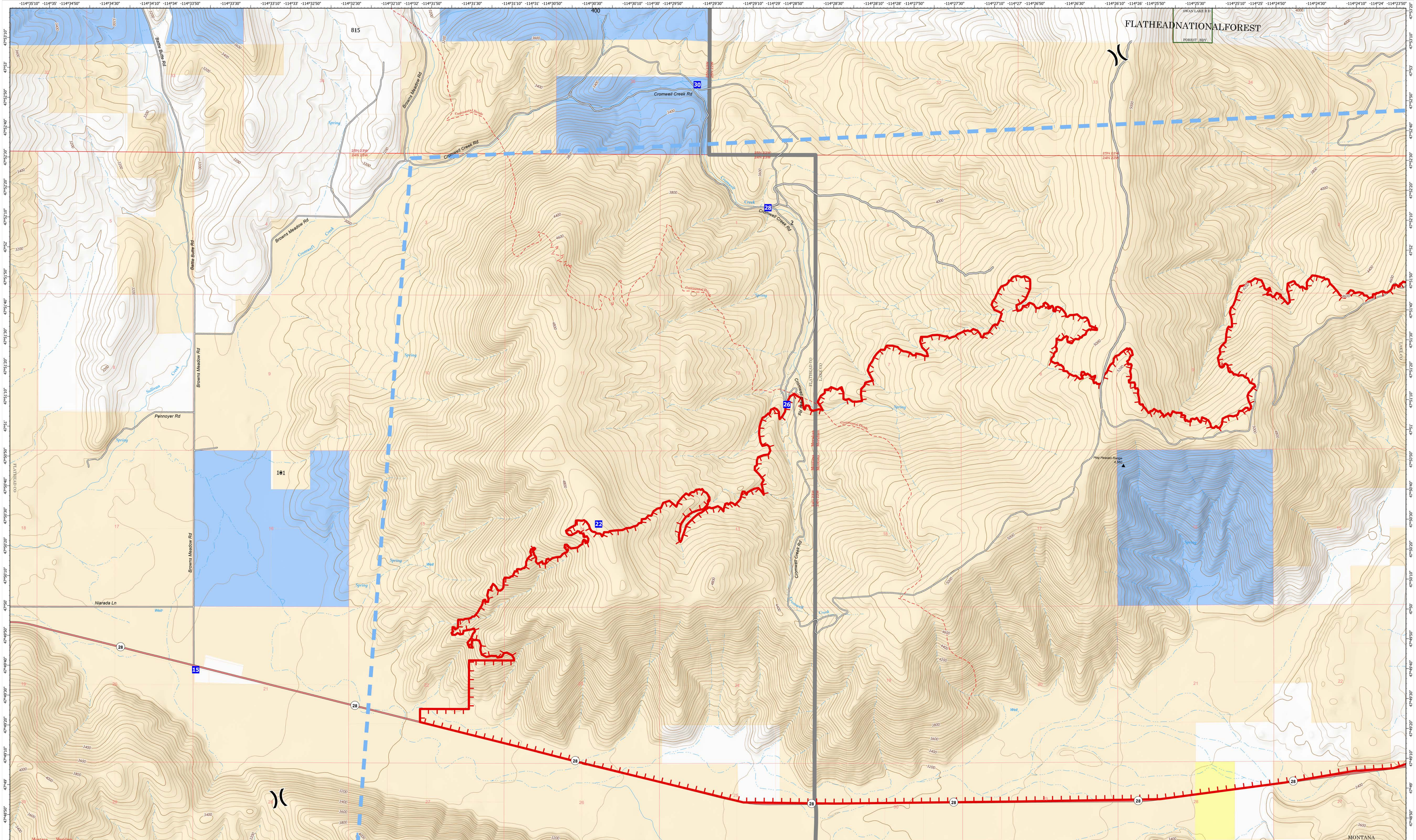


- Division Break
- Incident Command Post
- Drop Point
- Access or Improved Road
- Temporary Flight Restriction
- Uncontained
- US Primary Route
- State Primary Route
- Paved Roads
- Dirt (Not Paved)
- National Designated Trail
- Summit; Gap
- Reservation Boundary
- State Boundary
- County Boundary
- Individual Trust
- Tribal
- Montana State Trust Lands
- ElmoMT Structures



NR Remote Incident Support
8/1/2022 1549
North American 1983 Datum.
Lat/Long Grid

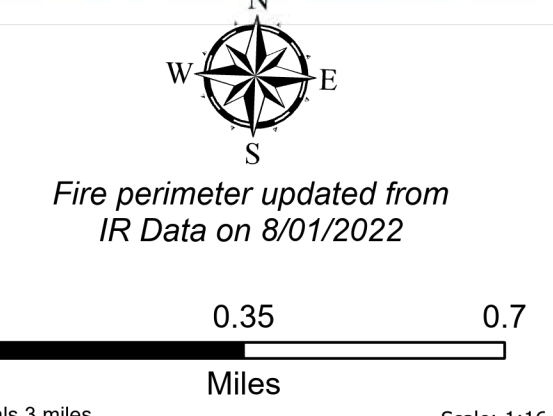
Divisions



FLATHEAD NATIONAL FOREST
SWAN LAKE R.D.
FOREST RD.

Division F

Elmo
MTFHA-000106
12,975 acres
08/02/2022



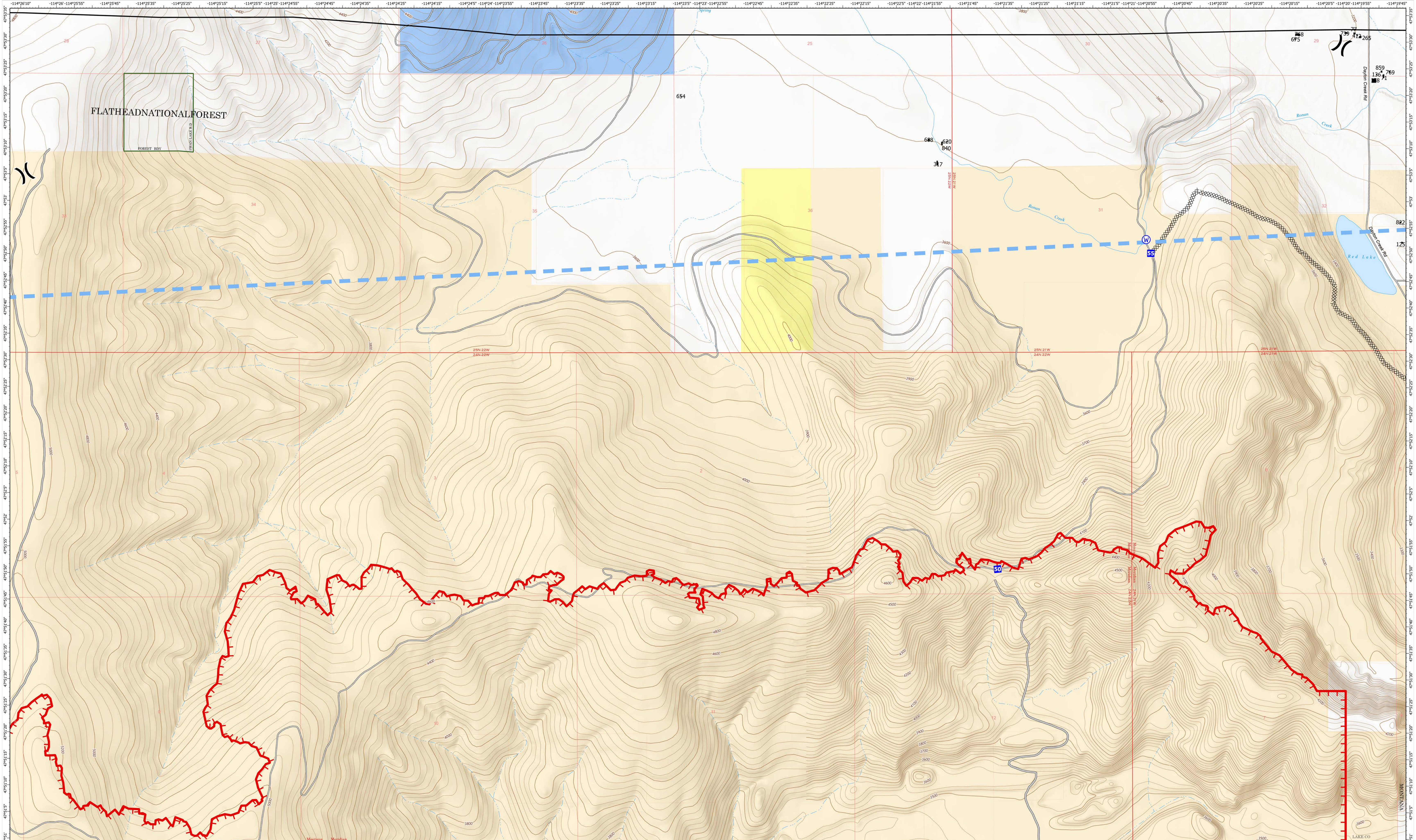
Fire perimeter updated from
IR Data on 8/01/2022

- Division Break
- Drop Point
- Access or Improved Road
- Temporary Flight Restriction
- Uncontained
- State Primary Route
- Dirt (Not Paved)
- National Designated Trail
- Summit; Gap
- Reservation Boundary
- State Boundary
- County Boundary
- Individual Trust
- Tribal
- Montana State Trust Lands
- ElmoMTStructures



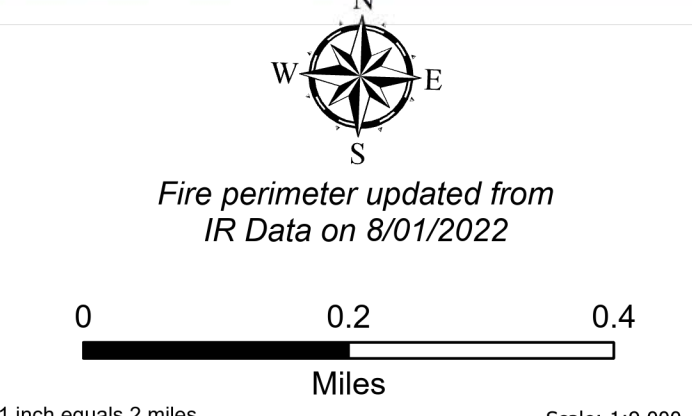
NR Remote Incident Support
8/1/2022 1550
North American 1983 Datum.
Lat/Long Grid

Divisions



FLATHEAD NATIONAL FOREST

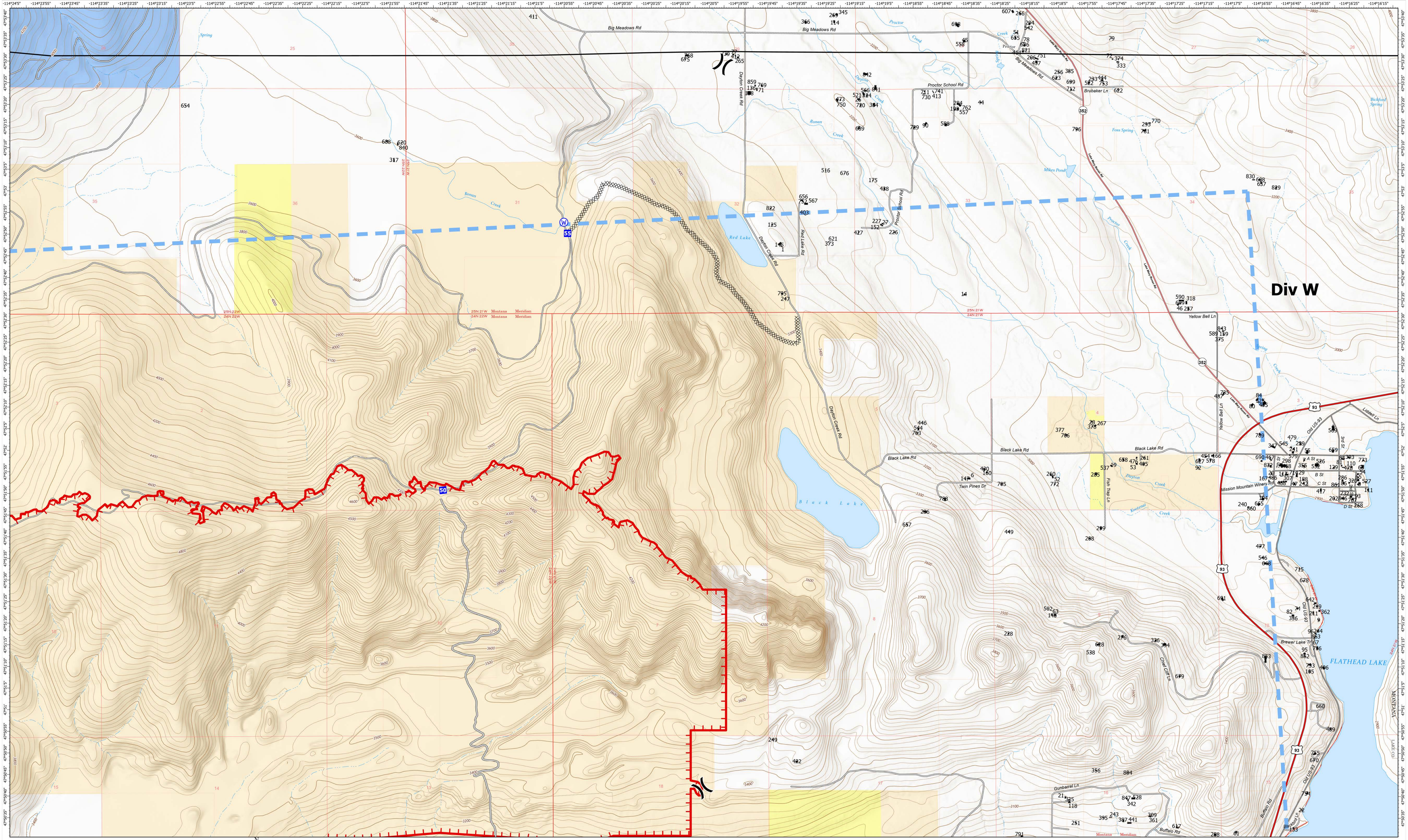
Division O
 Elmo
 MTFHA-000106
 12,975 acres
 08/02/2022



- | | | | |
|------------------------|--------------------------------|------------------------|-----------------------------|
|)(Division Break | — Access or Improved Road | □ Reservation Boundary | ■ Tribal |
| ■ Drop Point | ■ Temporary Flight Restriction | ▬ State Boundary | ■ Montana State Trust Lands |
| W Water Source | ■ Uncontained | ■ County Boundary | ■ Elmo MT Structures |
| × Completed Dozer Line | ⋈ Dirt (Not Paved) | ■ Individual Trust | |

NR Remote Incident Support
 8/1/2022 1551
 North American 1983 Datum.
 Lat/Long Grid

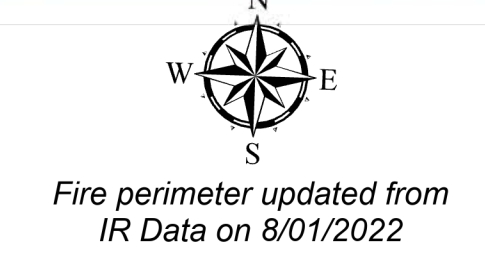
Divisions



Div W

Elmo
MTFHA-000106
12,975 acres

08/02/2022



Fire perimeter updated from
IR Data on 8/01/2022

- | | | | | |
|------------------------|--------------------------------|-------------------------|------------------------------|-----------------------------|
| ⎓ Division Break | — Access or Improved Road | ⌘ Paved Roads | ⎓ State Boundary | ▨ Tribal |
| ■ Drop Point | — Temporary Flight Restriction | ⌘ Dirt (Not Paved) | ⎓ County Boundary | ▨ Montana State Trust Lands |
| ⊕ Water Source | ⎓ Uncontained | ⌘ State Secondary Route | ⎓ GNIS Populated Places Some | ■ ElmoMTStructures |
| ⊗ Completed Dozer Line | ⎓ US Primary Route | ⎓ Reservation Boundary | ▨ Individual Trust | |



NR Remote Incident Support
8/1/2022 1552
North American 1983 Datum.
Lat/Long Grid

Divisions