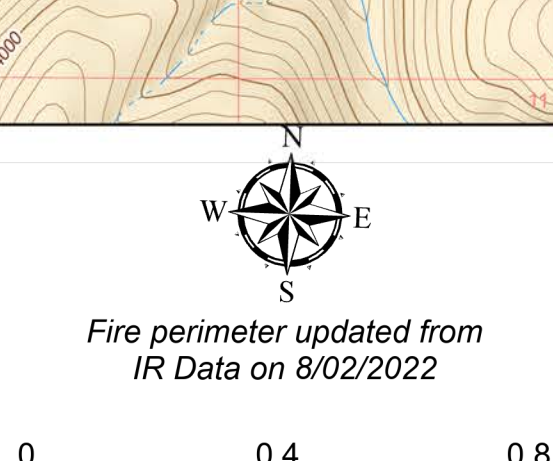


Division B

Elmo
MTFHA-000106
16,226 acres

8/2/2022

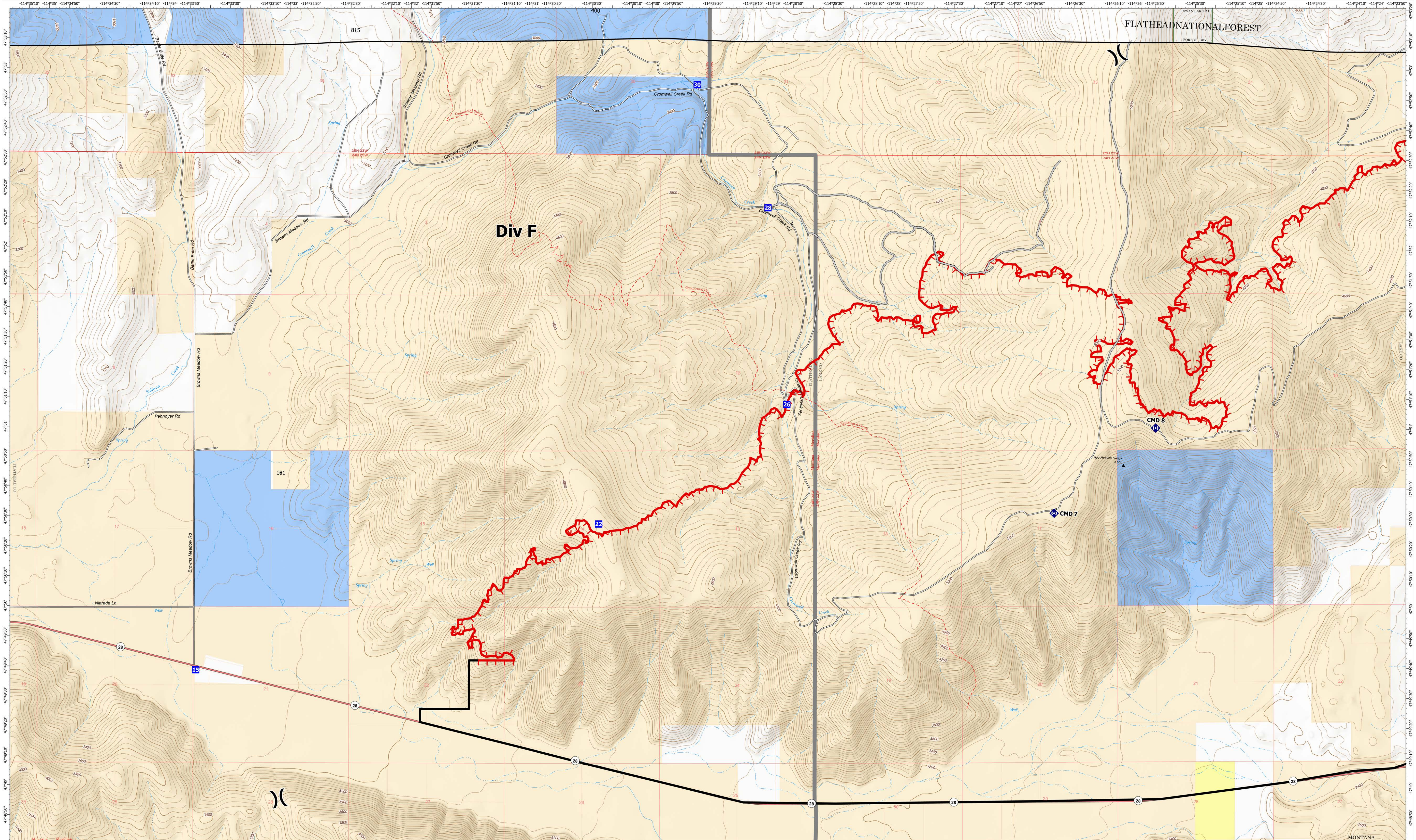


Fire perimeter updated from
IR Data on 8/02/2022

- | | | | |
|---------------------------|-----------------------|--------------------|-----------------------------|
|)(Division Break | — Contained | ▲ Summit; Gap | ■ Montana State Trust Lands |
| ■ Incident Command Post | — Uncontained | ▲ State Boundary | ■ ElmoMTStructures |
| ■ Drop Point | — US Primary Route | ■ County Boundary | □ CSKT_Reservation_Boundary |
| ■ Repeater | — State Primary Route | ■ Individual Trust | |
| — Access or Improved Road | — Paved Roads | ■ Tribal | |
| | — Dirt (Not Paved) | | |

Northern Rockies
Incident Management
Team

QR Code

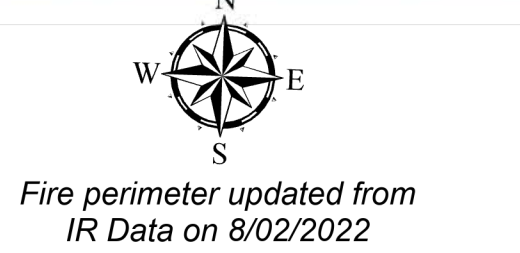


Div F

Division F

Elmo
MTFHA-000106
16,226 acres

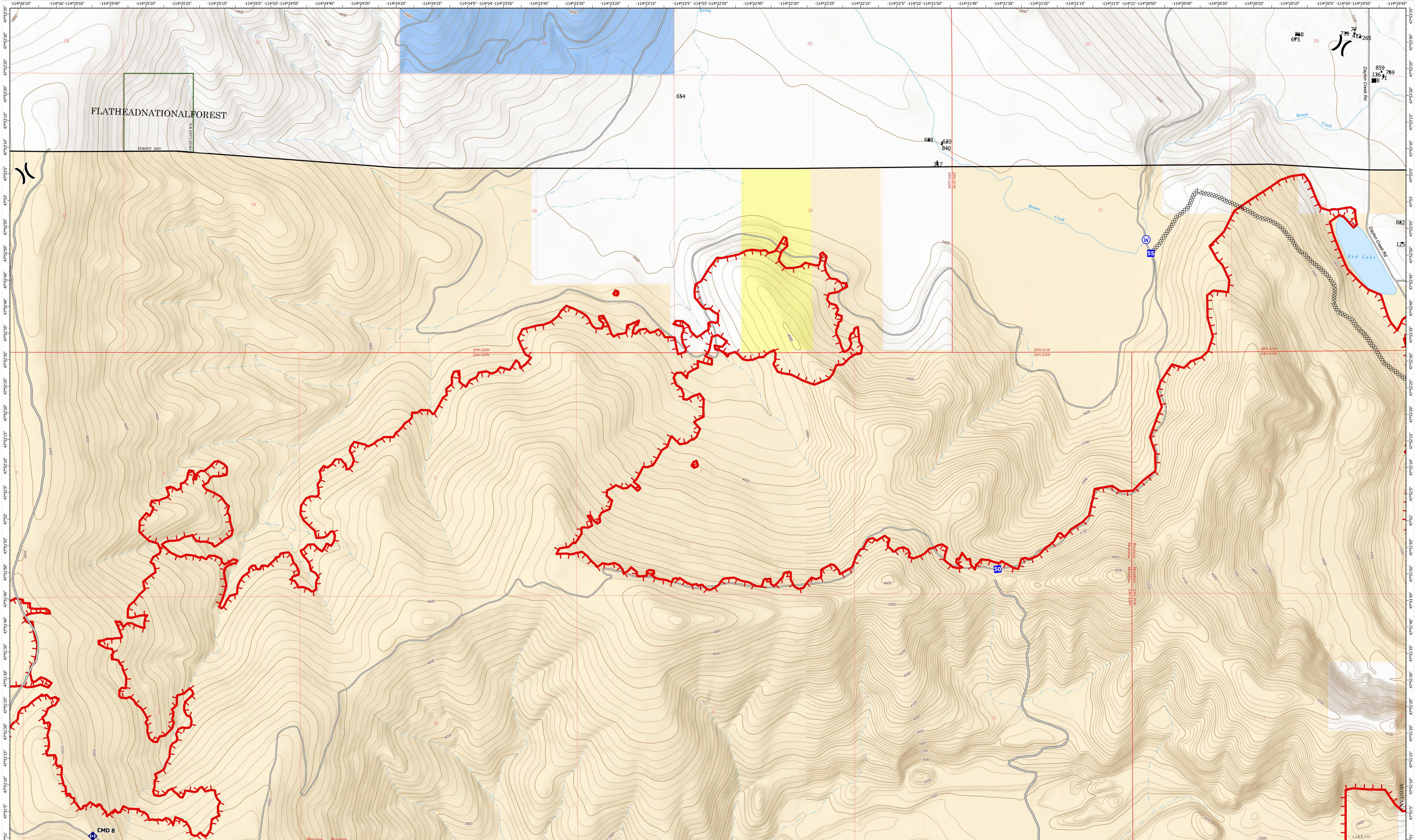
8/2/2022



Fire perimeter updated from
IR Data on 8/02/2022

- () Division Break
- Contained
- ▲ Summit; Gap
- Montana State Trust Lands
- Drop Point
- Uncontained
- ⚡ State Boundary
- ⚡ Repeater
- ⚡ State Primary Route
- ⚡ County Boundary
- ⚡ Access or Improved Road
- ⚡ Dirt (Not Paved)
- ⚡ Individual Trust
- ⚡ National Designated Trail
- ⚡ Tribal
- ⚡ ElmoMT Structures
- ⚡ CSKT_Reservation_Boundary

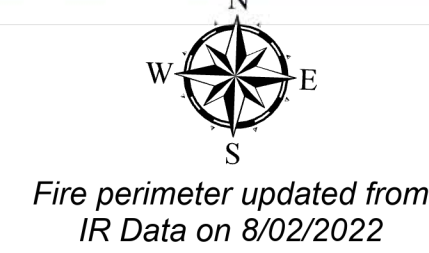




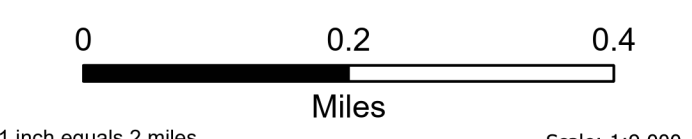
Division O

Elmo
MTFHA-000106
16,226 acres

8/2/2022



Fire perimeter updated from
IR Data on 8/02/2022

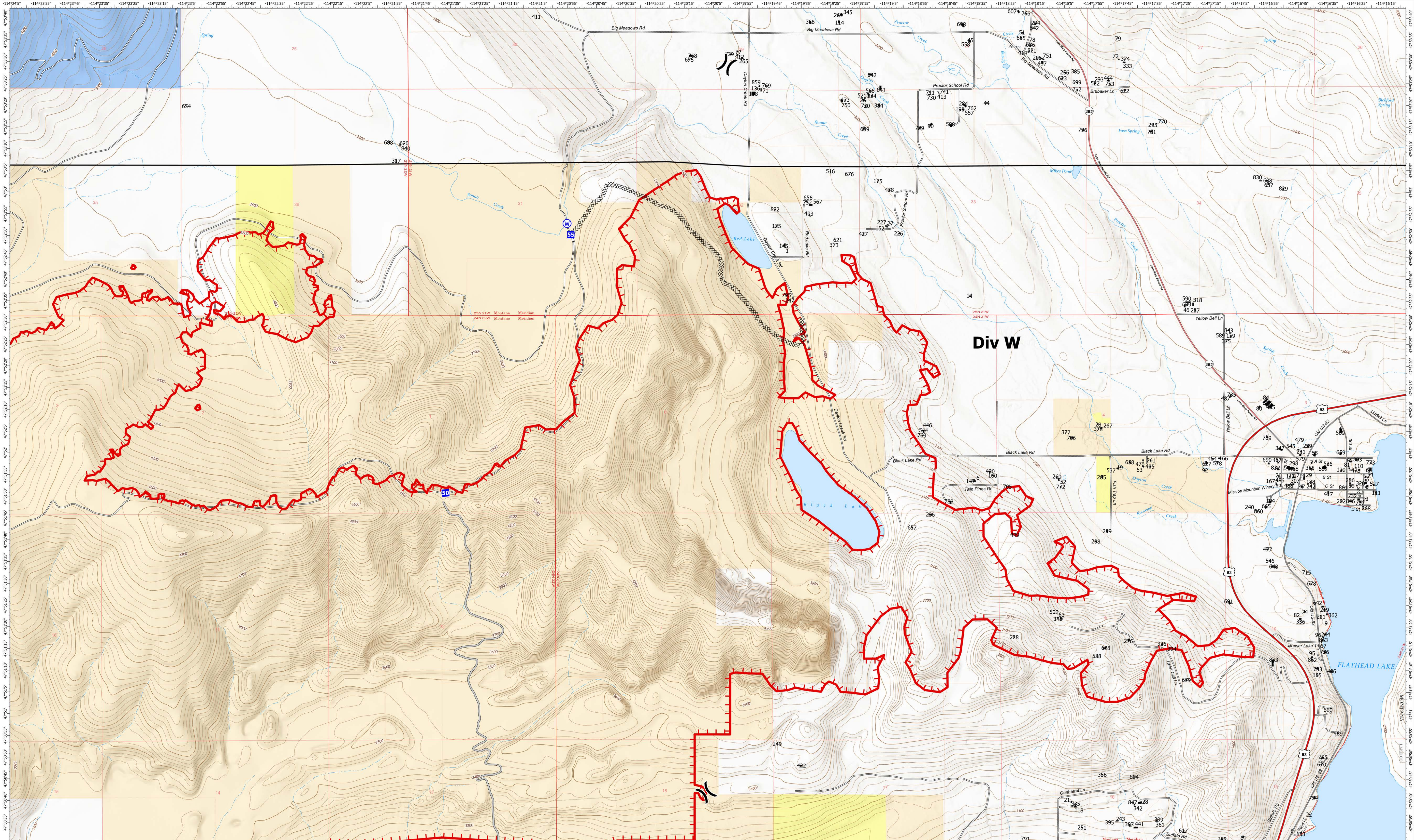


- () Division Break
- Drop Point
- Ⓜ Repeater
- Ⓜ Water Source
- ⊗ Completed Dozer Line
- Access or Improved Road
- Ⓜ Uncontained
- Ⓜ Dirt (Not Paved)
- Ⓜ State Boundary
- Ⓜ County Boundary
- Individual Trust
- Tribal
- Montana State Trust Lands
- ElmoMTStructures
- CSKT_Reservation_Boundary



NR Remote Incident Support
8/2/2022 0642
North American 1983 Datum.
Lat/Long Grid

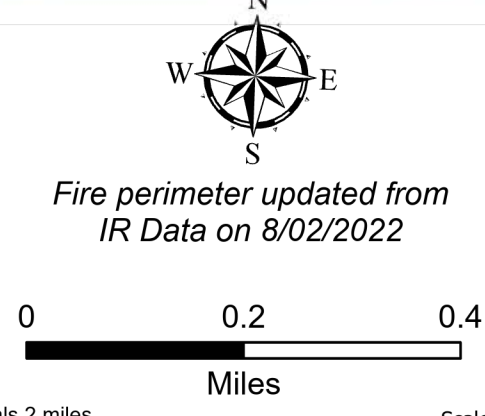
Divisions



Division W

Elmo
MTFHA-000106
16,226 acres

8/2/2022



- | | | | |
|------------------------|---------------------------|------------------------------|-----------------------------|
|)(Division Break | = Access or Improved Road | ↘ State Secondary Route | ■ Tribal |
| ■ Drop Point | ▭ Uncontained | ▭ State Boundary | ■ Montana State Trust Lands |
| ⊙ Water Source | ▭ US Primary Route | ▭ County Boundary | ■ ElmoMTStructures |
| ⊗ Completed Dozer Line | ▭ Paved Roads | ▭ GNIS Populated Places Some | □ CSKT_Reservation_Boundary |
| | ▭ Dirt (Not Paved) | ▭ Individual Trust | |



NR Remote Incident Support
8/2/2022 0643
North American 1983 Datum.
Lat,Long Grid

Divisions