

**Public Information**

Elmo  
MTFHA-000106  
18427 acres

8/3/2022



Fire perimeter updated from  
IR Data on 8/03/2022



- ✕ Division Break
- Incident Command Post
- Contained
- ▭ Wildfire Daily Fire Perimeter
- ⚡ Powerlines
- ▭ Reservation Boundary

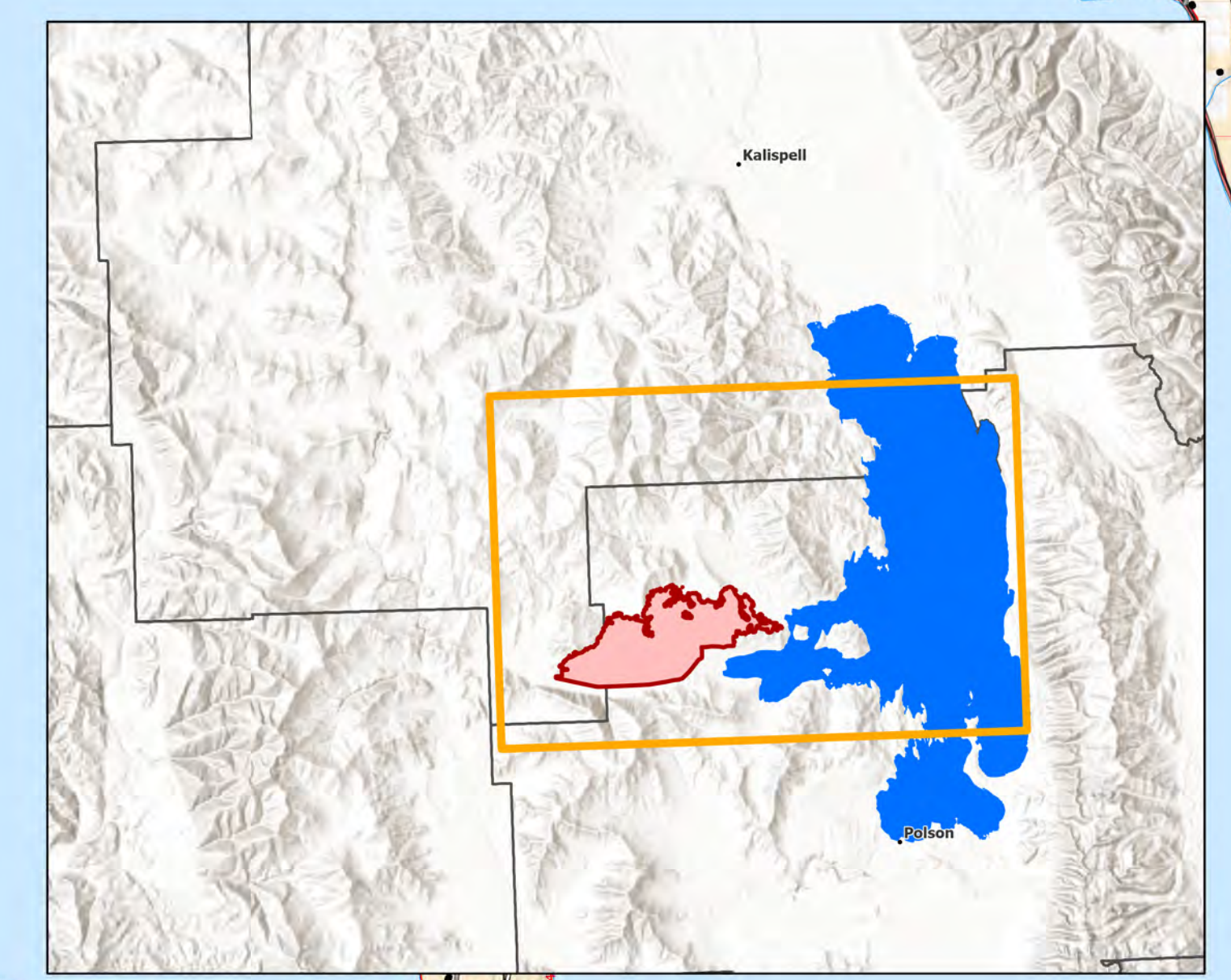
- Montana Structures
- ▲ Summit; Gap
- CSKT Roads
- ~ US Primary Route
- ~ State Primary Route
- ~ State Secondary Route

- ~ Paved
- ~ Gravel Road
- ~ Dirt Road
- ~ Unimproved Road
- ~ Forest Service Roads Closed
- ~ Paved Roads

- ~ Dirt (Not Paved)
- - State Boundary
- - County Boundary
- ~ Lake / Pond
- ~ Lake / Pond (Intermittent)
- ~ Stream/River; Artificial Path

- ~ Stream/River Intermittent
- ▭ Township
- ▭ Section
- ▭ World Hillshade
- ▭ Parcels
- ▭ Montana Fish, Wildlife, and Parks

- ▭ Montana State Trust Lands
- ▭ US Forest Service
- ▭ Individual Trust
- ▭ Tribal
- Cities and Towns



North American 1983 Datum.  
Lat/Long Grid

Public Information