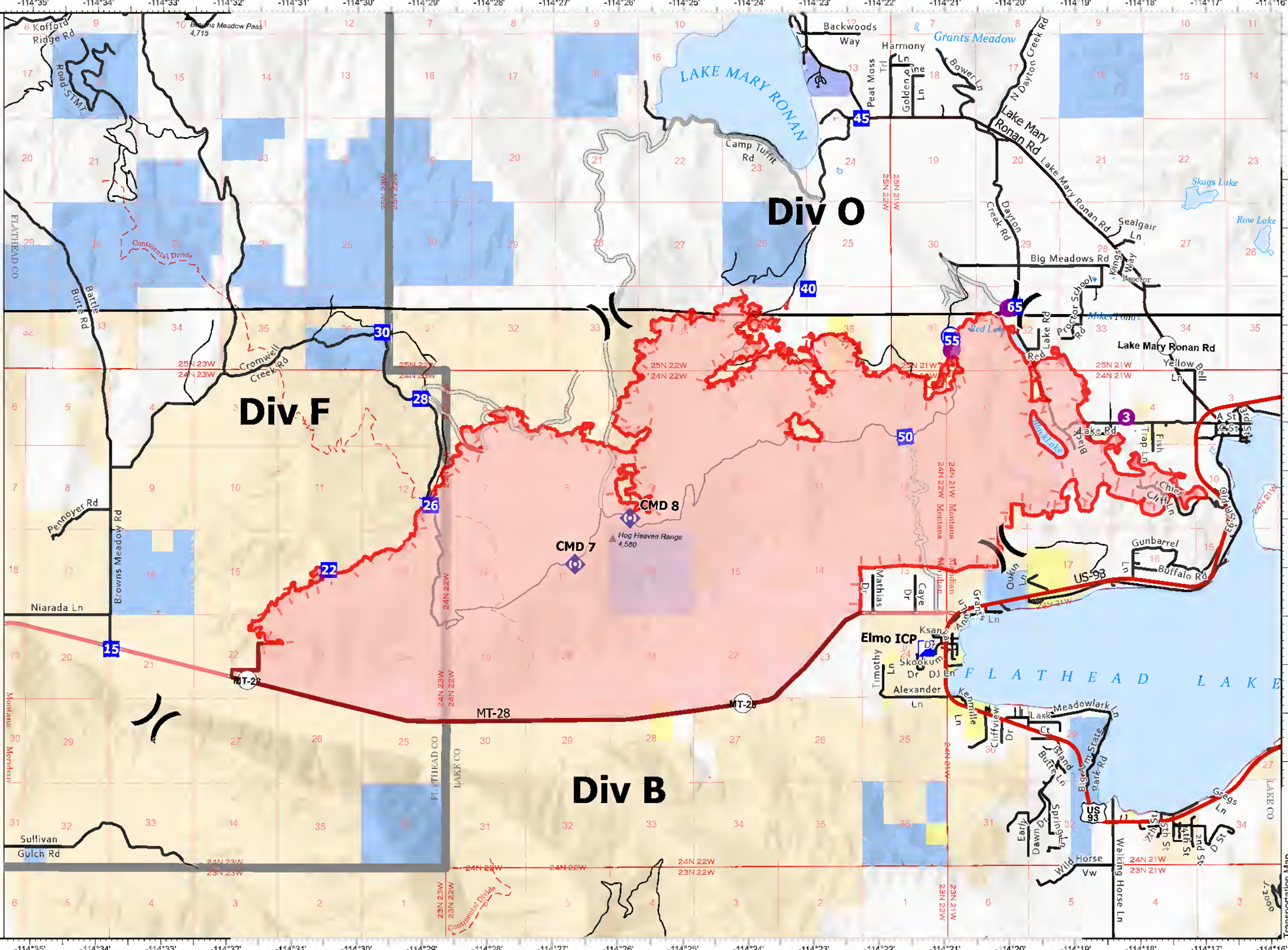


Transportation Map

Elmo
MTFHA-000106
18427 acres
8/3/2022

- Wildfire Daily Fire Perimeter
- Label Point
- Helispot
- Division Break
- Incident Command Post
- Drop Point
- Repeater
- Water Source
- Access or Improved Road
- Contained
- Uncontained
- Wildfire Daily Fire Perimeter
- CSKT_Reservation_Boundary
- Summit; Gap
- National Designated Trail
- US Primary Route
- State Primary Route
- <all other values>
- State Secondary Route
- Paved Roads
- Dirt (Not Paved)
- County Boundary
- Lake / Pond
- Lake / Pond (Intermittent)
- Township
- Section
- Montana Fish, Wildlife, and Parks
- Montana State Trust Lands
- Individual Trust
- Tribal



0 0.9 1.8
Miles
Scale: 1:65,284

Fire perimeter updated from
IR Data on 8/3/2022

8/3/2022 11:46
North American 1983
Datum: UTM, UTM Zone 12N
Datum: UTM, UTM Zone 12N