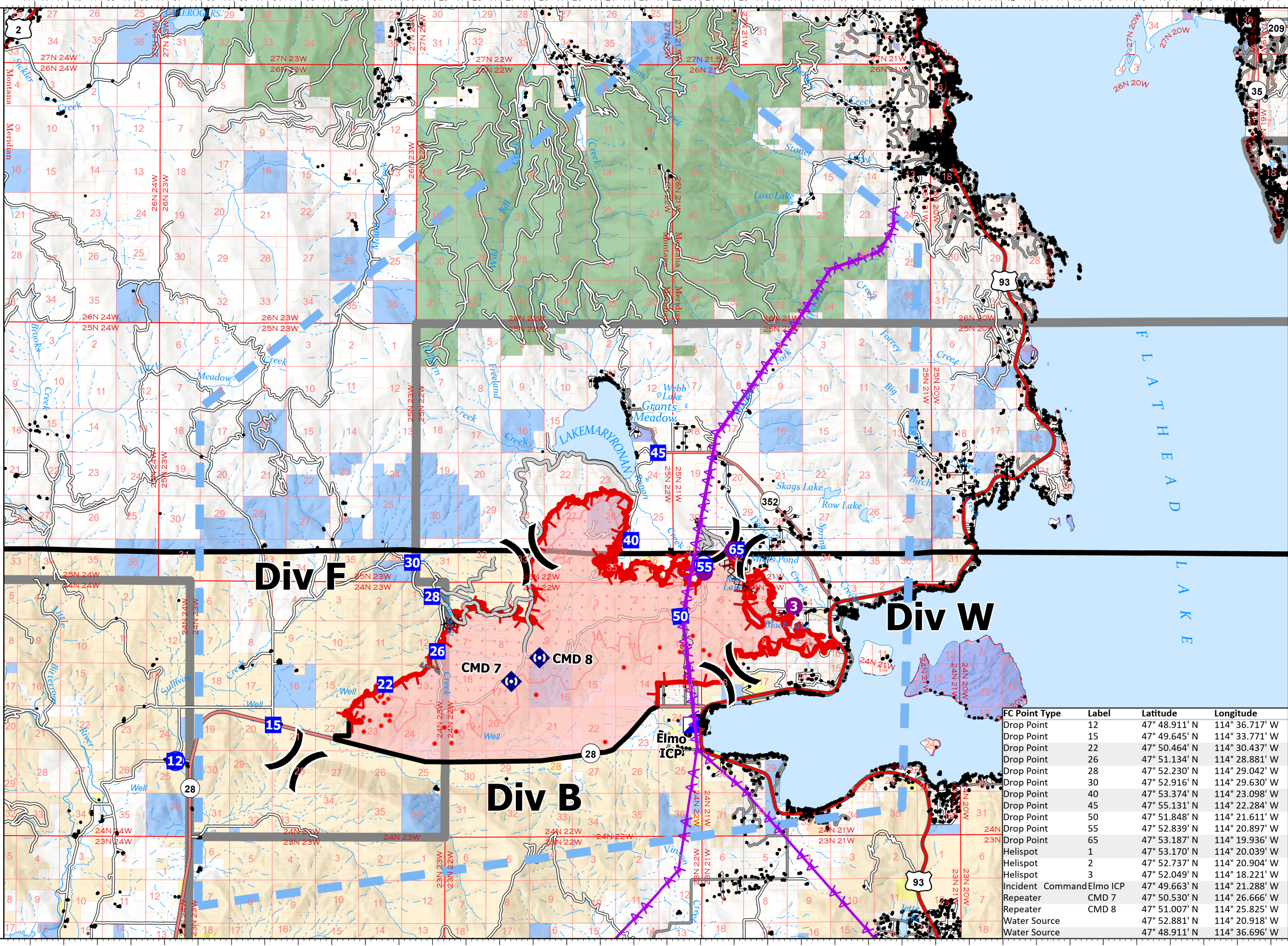


# Air Operations

Elmo  
8/03/2022 @2211  
20616 acres  
8/4/2022

- ▲ Powerlines
- Label Point
- Helispot
- ) Division Break
- ▣ Incident Command Post
- ▣ Drop Point
- ⬢ Repeater
- ⊙ Water Source
- IR Isolated Heat Source
- ⊗ Completed Dozer Line
- Access or Improved Road
- Other
- ▣ Temporary Flight Restriction
- ▣ Contained
- ▣ Uncontained
- ▣ Wildfire Daily Fire Perimeter
- ▣ IR Heat Perimeter
- ▣ IR Intense Heat
- ▣ IR Scattered Heat
- ▣ CSKT\_Reservation\_Boundary
- ▣ Parcels



FC Point Type	Label	Latitude	Longitude
Drop Point	12	47° 48.911' N	114° 36.717' W
Drop Point	15	47° 49.645' N	114° 33.771' W
Drop Point	22	47° 50.464' N	114° 30.437' W
Drop Point	26	47° 51.134' N	114° 28.881' W
Drop Point	28	47° 52.230' N	114° 29.042' W
Drop Point	30	47° 52.916' N	114° 29.630' W
Drop Point	40	47° 53.374' N	114° 23.098' W
Drop Point	45	47° 55.131' N	114° 22.284' W
Drop Point	50	47° 51.848' N	114° 21.611' W
Drop Point	55	47° 52.839' N	114° 20.897' W
Drop Point	65	47° 53.187' N	114° 19.936' W
Helispot	1	47° 53.170' N	114° 20.039' W
Helispot	2	47° 52.737' N	114° 20.904' W
Helispot	3	47° 52.049' N	114° 18.221' W
Incident Command Post	Elmo ICP	47° 49.663' N	114° 21.288' W
Repeater	CMD 7	47° 50.530' N	114° 26.666' W
Repeater	CMD 8	47° 51.007' N	114° 25.825' W
Water Source		47° 52.881' N	114° 20.918' W
Water Source		47° 48.911' N	114° 36.696' W

0 1.5 3  
Miles  
Scale: 1:130,000  
1 inch equals 25 miles

Fire perimeter updated from IR Data on 8/03/2022 @2211

N  
W E  
S

8/4/2022 0602  
North American 1983  
Datum: LattLong Grid

-114°41' -114°40' -114°39' -114°38' -114°37' -114°36' -114°35' -114°34' -114°33' -114°32' -114°31' -114°30' -114°29' -114°28' -114°27' -114°26' -114°25' -114°24' -114°23' -114°22' -114°21' -114°20' -114°19' -114°18' -114°17' -114°16' -114°15' -114°14' -114°13' -114°12' -114°11' -114°10' -114°9' -114°8' -114°7' -114°6' -114°5' -114°4'

Air Operations