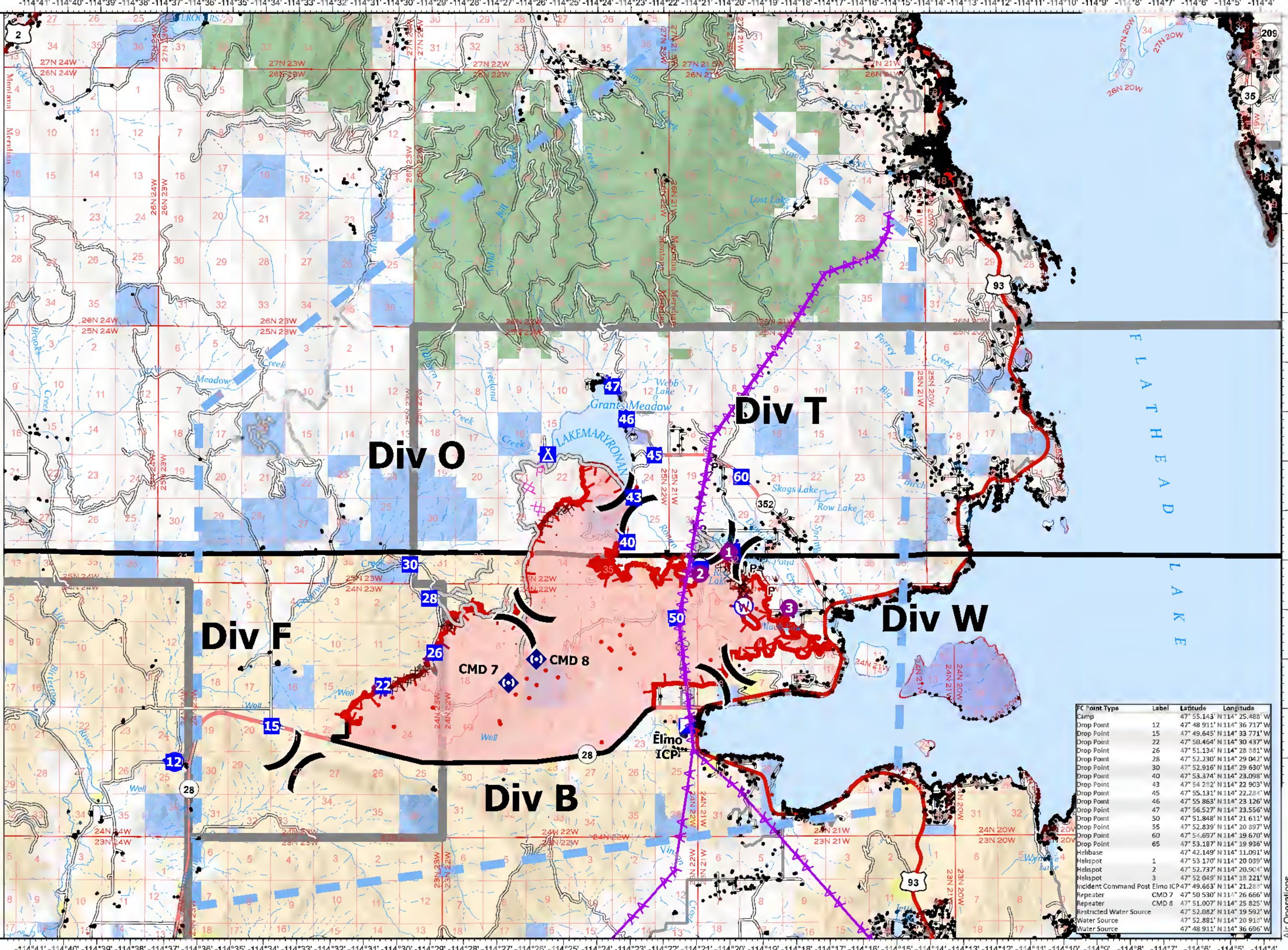


Air Operations

Elmo
08/04/2022 @2331
21,182 acres
8/5/2022

- ▲ Powerlines
- Label Point
- Helispot
-) Division Break
- ▣ Incident Command Post
- Drop Point
- ⛑ Camp
- Ⓜ Repeater
- Ⓜ Water Source
- Ⓜ Restricted Water Source
- IR Isolated Heat Source
- ⊗ Completed Dozer Line
- Completed Plow Line
- Planned Dozer Line
- Access or Improved Road
- Other
- ▭ Temporary Flight Restriction
- ▭ Contained
- ▭ Uncontained
- ▭ Wildfire Daily Fire Perimeter
- ▭ IR Heat Perimeter
- ▭ IR Intense Heat
- ▭ IR Scattered Heat
- ▭ CSKT_Reservation_Boundary
- ▭ Parcels



FC Point Type	Label	Latitude	Longitude
Camp		47° 55.143' N 114° 25.488' W	
Drop Point	12	47° 48.911' N 114° 36.717' W	
Drop Point	15	47° 49.645' N 114° 33.771' W	
Drop Point	22	47° 50.464' N 114° 30.437' W	
Drop Point	26	47° 51.134' N 114° 28.881' W	
Drop Point	28	47° 52.230' N 114° 29.042' W	
Drop Point	30	47° 52.916' N 114° 29.630' W	
Drop Point	40	47° 53.374' N 114° 23.098' W	
Drop Point	43	47° 54.282' N 114° 22.903' W	
Drop Point	45	47° 55.131' N 114° 22.284' W	
Drop Point	46	47° 55.863' N 114° 23.126' W	
Drop Point	47	47° 56.527' N 114° 23.556' W	
Drop Point	50	47° 51.848' N 114° 21.611' W	
Drop Point	55	47° 52.839' N 114° 20.897' W	
Drop Point	60	47° 54.697' N 114° 19.670' W	
Drop Point	65	47° 53.187' N 114° 19.936' W	
Helibase		47° 42.149' N 114° 11.091' W	
Helispot	1	47° 53.170' N 114° 20.039' W	
Helispot	2	47° 52.737' N 114° 20.904' W	
Helispot	3	47° 52.049' N 114° 18.221' W	
Incident Command Post	Elmo ICP	47° 49.663' N 114° 21.288' W	
Repeater	CMD 7	47° 50.530' N 114° 26.666' W	
Repeater	CMD 8	47° 51.007' N 114° 25.825' W	
Restricted Water Source		47° 52.082' N 114° 19.592' W	
Water Source		47° 52.881' N 114° 20.911' W	
Water Source		47° 48.911' N 114° 36.696' W	

Fire perimeter updated from IR Data on 08/04/2022 @2331

0 1.5 3 Miles

Scale: 1:37,000

Northern Rockies Incident Management Team

8/5/2022 0542
North American 1983
Datum: UTM Long GCS