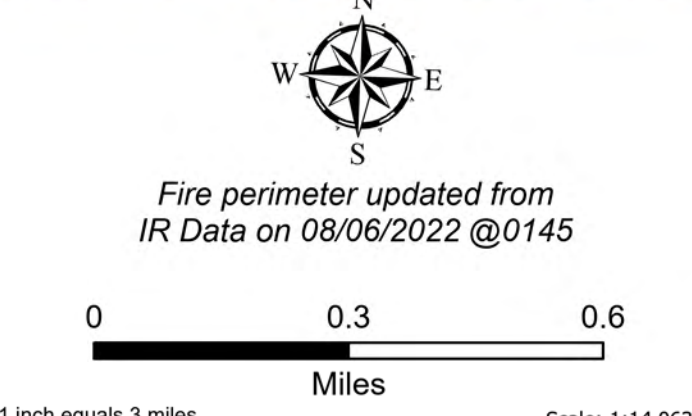
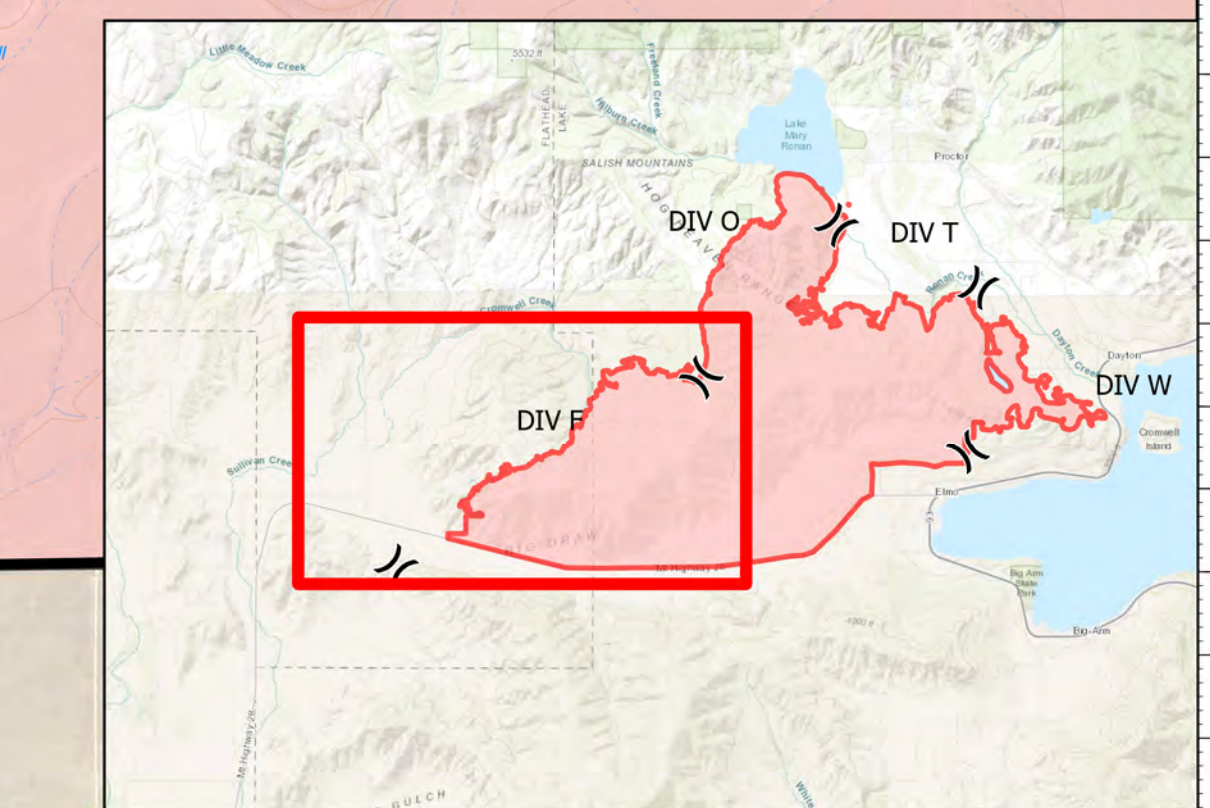


DIV F

Elmo
MTFHA-000106
21327 acres
08/08/2022



- | | | | | |
|----------------------|-------------------------|-------------------------------|---------------------------|---------------------------|
| Montana Structures | Completed Hand Line | Uncontained | Dirt (Not Paved) | County Boundary |
| Division Break | Completed Road as Line | Pump | National Designated Trail | Individual Trust |
| Drop Point | Access or Improved Road | Water Tank | Summit; Gap | Tribal |
| Repeater | Other | Wildfire Daily Fire Perimeter | Reservation Boundary | Montana State Trust Lands |
| Completed Dozer Line | Contained | State Primary Route | State Boundary | |



Northern Rockies
Incident Management
Team

8/7/2022 0530
North American 1983 Datum.
Lat/Long Grid

DIVISIONS