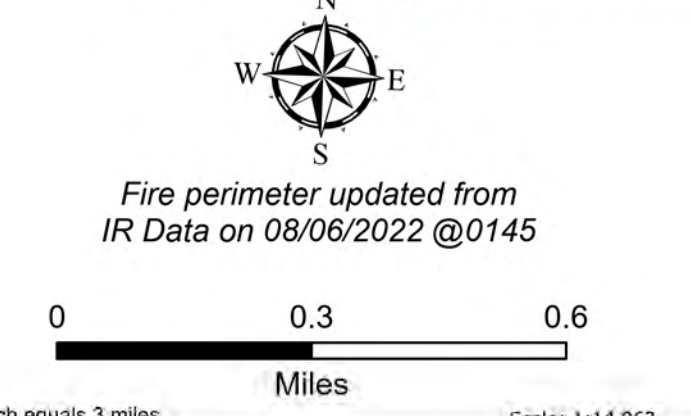
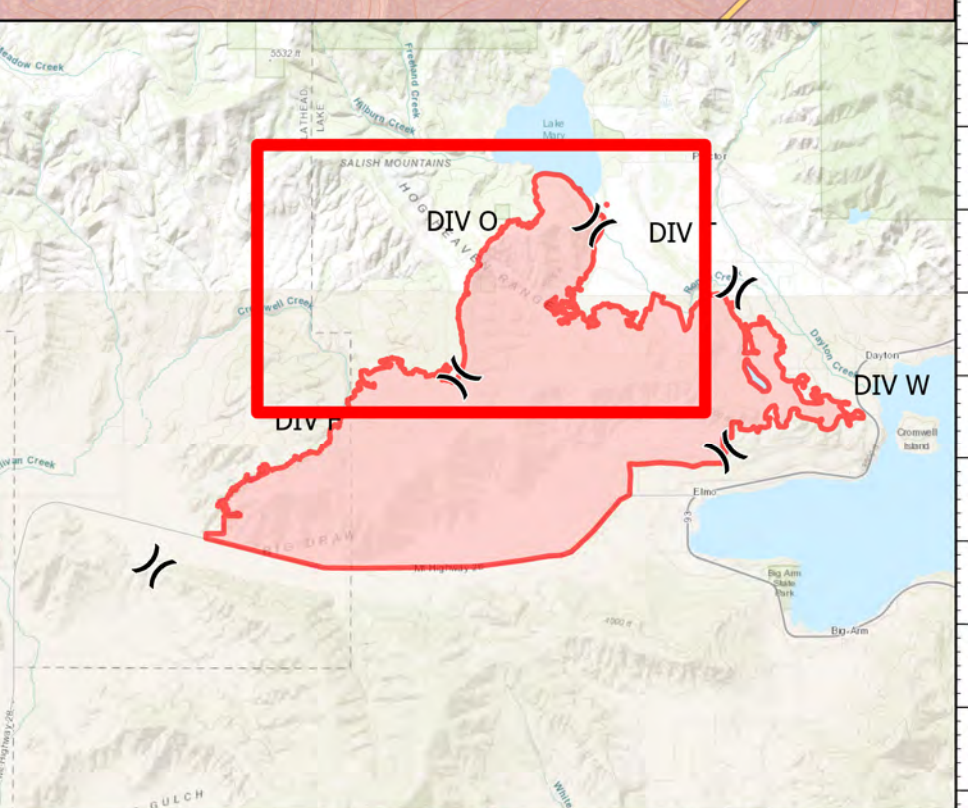


**DIV O**  
 Elmo  
 MTFHA-000106  
 21327 acres  
 08/08/2022



- |                      |                          |                                 |                             |                                     |
|----------------------|--------------------------|---------------------------------|-----------------------------|-------------------------------------|
| ■ Montana Structures | ◆ Repeater               | ✂ Planned Dozer Line            | 🛣 Paved Roads               | 🏠 County Boundary                   |
| ● Helispot           | 📍 Water Source           | — Access or Improved Road       | 🛣 Dirt (Not Paved)          | 🏠 Individual Trust                  |
| ⌘ Division Break     | ⌘ Completed Dozer Line   | — Uncontained                   | 🛣 State Secondary Route     | 🏠 Tribal                            |
| 📍 Drop Point         | ⌘ Completed Hand Line    | 📍 Pump                          | 🛣 National Designated Trail | 🏠 Montana Fish, Wildlife, and Parks |
| 📍 Camp               | — Completed Plow Line    | 📍 Water Tank                    | 🛣 Reservation Boundary      | 🏠 Montana State Trust Lands         |
| 📍 Dozer Push         | — Completed Road as Line | 📍 Wildfire Daily Fire Perimeter | 🛣 State Boundary            |                                     |



**Northern Rockies Incident Management Team**

8/7/2022 0502  
 North American 1983 Datum.  
 Lat/Long Grid

DIVISIONS