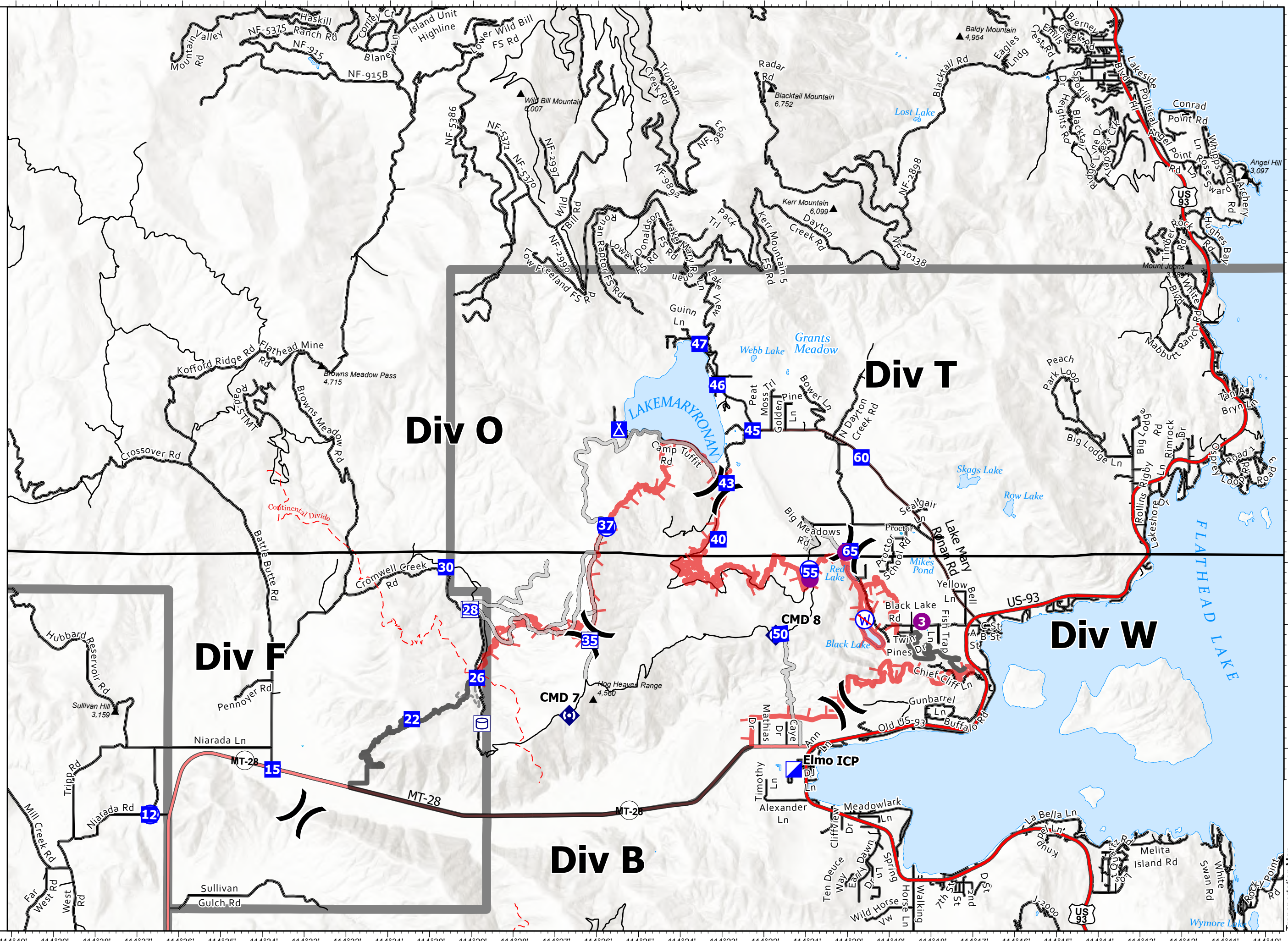


# Transportation Map

Elmo  
MTFHA-000106  
21327 acres  
8/7/2022

- Label Point
- ☐ Pump
- ☐ Water Tank
- Helispot
- ) Division Break
- ▣ Incident Command Post
- ▣ Drop Point
- ▣ Camp
- ▣ Dozer Push
- ▣ Repeater
- ⊙ Water Source
- ⊙ Restricted Water Source
- Access or Improved Road
- - - Other
- ▬ Contained
- ▬ Uncontained
- ▬ CSKT\_Reservation\_Boundary
- ▲ Summit; Gap
- - - National Designated Trail
- US Primary Route
- State Primary Route
- <all other values>
- State Secondary Route
- Paved Roads
- Dirt (Not Paved)
- ▬ County Boundary
- Lake / Pond
- Lake / Pond (Intermittent)



8/7/2022 0437  
North American 1983  
Datum, Lat,Long Grid

Fire perimeter updated from  
IR Data on 08/06/2022 @0145

0 1 2  
Miles  
Scale: 1:103,585