

Public Information

Elmo
MTFHA-000106
21,345 acres

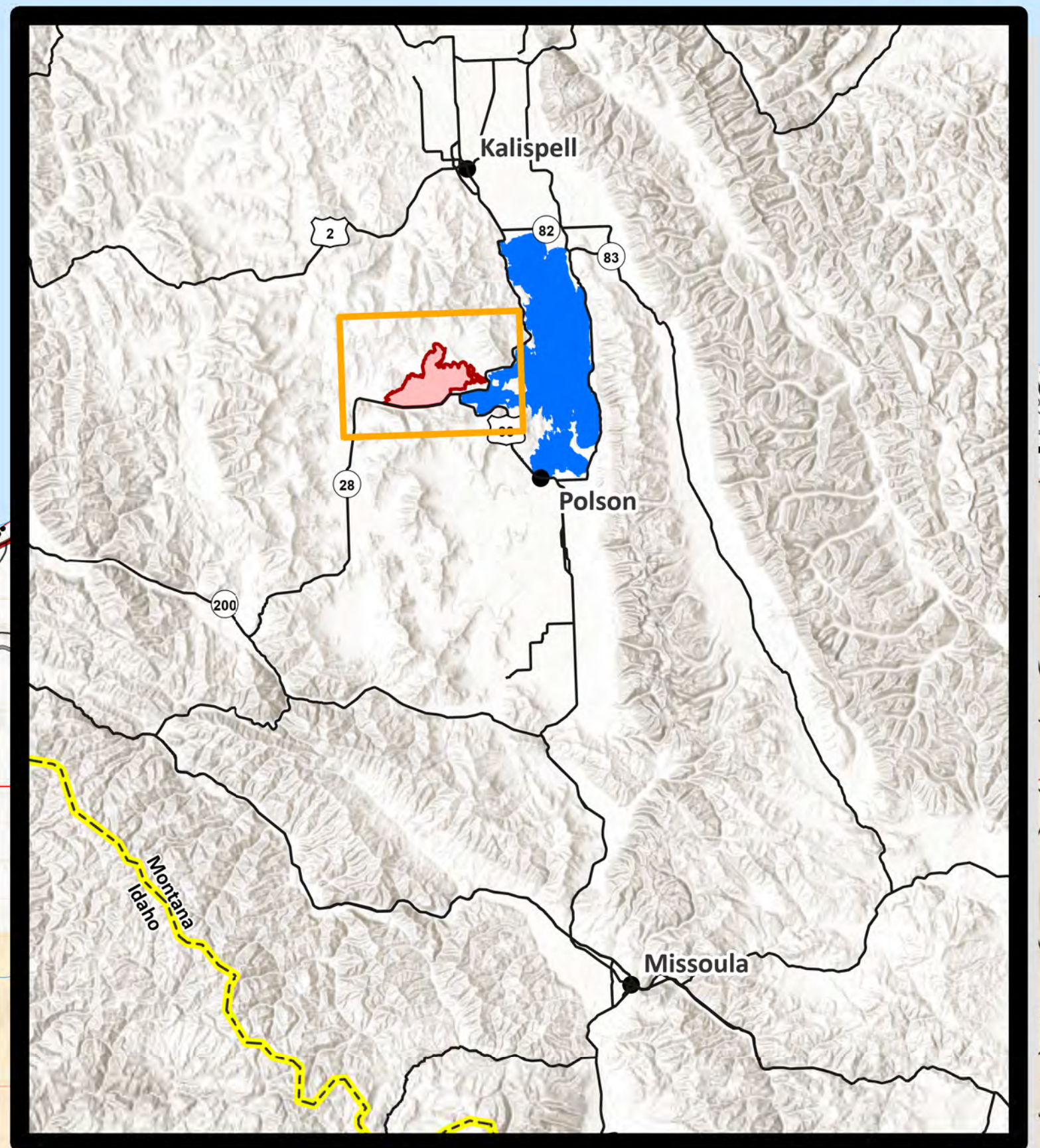
8/8/2022



Fire perimeter updated from
IR Data on 08/08/2022 @0215



- ✕ Division Break
- Incident Command Post
- ▭ Contained
- ▭ Wildfire Daily Fire Perimeter
- ⚡ Powerlines
- ▭ Reservation Boundary
- ▭ Montana Structures
- ▲ Summit; Gap
- CSKT Roads
- ~ US Primary Route
- ~ State Primary Route
- ~ State Secondary Route
- ~ Gravel Road
- ~ Dirt Road
- ~ Unimproved Road
- ~ Forest Service Roads Closed
- ~ Paved Roads
- ~ Dirt (Not Paved)
- - - State Boundary
- ▭ County Boundary
- Lake / Pond
- Lake / Pond (Intermittent)
- Stream/River; Artificial Path
- Stream/River Intermittent
- ▭ Township
- ▭ Section
- ▭ World Hillshade
- ▭ Parcels
- ▭ Montana Fish, Wildlife, and Parks
- ▭ Montana State Trust Lands
- ▭ US Forest Service
- ▭ Individual Trust
- ▭ Tribal
- ▭ Cities and Towns



North American 1983 Datum.
Lat/Long Grid

Public Information