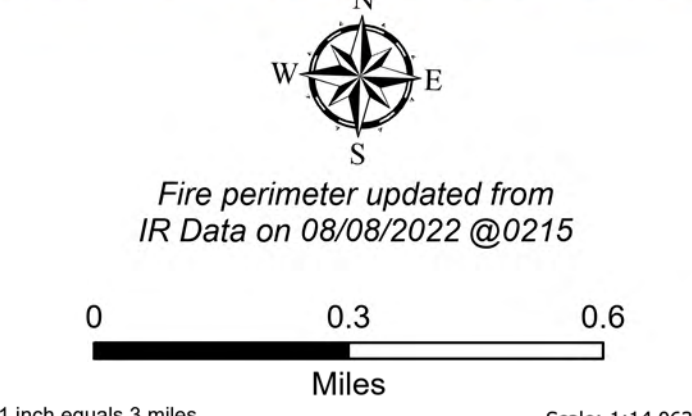
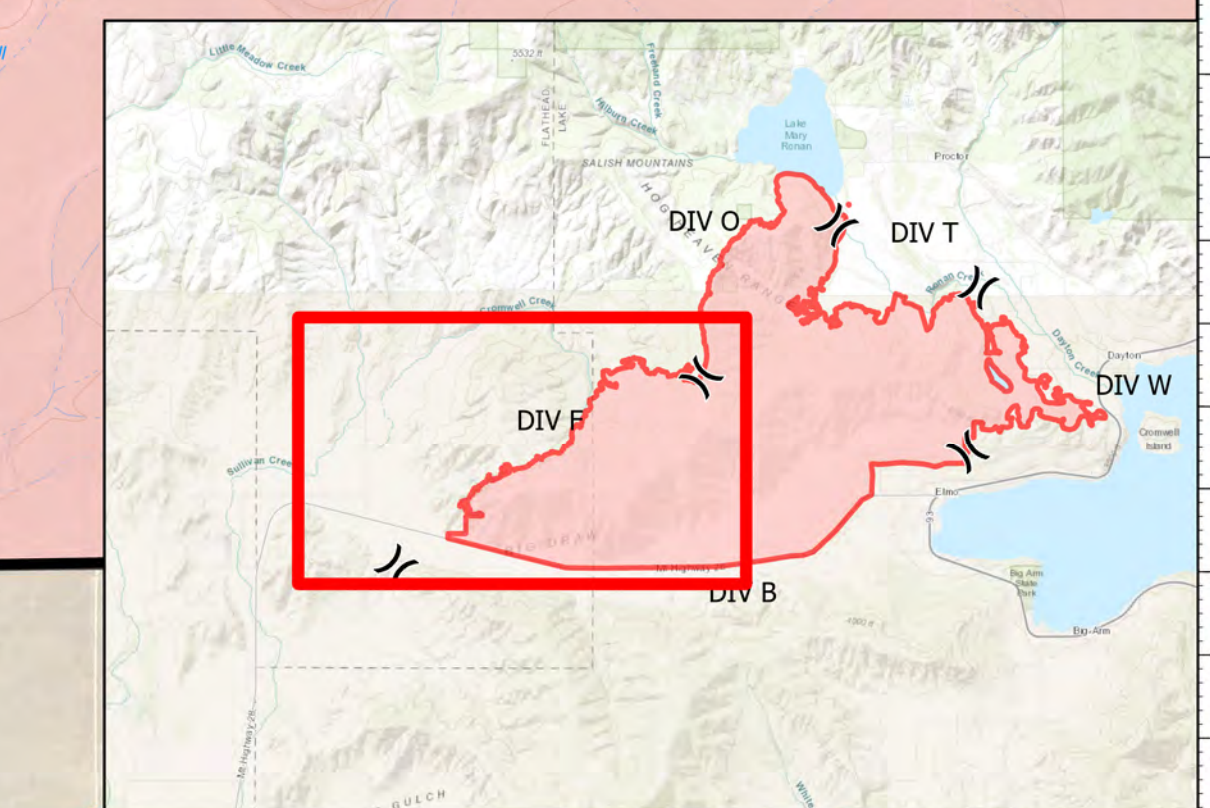


DIV F

Elmo
MTFHA-000106
21,345 acres
8/8/2022



- | | | | | | |
|----------------------|---------------------------|-----------------------------|---------------------------------|------------------------|-----------------------------|
| ■ Montana Structures | ◆ Repeater | --- Other | ▭ Wildfire Daily Fire Perimeter | ▭ Reservation Boundary | ▭ Montana State Trust Lands |
|) Division Break | ⊗ Completed Dozer Line | — Contained | ⤵ State Primary Route | ▭ State Boundary | |
| ■ Drop Point | — Completed Hand Line | — Uncontained | ⤵ Dirt (Not Paved) | ▭ County Boundary | |
| ◆ Repair Point | — Completed Road as Line | — National Designated Trail | ▭ Access or Improved Road | ▭ Individual Trust | |
| ◆ Dozer Push | — Access or Improved Road | ▭ Water Tank | ▲ Summit; Gap | ▭ Tribal | |



DIVISIONS