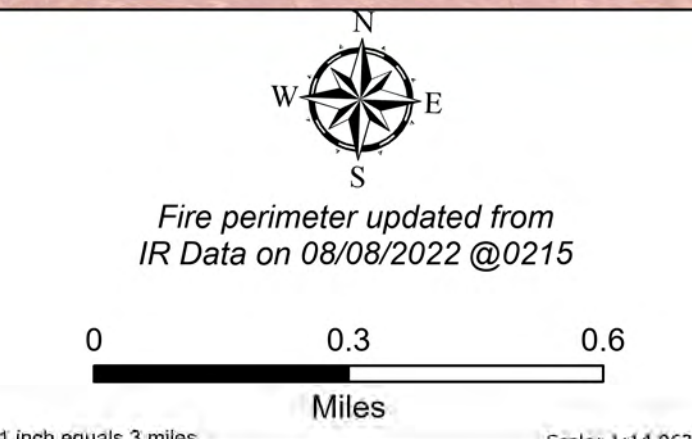
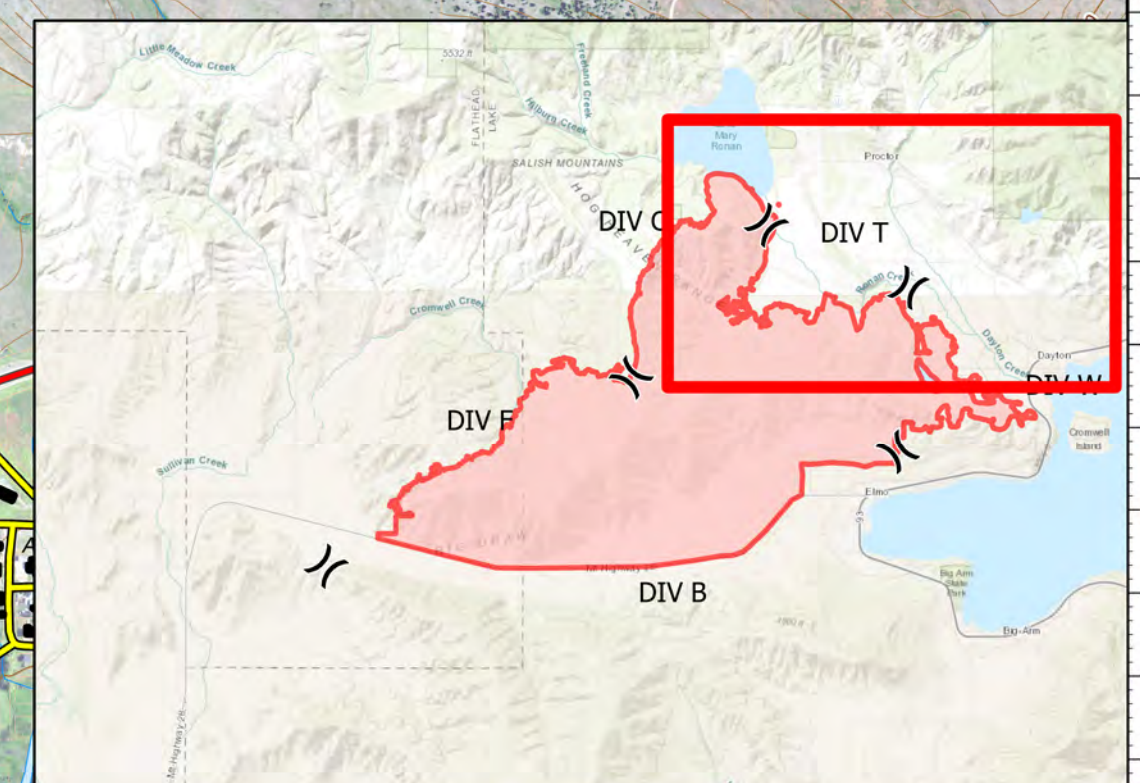


DIV T

Elmo
MTFHA-000106
21,345 acres
8/8/2022



- | | | | | |
|--|--|--|---|--|
| <ul style="list-style-type: none"> ■ Montana Structures ● Helispot) Division Break ■ Drop Point ◆ Repeater ⊙ Water Source | <ul style="list-style-type: none"> ⊗ Completed Dozer Line — Completed Plow Line — Completed Road as Line ⊗ Planned Dozer Line — Access or Improved Road | <ul style="list-style-type: none"> — Contained — Uncontained — Wildfire Daily Fire Perimeter — US Primary Route — Paved Roads — Dirt (Not Paved) | <ul style="list-style-type: none"> — Unimproved Road — State Secondary Route — Reservation Boundary — State Boundary — County Boundary — GNIS Populated Places Some | <ul style="list-style-type: none"> — Individual Trust — Tribal — Montana Fish, Wildlife, and Parks — Montana State Trust Lands |
|--|--|--|---|--|



Northern Rockies
Incident Management
Team

8/8/2022 0535
North American 1983 Datum.
Lat/Long Grid