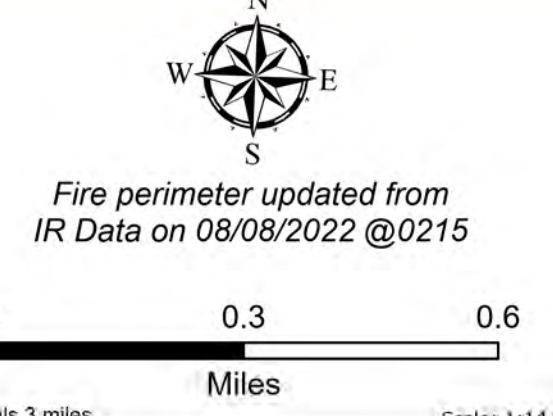
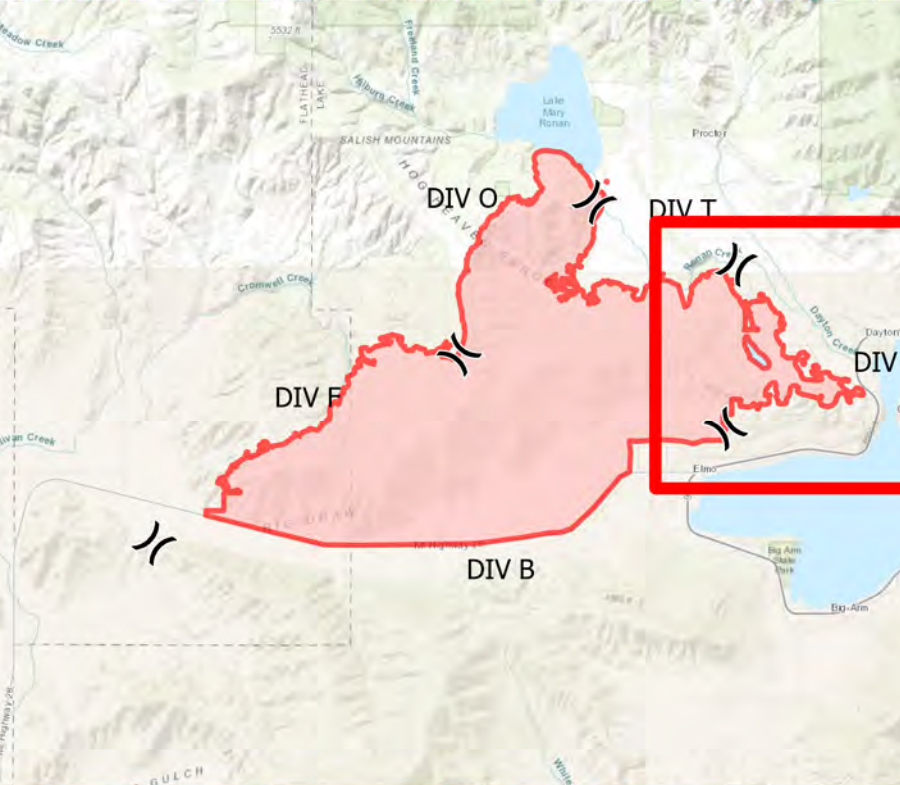


**DIV W**  
 Elmo  
 MTFHA-000106  
 21,345 acres  
 8/8/2022



- |  |  |  |  |  |
|--|--|--|--|--|
| <ul style="list-style-type: none"> <li>■ Montana Structures</li> <li>● Helispot</li> <li>X Division Break</li> <li>■ Drop Point</li> <li>◆ Repeater</li> <li>⊙ Water Source</li> </ul> | <ul style="list-style-type: none"> <li>⊗ Restricted Water Source</li> <li>⊘ Completed Dozer Line</li> <li>— Completed Plow Line</li> <li>— Completed Road as Line</li> <li>— Access or Improved Road</li> <li>— Contained</li> </ul> | <ul style="list-style-type: none"> <li>— Uncontained</li> <li>— Wildfire Daily Fire Perimeter</li> <li>— US Primary Route</li> <li>— State Primary Route</li> <li>— Paved Roads</li> <li>— Dirt (Not Paved)</li> </ul> | <ul style="list-style-type: none"> <li>— State Secondary Route</li> <li>— Reservation Boundary</li> <li>— State Boundary</li> <li>— County Boundary</li> <li>— GNIS Populated Places Some</li> <li>— Individual Trust</li> </ul> | <ul style="list-style-type: none"> <li>— Tribal</li> <li>— Montana Fish, Wildlife, and Parks</li> <li>— Montana State Trust Lands</li> </ul> |
|--|--|--|--|--|



Northern Rockies  
Incident Management Team

8/8/2022 0531  
North American 1983 Datum.  
Lat/Long Grid

DIVISIONS