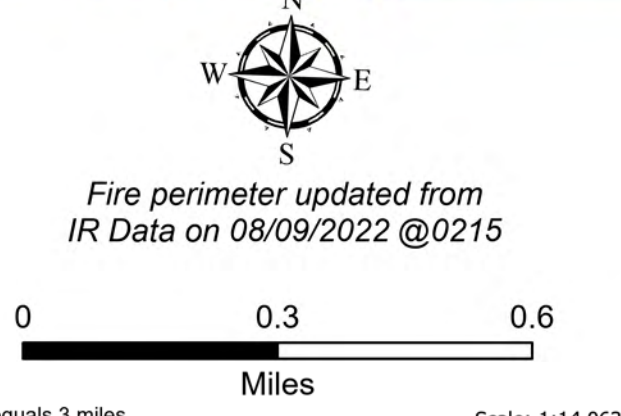


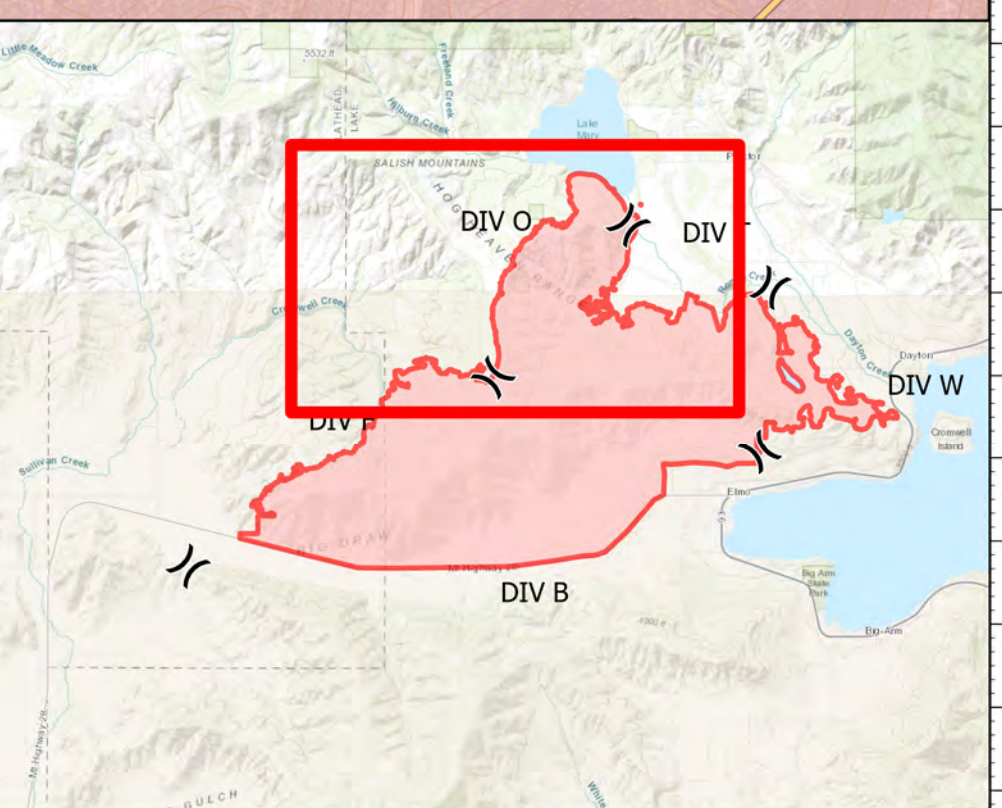
**DIV O**

Elmo  
MTFHA-000106  
21,348 acres  
8/9/2022



Fire perimeter updated from  
IR Data on 08/09/2022 @0215

- |                      |                |                                 |                              |                                     |
|----------------------|----------------|---------------------------------|------------------------------|-------------------------------------|
| ■ Montana Structures | 📍 Dozer Push   | Ⓟ Pump                          | 🛣️ State Secondary Route     | 🟡 Individual Trust                  |
| ● Helispot           | 📡 Repeater     | Ⓜ️ Water Tank                   | 🛤️ National Designated Trail | 🟦 Tribal                            |
| ⌘ Division Break     | 🌊 Water Source | 🔴 Wildfire Daily Fire Perimeter | 🗡️ Reservation Boundary      | 🟠 Montana Fish, Wildlife, and Parks |
| 📍 Drop Point         | 🛣️ Contained   | 🛣️ Paved Roads                  | 🗡️ State Boundary            | 🟡 Montana State Trust Lands         |
| 🏕️ Camp              | 🔴 Uncontained  | 🛣️ Dirt (Not Paved)             | 🗡️ County Boundary           |                                     |



**Northern Rockies**  
Incident Management Team

8/9/2022 0515  
North American 1983 Datum,  
Lat/Long Grid

DIVISIONS