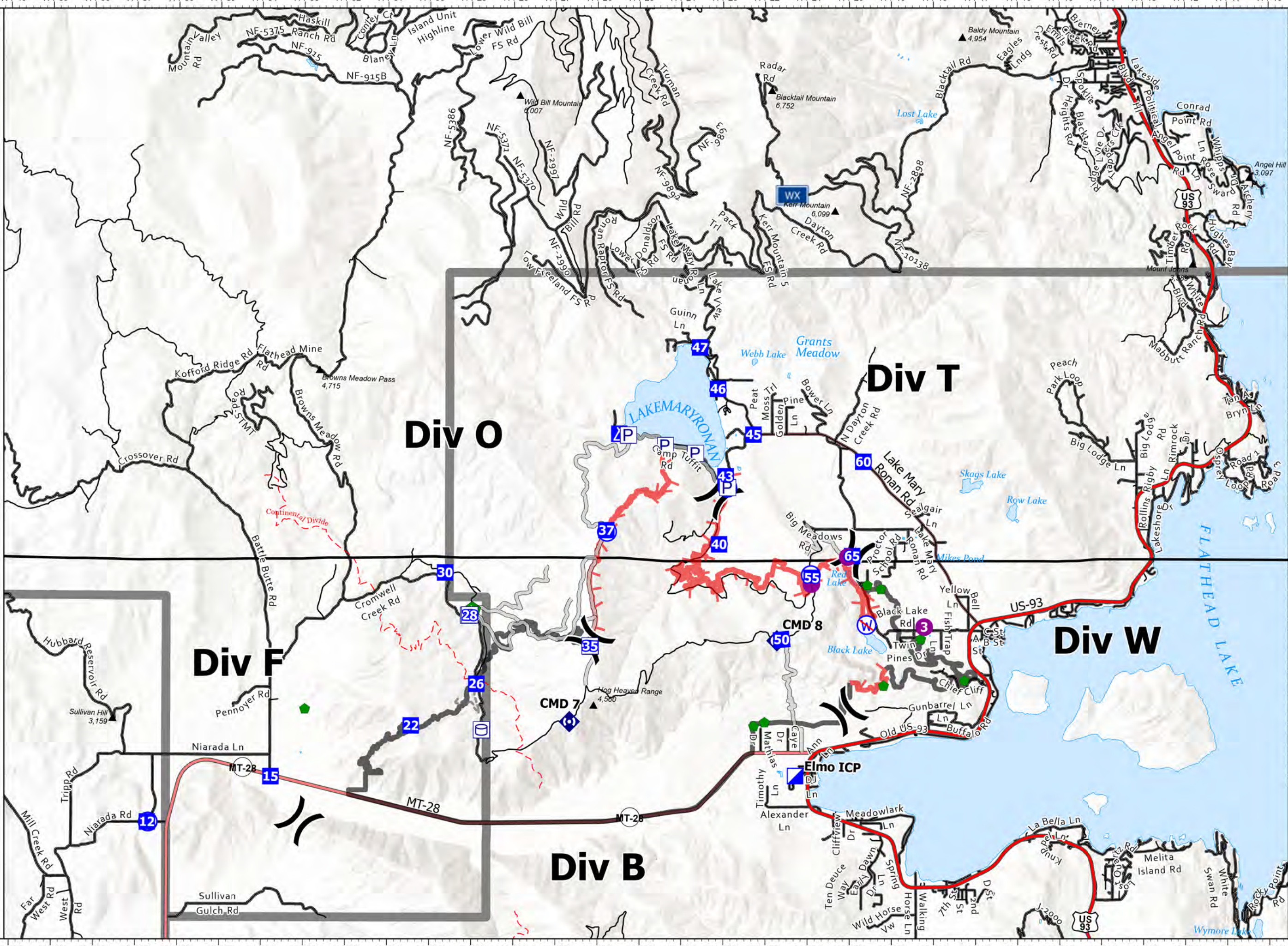


Transportation Map

Elmo
MTFHA-000106
21,348 acres
8/9/2022

- Label Point
- Pump
- Water Tank
- Helispot
- Division Break
- Incident Command Post
- Drop Point
- Camp
- Repair Point
- Dozer Push
- Repeater
- Water Source
- Restricted Water Source
- Access or Improved Road
- Other
- Contained
- Uncontained
- CSKT_Reservation_Boundary
- Summit; Gap
- National Designated Trail
- US Primary Route
- State Primary Route
- <all other values>
- State Secondary Route
- Paved Roads
- Dirt (Not Paved)
- County Boundary
- Lake / Pond
- Lake / Pond (Intermittent)
- RAWS Stations



Fire perimeter updated from IR Data on 08/09/2022 @0215

0 1 2 Miles

Scale: 1:103,585

8/9/2022 0433
North American 1983
Datum: Lat Long Grid