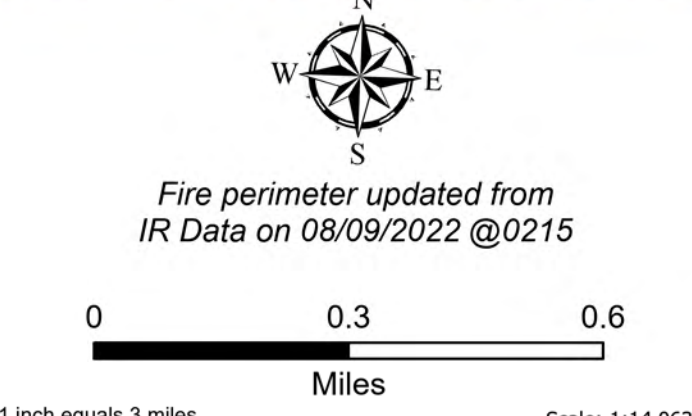


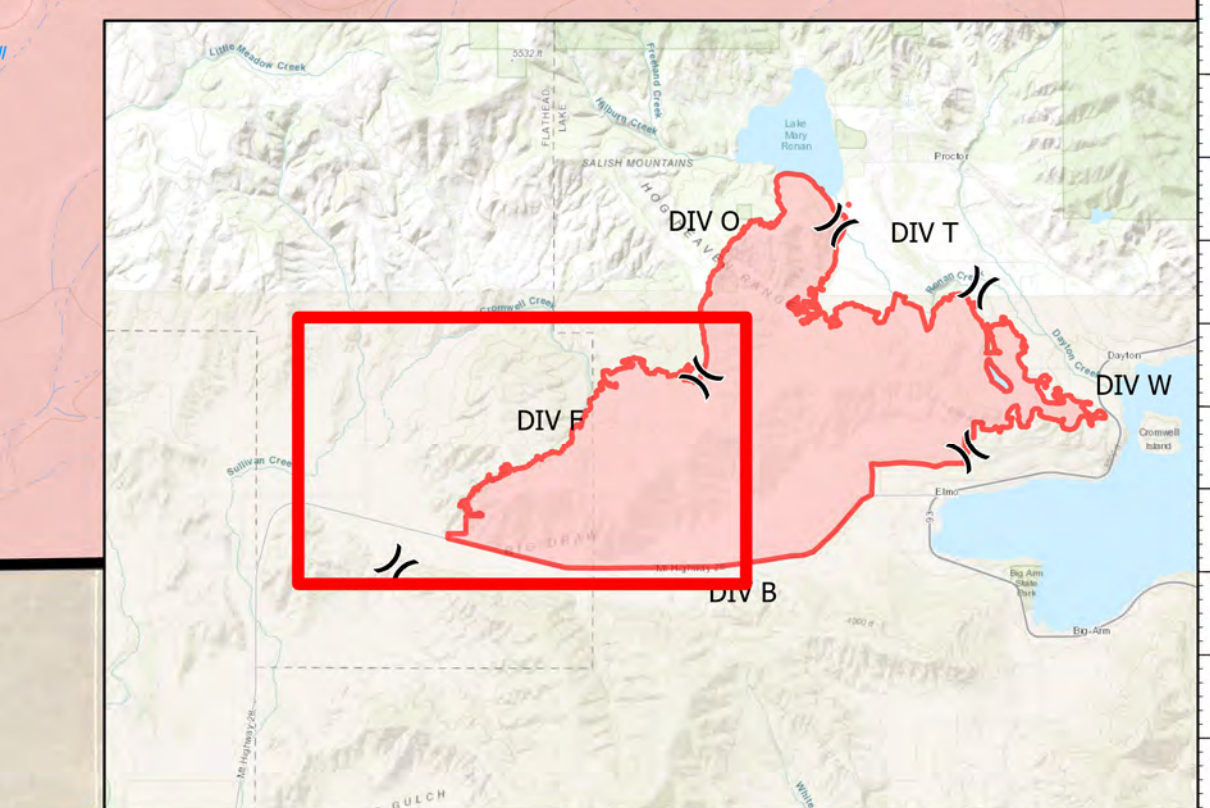
DIV F

Elmo
MTFHA-000106
21,348 acres
8/10/2022



Fire perimeter updated from
IR Data on 08/09/2022 @0215

- | | | | | | |
|--|--|---|--|---|---|
| <ul style="list-style-type: none"> ■ Montana Structures X Division Break ■ Drop Point ● Repair Point ➡ Dozer Push | <ul style="list-style-type: none"> ◆ Repeater ⚠ Hazard Ⓜ Water Source XXXX Completed Dozer Line — Completed Hand Line | <ul style="list-style-type: none"> R— Completed Road as Line — Access or Improved Road --- Other — Contained — Uncontained | <ul style="list-style-type: none"> Ⓟ Pump Ⓜ Water Tank 🔴 Wildfire Daily Fire Perimeter 📍 State Primary Route 📍 Dirt (Not Paved) | <ul style="list-style-type: none"> 📍 National Designated Trail ▲ Summit; Gap ▭ Reservation Boundary ▭ State Boundary ▭ County Boundary | <ul style="list-style-type: none"> 🟡 Individual Trust 🟠 Tribal 🟢 Montana State Trust Lands |
|--|--|---|--|---|---|



Northern Rockies
Incident Management
Team

8/10/2022 0446
North American 1983 Datum.
Lat/Long Grid