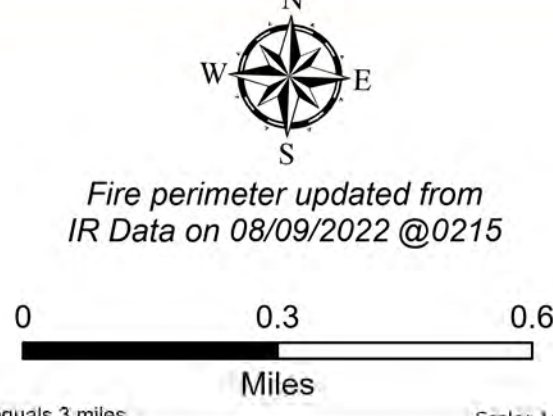
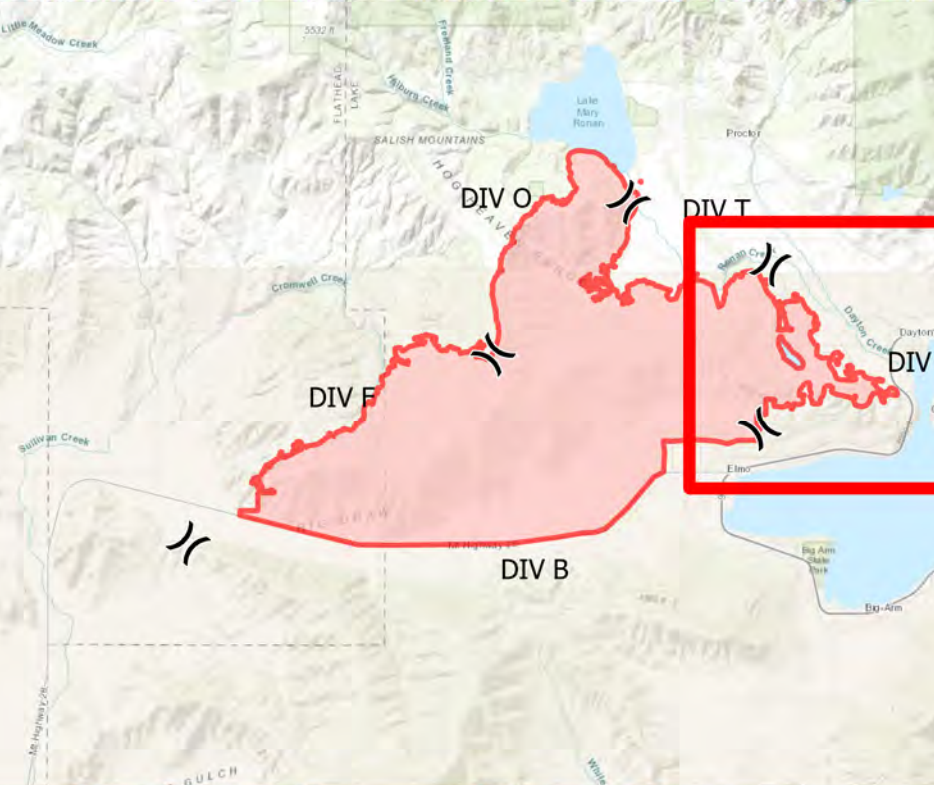


DIV W

Elmo
 MTFHA-000106
 21,348 acres
 8/10/2022



- | | | | | | |
|-----------------------|---------------------------|---------------------------------|--------------------------|-------------------------------------|-----------------------------|
| ■ Montana Structures | ⬠ Repeater | — Access or Improved Road | 🚛 US Primary Route | ⬠ State Boundary | 🟦 Montana State Trust Lands |
| ● Helispot | 🟦 Water Source | — Contained | 🚛 State Primary Route | 🏘️ County Boundary | |
| ⌘ Division Break | 🟦 Restricted Water Source | 🔴 Uncontained | 🛣️ Paved Roads | 🏘️ GNIS Populated Places Some | |
| 📍 Drop Point | ⌘ Completed Dozer Line | 🔴 Wildfire Daily Fire Perimeter | 🛣️ Dirt (Not Paved) | 🟡 Individual Trust | |
| 🟢 Repair Point | — Completed Plow Line | | 🛣️ State Secondary Route | 🟡 Tribal | |
| 🟢 Fence - Cut/Damaged | — Completed Road as Line | | 🏠 Reservation Boundary | 🟡 Montana Fish, Wildlife, and Parks | |
| | | | | | |



Northern Rockies
 Incident Management
 Team

8/10/2022 0425
 North American 1983 Datum.
 Lat/Long Grid