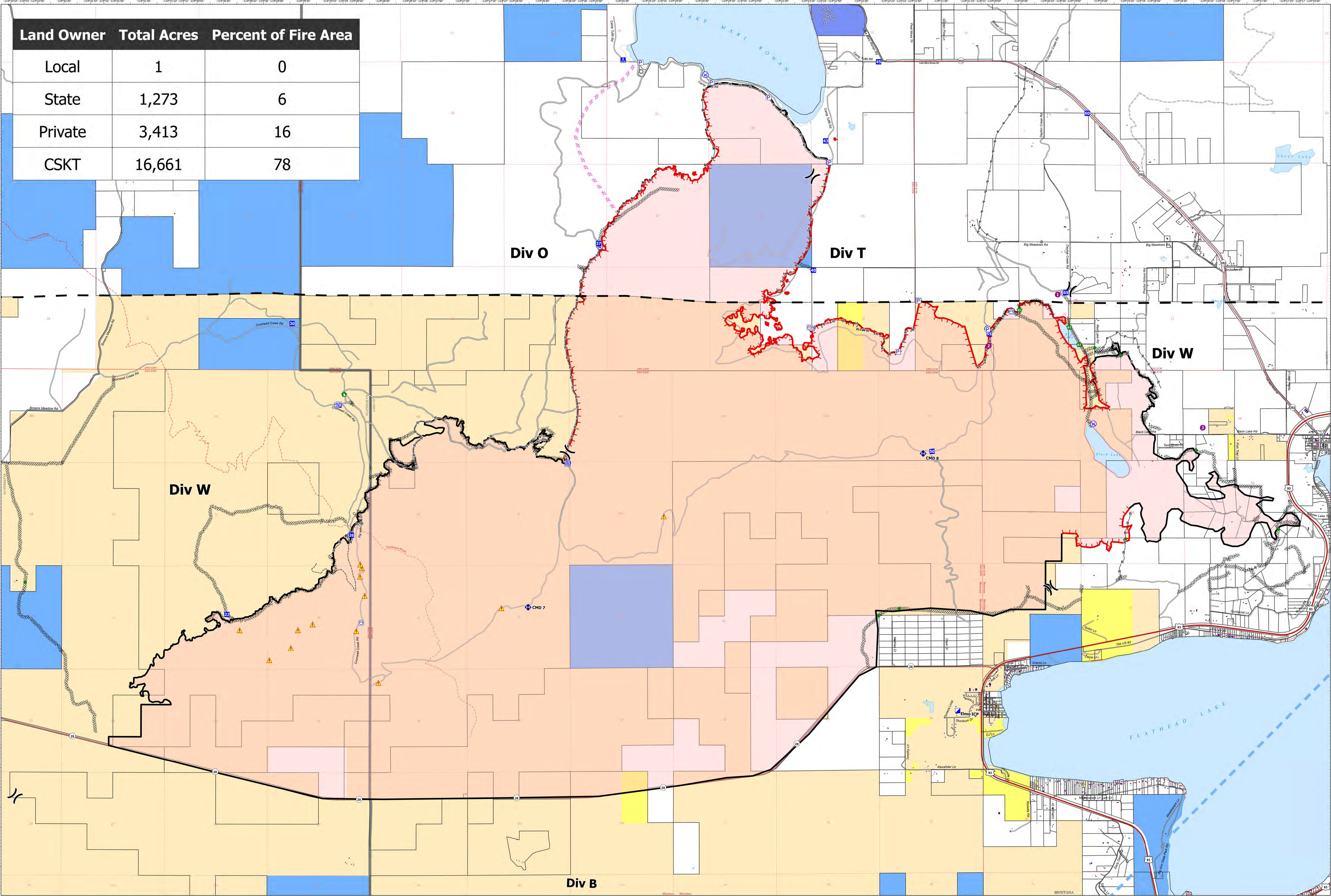
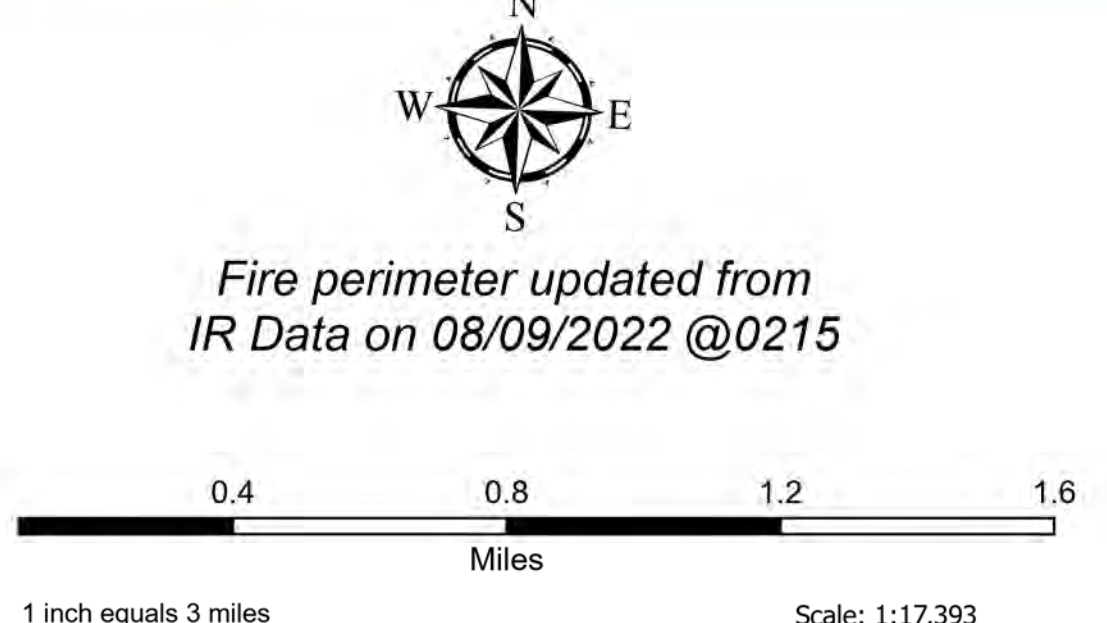


Land Owner	Total Acres	Percent of Fire Area
Local	1	0
State	1,273	6
Private	3,413	16
CSKT	16,661	78



Ownership
 Elmo
 MTFHA-000106
 21,348 acres
 8/10/2022



- Label Point
- ⊕ Pump
- ⊕ Water Tank
- Helispot
- ⊗ Division Break
- ⊕ Incident Command Post
- ⊕ Drop Point
- ⊕ Camp

- Hot Spot - Spot Fire
- Other
- Landmark
- Repair Point
- Fence - Cut/Damaged
- Dozer Push
- Repeater
- ▲ Safety Zone

- ▲ Hazard
- Water Source
- Restricted Water Source
- ⊗ Completed Dozer Line
- ⊗ Completed Hand Line
- ⊗ Completed Mixed Construction Line
- ⊗ Completed Plow Line
- ⊗ Completed Road as Line

- ⊗ Planned Dozer Line
- Access or Improved Road
- Other
- ⊗ Temporary Flight Restriction
- ⊗ Contained
- ⊗ Uncontained
- ⊗ Perimeter
- ⊗ Parcel Boundary

- Montana Structures
- ⊗ National Designated Trail
- ⊗ US Primary Route
- ⊗ State Primary Route
- ⊗ State Secondary Route
- ⊗ Unimproved Road
- ⊗ Paved Roads
- ⊗ Dirt (Not Paved)

- ⊗ State Boundary
- ⊗ County Boundary
- ⊗ Lake / Pond
- ⊗ Lake / Pond (Intermittent)
- ⊗ Township
- ⊗ Section
- ⊗ Montana Fish, Wildlife, and Parks
- ⊗ Montana State Trust Lands

- Individual Trust
- Tribal