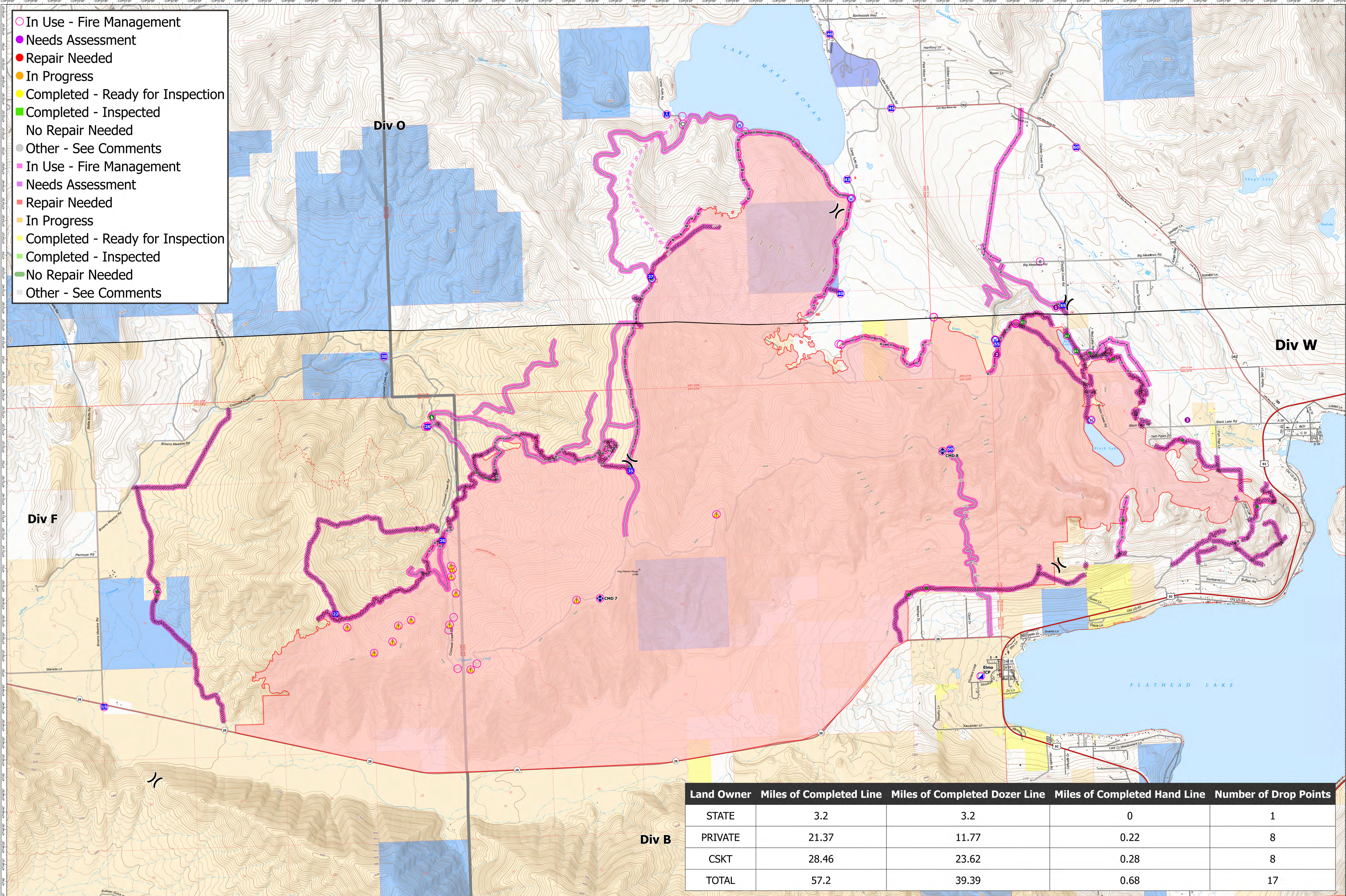
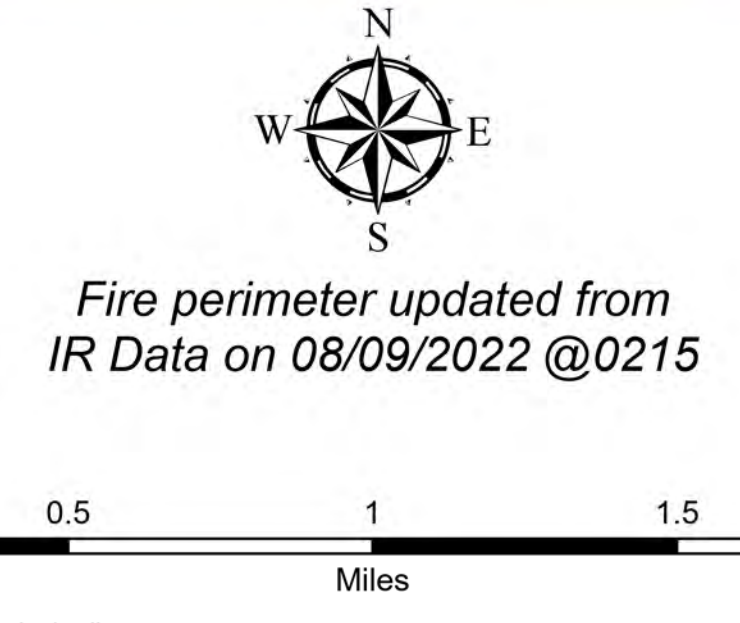


- In Use - Fire Management
- Needs Assessment
- Repair Needed
- In Progress
- Completed - Ready for Inspection
- Completed - Inspected
- No Repair Needed
- Other - See Comments
- In Use - Fire Management
- Needs Assessment
- Repair Needed
- In Progress
- Completed - Ready for Inspection
- Completed - Inspected
- No Repair Needed
- Other - See Comments



Land Owner	Miles of Completed Line	Miles of Completed Dozer Line	Miles of Completed Hand Line	Number of Drop Points
STATE	3.2	3.2	0	1
PRIVATE	21.37	11.77	0.22	8
CSKT	28.46	23.62	0.28	8
TOTAL	57.2	39.39	0.68	17

Repair Status
 Elmo
 MTFHA-000106
 21,348 acres
 8/10/2022



- Montana Structures
- Camp
- Dozer Push
- Restricted Water Source
- Helispot
- Hot Spot - Spot Fire
- Repeater
- Completed Road as Line
- Division Break
- Other
- Safety Zone
- Planned Dozer Line
- Incident Command Post
- Landmark
- Hazard
- Access or Improved Road
- Drop Point
- Repair Point
- Water Source
- Construction Line
- Fence - Cut/Damaged
- Completed Plow Line
- Wildfire Daily Fire Perimeter
- US Primary Route
- State Primary Route
- Label Point
- Summit; Gap
- GNIS Populated Places Some National Designated Trail
- State Secondary Route
- Paved Roads
- Dirt (Not Paved)
- County Boundary
- Lake / Pond
- Lake / Pond (Intermittent)
- Stream/River; Artificial Path
- Stream/River Intermittent
- Township
- Section
- Montana Fish, Wildlife, and Parks
- Montana State Trust Lands
- Individual Trust
- Tribal
- CSKT Boundary