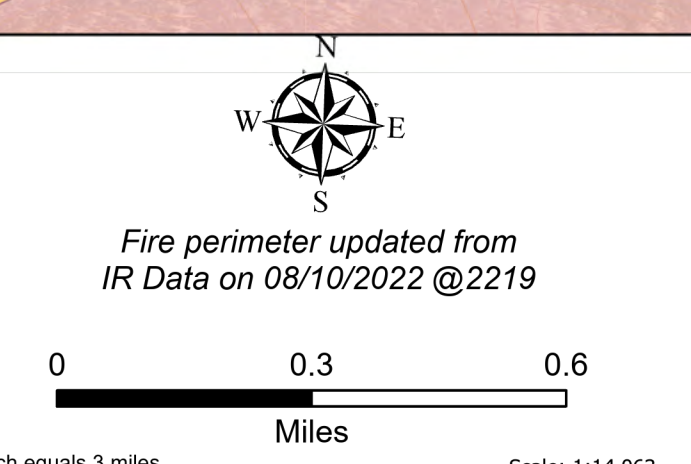
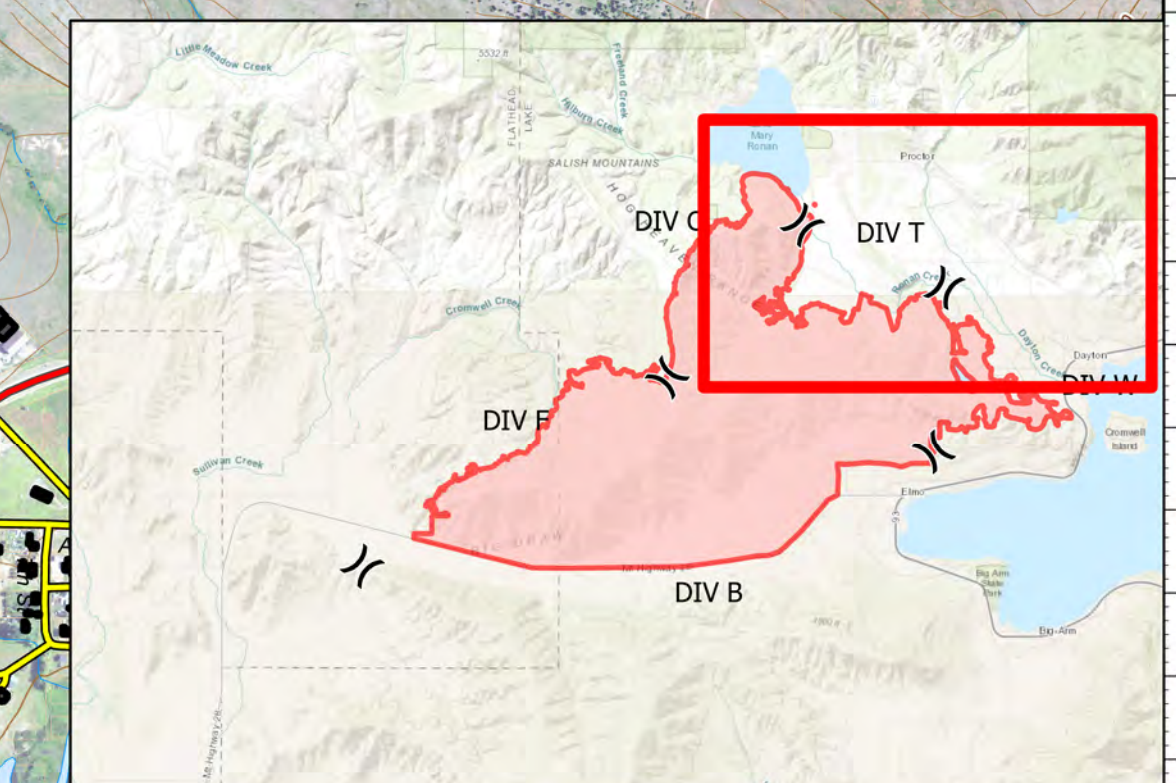


DIV T
 Elmo
 MTFHA-000106
 21,349 acres
 8/11/2022



- | | | | | | |
|--|---|---|---|---|--|
| <ul style="list-style-type: none"> ■ Montana Structures ● Helispot ⌘ Division Break ■ Drop Point ○ Landmark ● Repair Point | <ul style="list-style-type: none"> ⬮ Fence - Cut/Damaged ⬮ Repeater ⊕ Water Source ⊕ Restricted Water Source ⊗ Completed Dozer Line ⊗ Completed Hand Line | <ul style="list-style-type: none"> — Completed Mixed Construction Line — Completed Plow Line — Completed Road as Line — Access or Improved Road — Contained — Uncontained | <ul style="list-style-type: none"> ⊕ Pump ⊕ Water Tank ⊕ US Primary Route ⊕ Paved Roads ⊕ Dirt (Not Paved) | <ul style="list-style-type: none"> — Unimproved Road — State Secondary Route — Reservation Boundary — State Boundary — County Boundary GNIS Populated Places Some | <ul style="list-style-type: none"> ■ Individual Trust ■ Tribal ■ Montana Fish, Wildlife, and Parks ■ Montana State Trust Lands |
|--|---|---|---|---|--|



**Northern Rockies
Incident Management
Team**

8/11/2022 0437
 North American 1983 Datum.
 Lat/Long Grid

DIVISIONS