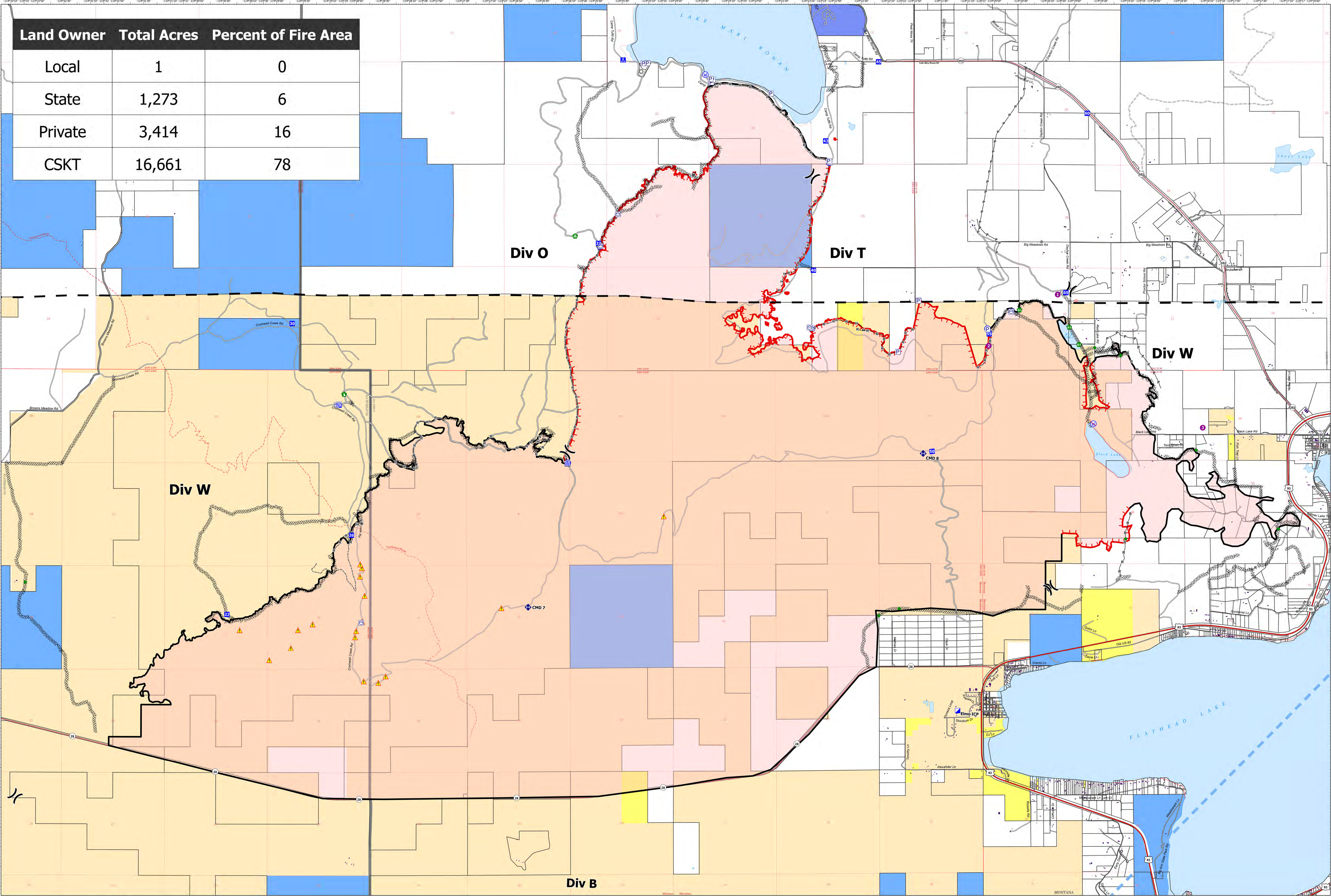
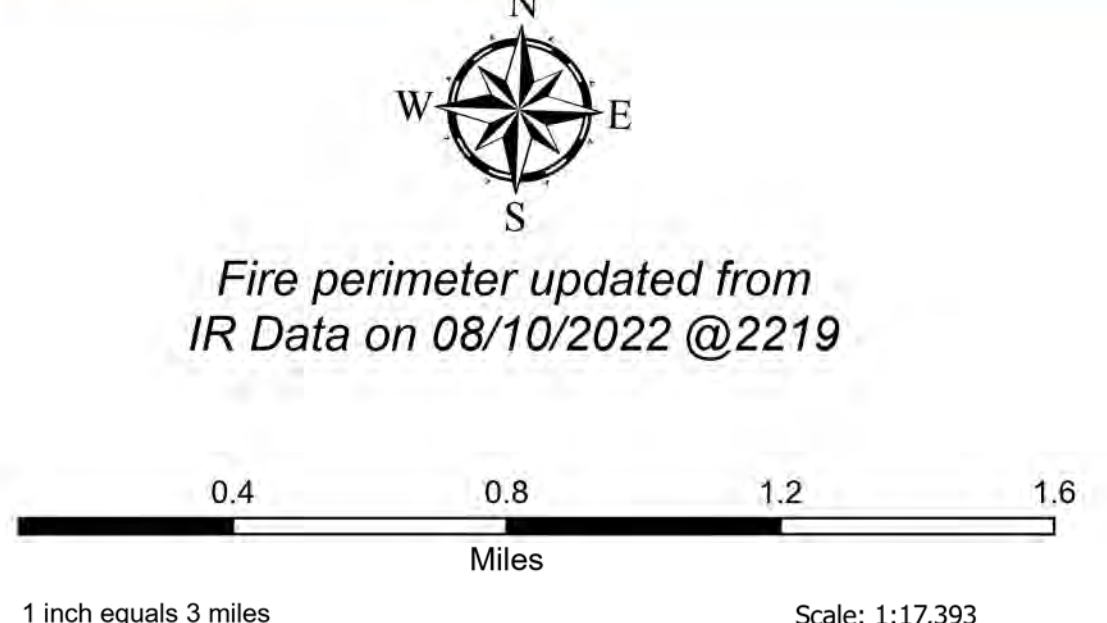


Land Owner	Total Acres	Percent of Fire Area
Local	1	0
State	1,273	6
Private	3,414	16
CSKT	16,661	78



Ownership
 Elmo
 MTFHA-000106
 21,349 acres
 8/11/2022



- Label Point
- ⊠ Pump
- ⊠ Water Tank
- Helispot
- ⊠ Division Break
- ⊠ Incident Command Post
- ⊠ Drop Point
- ⊠ Camp

- Hot Spot - Spot Fire
- Other
- Landmark
- Repair Point
- Landing or Log Deck
- Fence - Cut/Damaged
- Dozer Push
- Repeater

- ▲ Safety Zone
- ▲ Hazard
- Water Source
- Restricted Water Source
- ⊠ Completed Dozer Line
- ⊠ Completed Hand Line
- ⊠ Completed Mixed Construction Line
- ⊠ Completed Plow Line

- Completed Road as Line
- Access or Improved Road
- Other
- Temporary Flight Restriction
- Contained
- Uncontained
- Perimeter
- Parcel Boundary

- Montana Structures
- National Designated Trail
- US Primary Route
- State Primary Route
- State Secondary Route
- Unimproved Road
- Paved Roads
- Dirt (Not Paved)

- State Boundary
- County Boundary
- Lake / Pond
- Lake / Pond (Intermittent)
- Township
- Section
- Montana Fish, Wildlife, and Parks
- Montana State Trust Lands

- Individual Trust
- Tribal