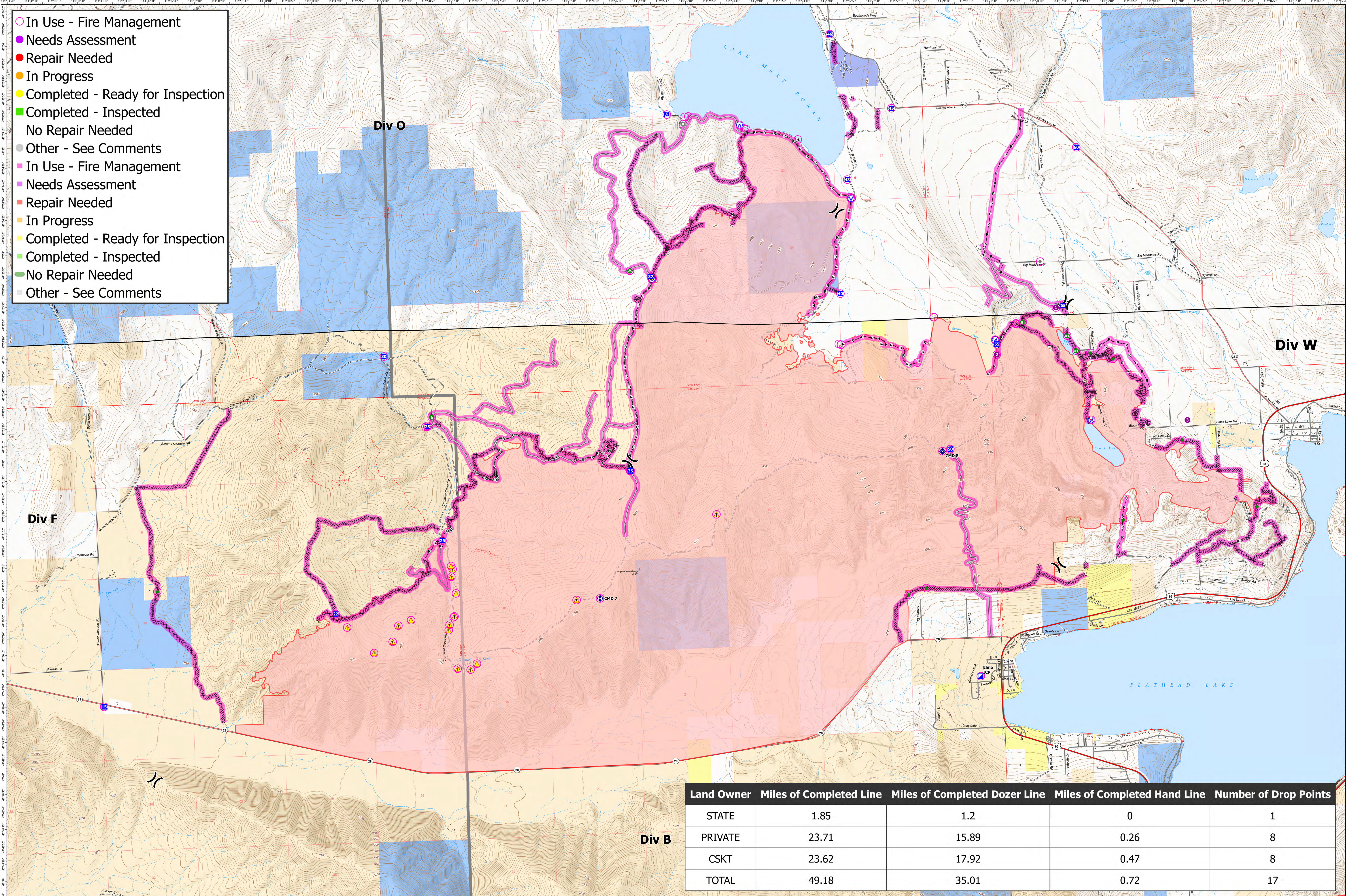
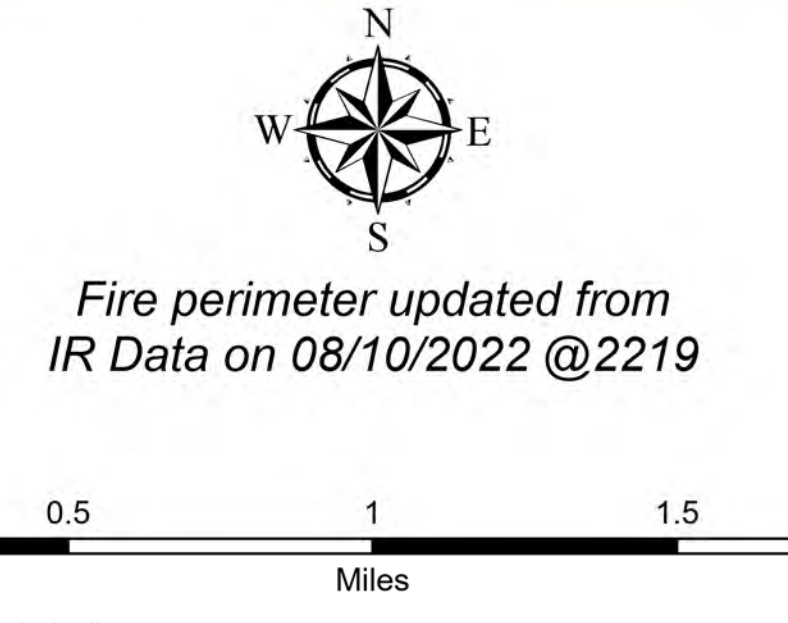


- In Use - Fire Management
- Needs Assessment
- Repair Needed
- In Progress
- Completed - Ready for Inspection
- Completed - Inspected
- No Repair Needed
- Other - See Comments
- In Use - Fire Management
- Needs Assessment
- Repair Needed
- In Progress
- Completed - Ready for Inspection
- Completed - Inspected
- No Repair Needed
- Other - See Comments



Land Owner	Miles of Completed Line	Miles of Completed Dozer Line	Miles of Completed Hand Line	Number of Drop Points
STATE	1.85	1.2	0	1
PRIVATE	23.71	15.89	0.26	8
CSKT	23.62	17.92	0.47	8
TOTAL	49.18	35.01	0.72	17

Repair Status
 Elmo
 MTFHA-000106
 21,349 acres
 8/11/2022



- Montana Structures
- Camp
- Fence - Cut/Damaged
- Restricted Water Source
- Helispot
- Hot Spot - Spot Fire
- Dozer Push
- Completed Dozer Line
- Division Break
- Other
- Repeater
- Completed Hand Line
- Incident Command Post
- Landmark
- Safety Zone
- Completed Mixed Construction Line
- Repair Point
- Hazard
- Completed Plow Line
- Landing or Log Deck
- Water Source
- Completed Road as Line
- Access or Improved Road
- Other
- Wildfire Daily Fire Perimeter
- US Primary Route
- State Primary Route
- Label Point
- Summit; Gap
- GNIS Populated Places Some
- National Designated Trail
- State Secondary Route
- Paved Roads
- Dirt (Not Paved)
- County Boundary
- Lake / Pond
- Lake / Pond (Intermittent)
- Stream/River; Artificial Path
- Stream/River Intermittent
- Township
- Section
- Montana Fish, Wildlife, and Parks
- Montana State Trust Lands
- Individual Trust
- Tribal
- CSKT Boundary