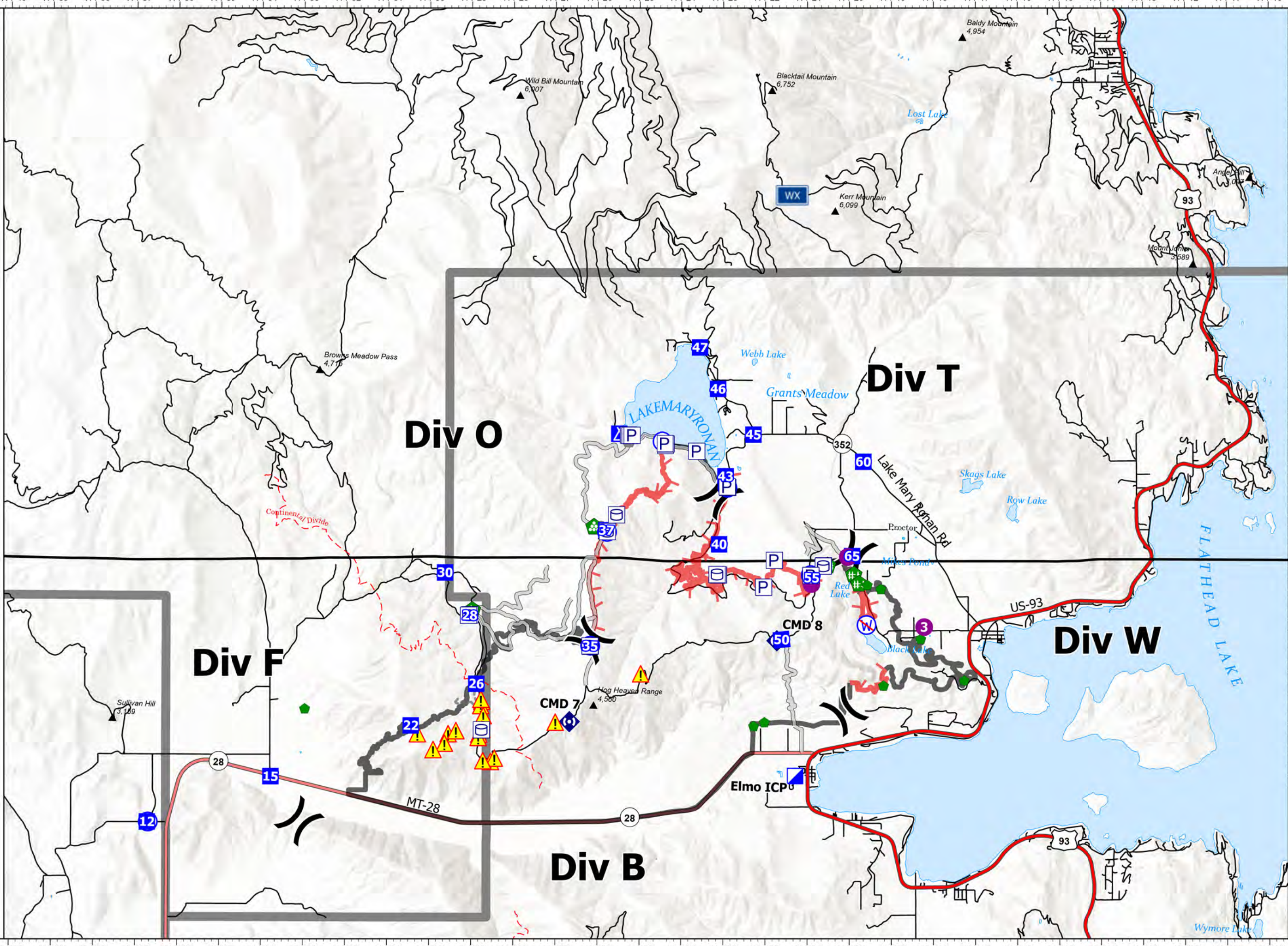


Transportation Map

Elmo
MTFHA-000106
21,349 acres
8/11/2022

- Label Point
- Ⓟ Pump
- Ⓜ Water Tank
- Helispot
-) (Division Break
- Ⓜ Incident Command Post
- Drop Point
- Ⓜ Camp
- Landmark
- Repair Point
- Ⓜ Landing or Log Deck
- Ⓜ Fence - Cut/Damaged
- Ⓜ Dozer Push
- Ⓜ Repeater
- ⚠ Safety Zone
- ⚠ Hazard
- Ⓜ Water Source
- Ⓜ Restricted Water Source
- Access or Improved Road
- Other
- ▭ Contained
- ▭ Uncontained
- ▭ CSKT_Reservation_Boundary
- ▲ Summit; Gap
- - - National Designated Trail
- US Primary Route
- State Primary Route
- <all other values>
- County Boundary
- Lake / Pond
- Lake / Pond (Intermittent)
- Ⓜ RAWS Stations



North arrow and scale bar (0 to 2 miles).
Fire perimeter updated from IR Data on 08/10/2022 @2219
Scale: 1:100,000
8/11/2022 0437
North American 1983
Datum: Lat, Long Grid