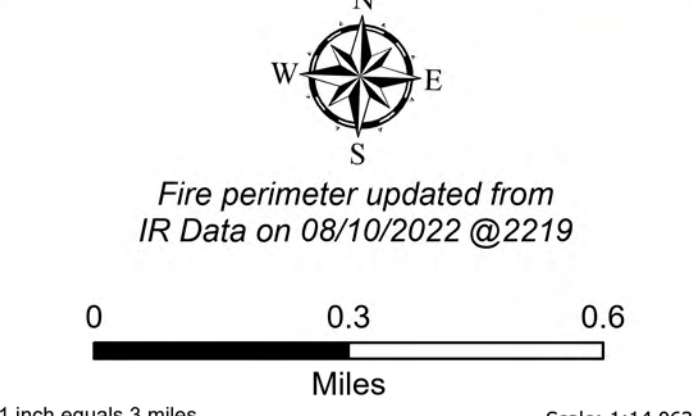


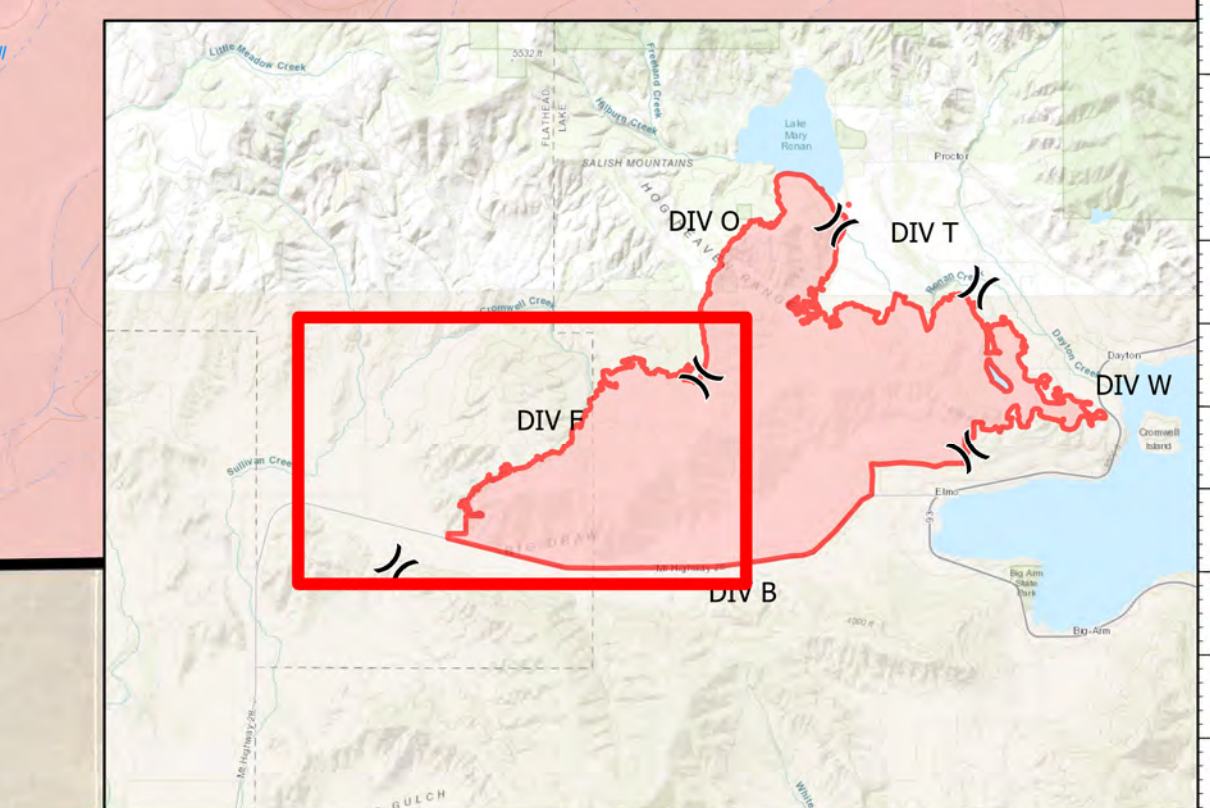
**DIV F**

Elmo  
MTFHA-000106  
21,349 acres  
08/12/2022



Fire perimeter updated from  
IR Data on 08/10/2022 @2219

- |  |  |   |  |   |   |
|--|--|---|--|---|---|
| <ul style="list-style-type: none"> <li>■ Montana Structures</li> <li>X Division Break</li> <li>■ Drop Point</li> <li>◆ Repair Point</li> <li>◆ Dozer Push</li> </ul> | <ul style="list-style-type: none"> <li>◆ Repeater</li> <li>▲ Hazard</li> <li>⊙ Water Source</li> <li>XXXX Completed Dozer Line</li> <li>— Completed Hand Line</li> </ul> | <ul style="list-style-type: none"> <li>R— Completed Road as Line</li> <li>— Access or Improved Road</li> <li>--- Other</li> <li>— Contained</li> <li>— Uncontained</li> </ul> | <ul style="list-style-type: none"> <li>⊠ Pump</li> <li>⊠ Water Tank</li> <li>■ Wildfire Daily Fire Perimeter</li> <li>~ State Primary Route</li> <li>~ Dirt (Not Paved)</li> </ul> | <ul style="list-style-type: none"> <li>~ National Designated Trail</li> <li>▲ Summit; Gap</li> <li>□ Reservation Boundary</li> <li>□ State Boundary</li> <li>■ County Boundary</li> </ul> | <ul style="list-style-type: none"> <li>■ Individual Trust</li> <li>■ Tribal</li> <li>■ Montana State Trust Lands</li> </ul> |
|--|--|---|--|---|---|



**Northern Rockies  
Incident Management  
Team**

8/11/2022 2235  
North American 1983 Datum.  
Lat/Long Grid