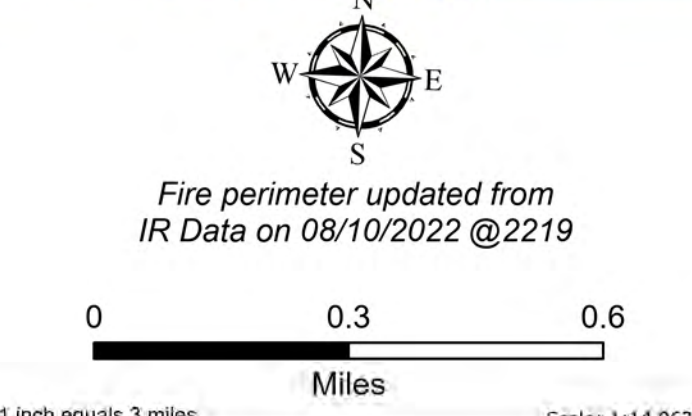
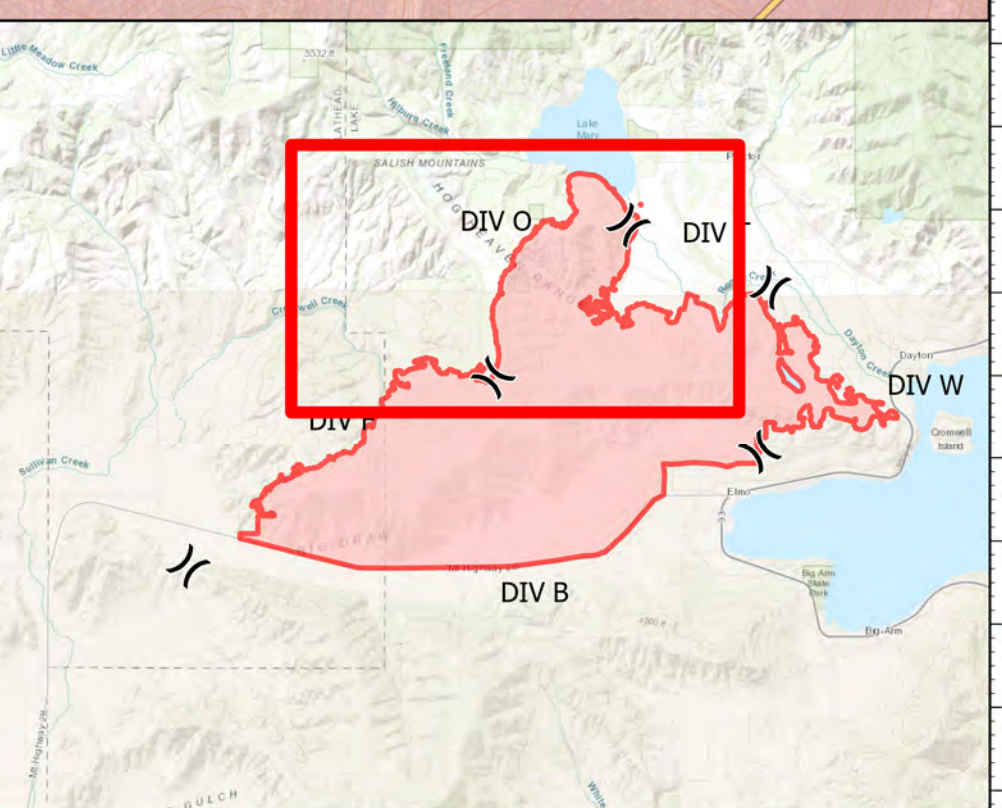


DIV O

Elmo
MTFHA-000106
21,349 acres
08/12/2022



- | | | | | | |
|--|---|---|--|---|---|
| <ul style="list-style-type: none"> ■ Montana Structures ● Helispot) Division Break ■ Drop Point ⓧ Camp ○ Landmark | <ul style="list-style-type: none"> 🌲 Landing or Log Deck 🚧 Fence - Cut/Damaged ➡ Dozer Push 📡 Repeater ⚠ Safety Zone ⚡ Hazard | <ul style="list-style-type: none"> 🚰 Water Source ⓧ Completed Dozer Line — Completed Hand Line Ⓜ Completed Mixed Construction Line — Completed Plow Line — Completed Road as Line | <ul style="list-style-type: none"> — Access or Improved Road — Contained — Uncontained 🚰 Pump 🛢 Water Tank 🚰 Wildfire Daily Fire Perimeter | <ul style="list-style-type: none"> 🛣 Paved Roads 🛣 Dirt (Not Paved) 🛣 State Secondary Route 🛣 National Designated Trail 🛣 Reservation Boundary 🛣 State Boundary | <ul style="list-style-type: none"> 🗺 County Boundary 🗺 Individual Trust 🗺 Tribal 🗺 Montana Fish, Wildlife, and Parks 🗺 Montana State Trust Lands |
|--|---|---|--|---|---|



Northern Rockies
Incident Management
Team

8/11/2022 2230
North American 1983 Datum.
Lat/Long Grid