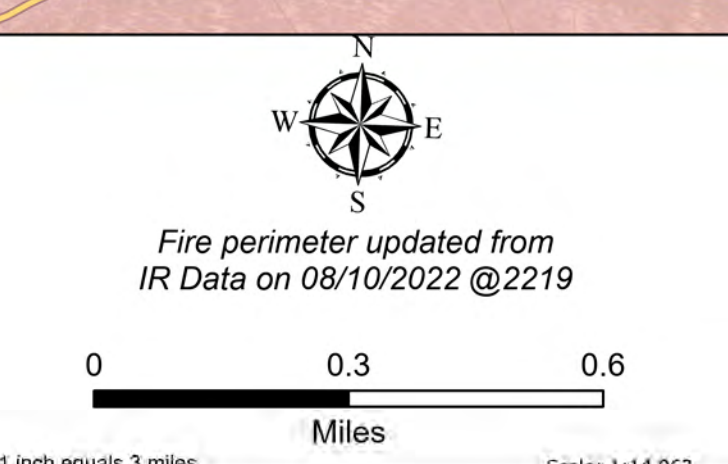
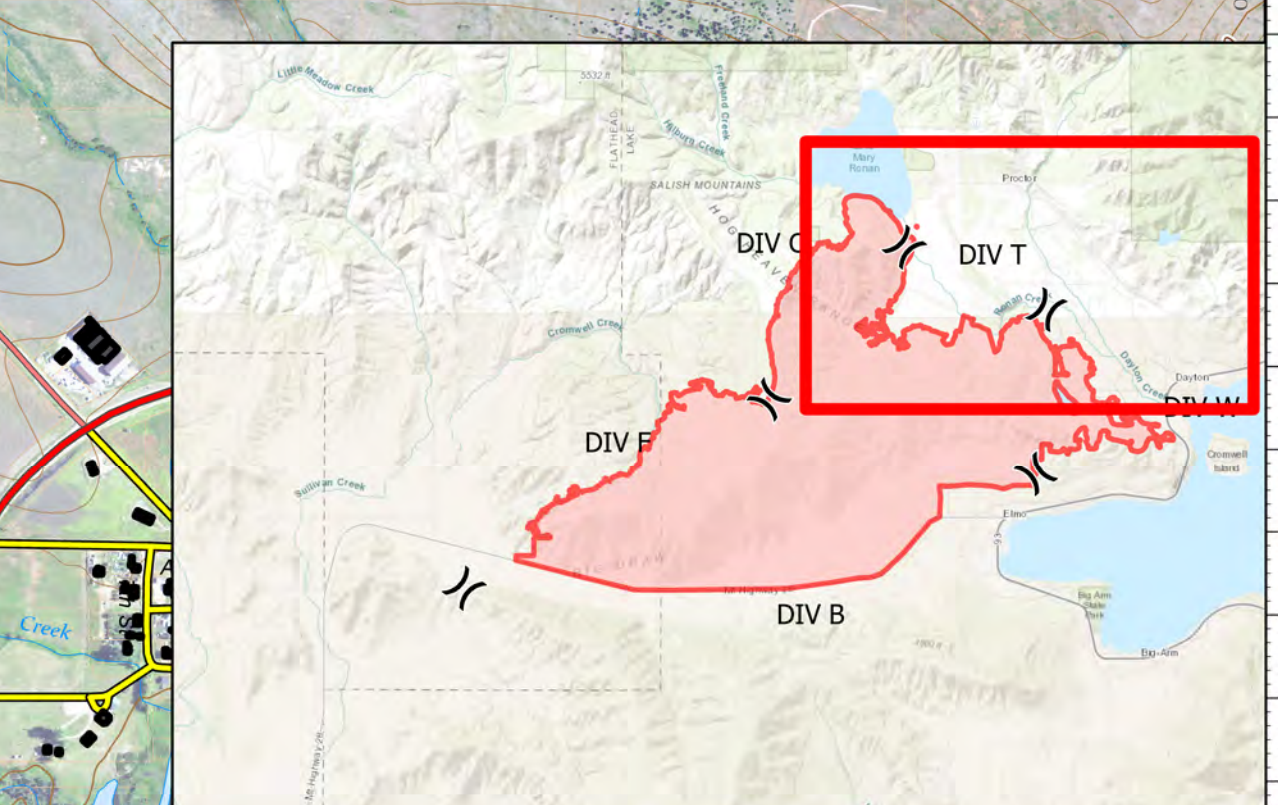


DIV T
 Elmo
 MTFHA-000106
 21,349 acres
 08/12/2022



- | | | | | | |
|--------------------|-------------------------|-----------------------------------|-------------------------------|----------------------------|-----------------------------------|
| Montana Structures | Fence - Cut/Damaged | Completed Mixed Construction Line | Pump | Unimproved Road | Individual Trust |
| Helispot | Repeater | Completed Plow Line | Water Tank | State Secondary Route | Tribal |
| Division Break | Water Source | Completed Road as Line | Wildfire Daily Fire Perimeter | Reservation Boundary | Montana Fish, Wildlife, and Parks |
| Drop Point | Restricted Water Source | Access or Improved Road | US Primary Route | State Boundary | Montana State Trust Lands |
| Landmark | Completed Dozer Line | Contained | Paved Roads | County Boundary | |
| Repair Point | Completed Hand Line | Uncontained | Dirt (Not Paved) | GNIS Populated Places Some | |



Northern Rockies Incident Management Team

8/11/2022 2225
 North American 1983 Datum.
 Lat/Long Grid

DIVISIONS