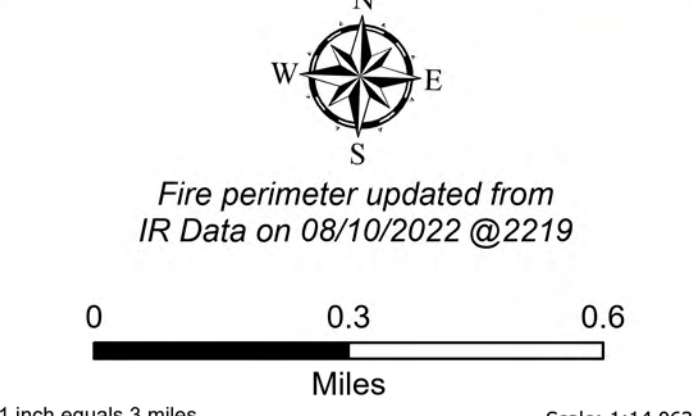
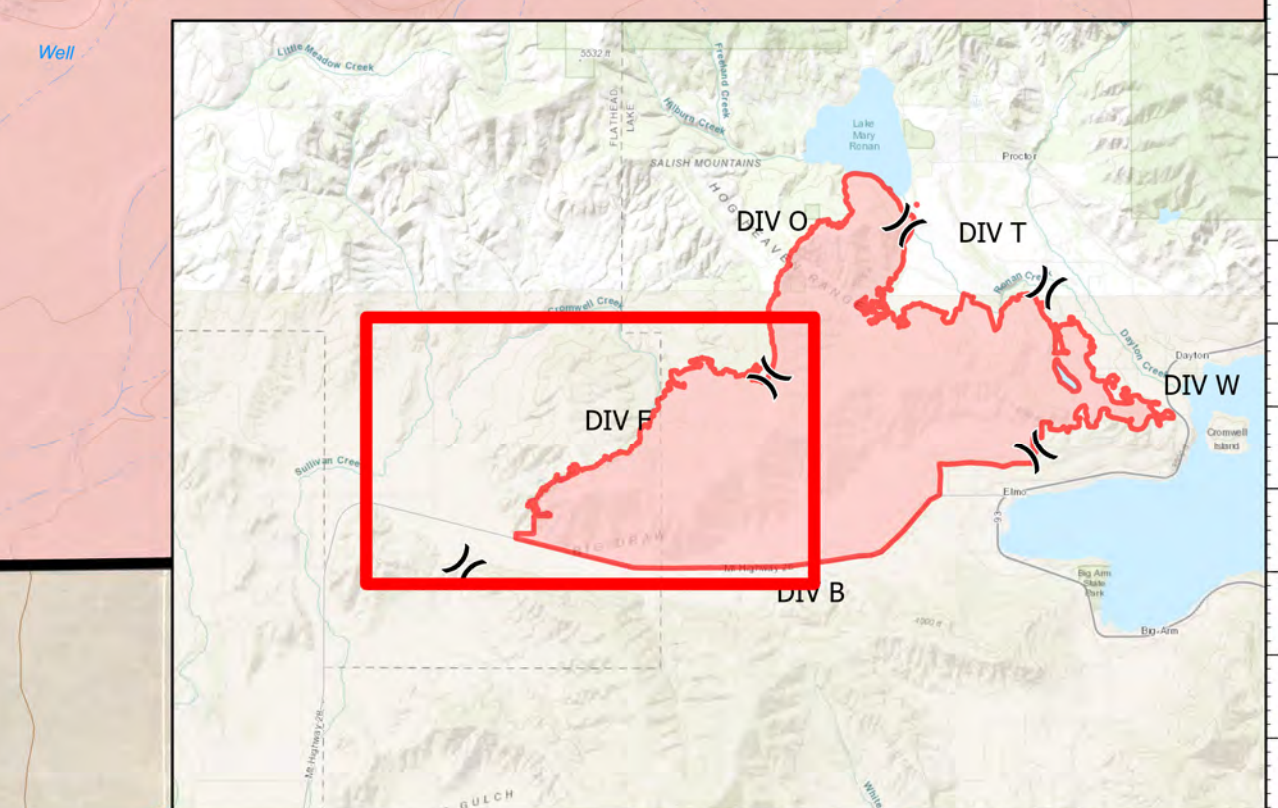


DIV F

Elmo
MTFHA-000106
21,349 acres
08/12/2022



- | | | | | | |
|--|--|---|--|---|---|
| <ul style="list-style-type: none"> ■ Montana Structures X Division Break ■ Drop Point ◆ Repair Point ◆ Dozer Push | <ul style="list-style-type: none"> ◆ Repeater ▲ Hazard ⊙ Water Source XXXX Completed Dozer Line — Completed Hand Line | <ul style="list-style-type: none"> R— Completed Road as Line — Access or Improved Road --- Other — Contained — Uncontained | <ul style="list-style-type: none"> ⊡ Pump ⊡ Water Tank ■ Wildfire Daily Fire Perimeter ~ State Primary Route ~ Dirt (Not Paved) | <ul style="list-style-type: none"> ~ National Designated Trail ▲ Summit; Gap □ Reservation Boundary □ State Boundary ■ County Boundary | <ul style="list-style-type: none"> ■ Individual Trust ■ Tribal ■ Montana State Trust Lands |
|--|--|---|--|---|---|




 Northern Rockies
 Incident Management
 Team



8/11/2022 2208
 North American 1983 Datum.
 Lat/Long Grid

DIVISIONS