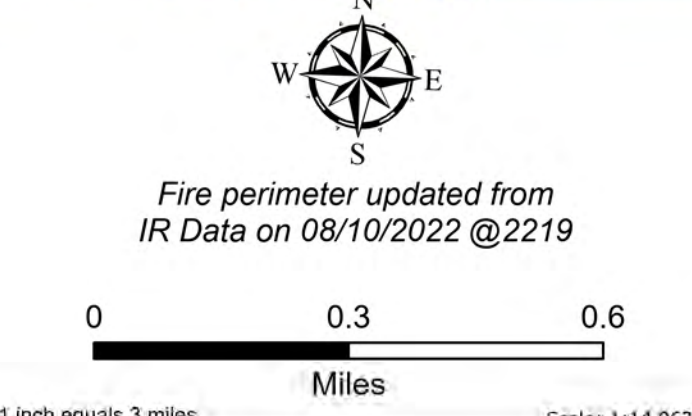
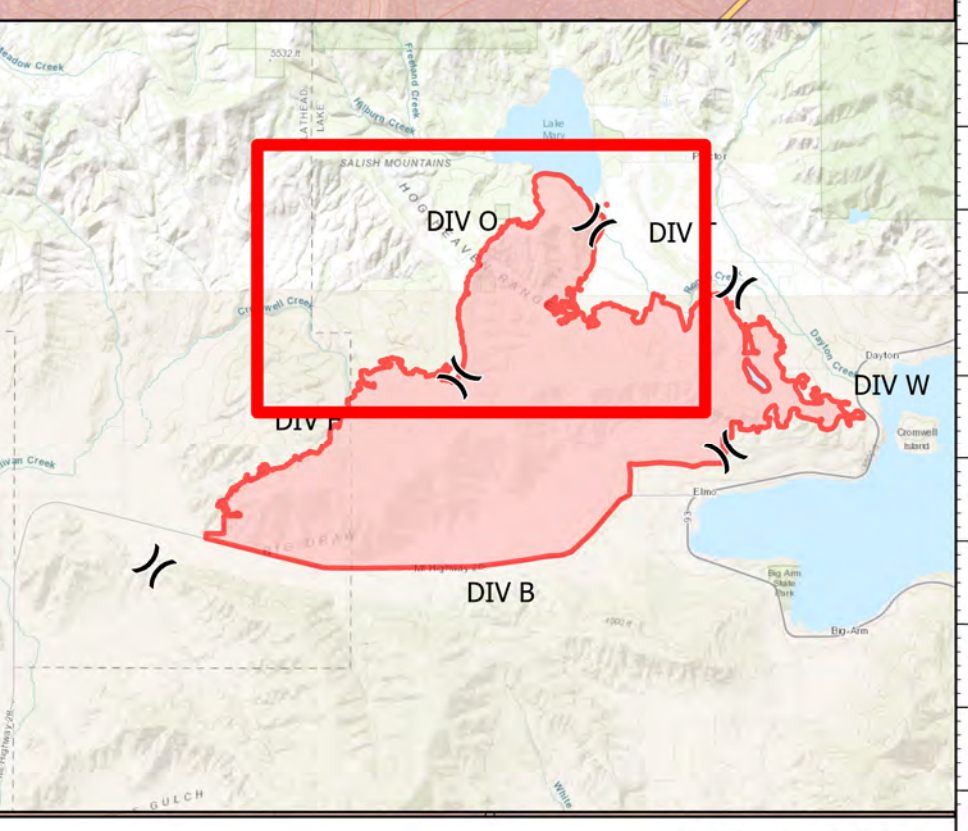


DIV O
 Elmo
 MTFHA-000106
 21,349 acres
 08/12/2022



- | | | | | | |
|--|---|---|--|---|--|
| <ul style="list-style-type: none"> ■ Montana Structures ● Helispot) Division Break ■ Drop Point ⓧ Camp ○ Landmark | <ul style="list-style-type: none"> 🏠 Landing or Log Deck 🚧 Fence - Cut/Damaged 🚧 Dozer Push 📡 Repeater ⚠️ Safety Zone ⚠️ Hazard | <ul style="list-style-type: none"> 🚰 Water Source ⓧ Completed Dozer Line — Completed Hand Line — Completed Mixed Construction Line — Completed Plow Line — Completed Road as Line | <ul style="list-style-type: none"> — Access or Improved Road — Contained — Uncontained 📦 Pump 📦 Water Tank 🔴 Wildfire Daily Fire Perimeter | <ul style="list-style-type: none"> 🛣️ Paved Roads 🛣️ Dirt (Not Paved) 🛣️ State Secondary Route 🛣️ National Designated Trail 🛣️ Reservation Boundary 🛣️ State Boundary | <ul style="list-style-type: none"> 🗺️ County Boundary 🗺️ Individual Trust 🗺️ Tribal 🗺️ Montana Fish, Wildlife, and Parks 🗺️ Montana State Trust Lands |
|--|---|---|--|---|--|



**Northern Rockies
Incident Management
Team**

8/11/2022 2200
North American 1983 Datum.
Lat/Long Grid