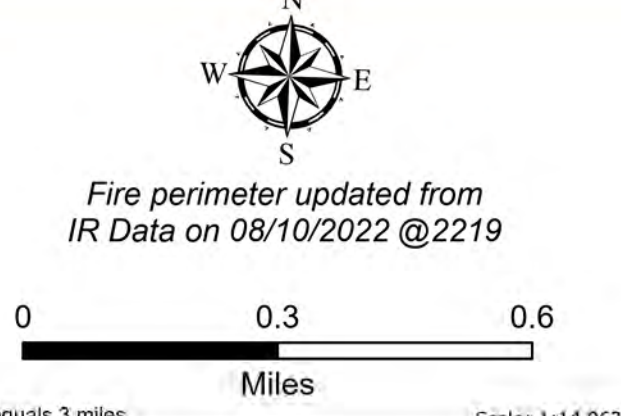
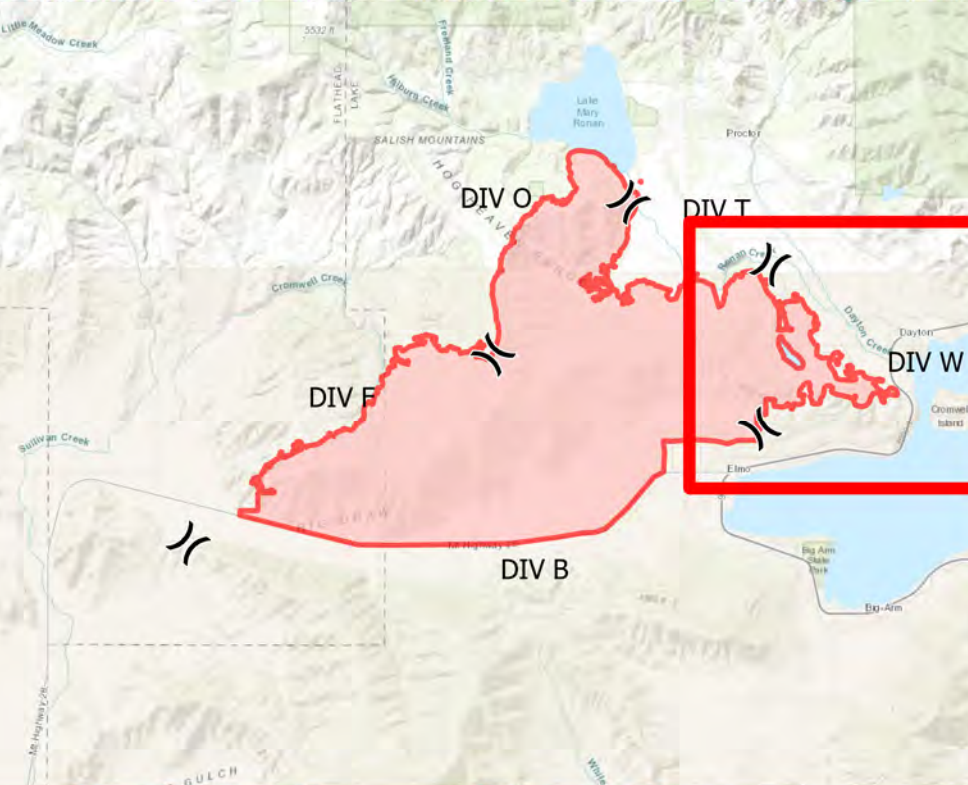


DIV W

Elmo
MTFHA-000106
21,349 acres
08/12/2022



- | | | | | | |
|-----------------------|---------------------------------|---------------------------|-------------------------------------|------------------------------|-----------------------------|
| ■ Montana Structures | ◆ Repeater | — Access or Improved Road | ~ US Primary Route | ⊠ State Boundary | ■ Montana State Trust Lands |
| ● Helispot | ⊕ Water Source | — Contained | ~ State Primary Route | ⊠ County Boundary | |
| ⌘ Division Break | ⊖ Restricted Water Source | — Uncontained | ~ Paved Roads | ⊠ GNIS Populated Places Some | |
| ■ Drop Point | ⊗ Completed Dozer Line | — Completed Plow Line | ~ Dirt (Not Paved) | ⊠ Individual Trust | |
| ● Repair Point | — Completed Road as Line | ⊠ Water Tank | ~ State Secondary Route | ⊠ Tribal | |
| ⊕ Fence - Cut/Damaged | ⊠ Wildfire Daily Fire Perimeter | ⊠ Reservation Boundary | ~ Montana Fish, Wildlife, and Parks | | |



Northern Rockies
Incident Management Team

8/11/2022 2148
North American 1983 Datum.
Lat/Long Grid

DIVISIONS