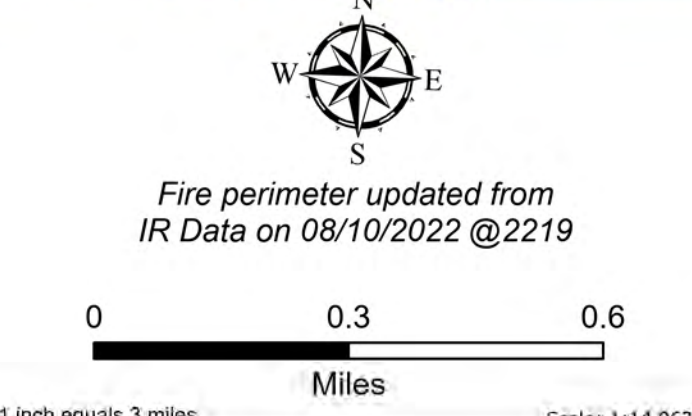
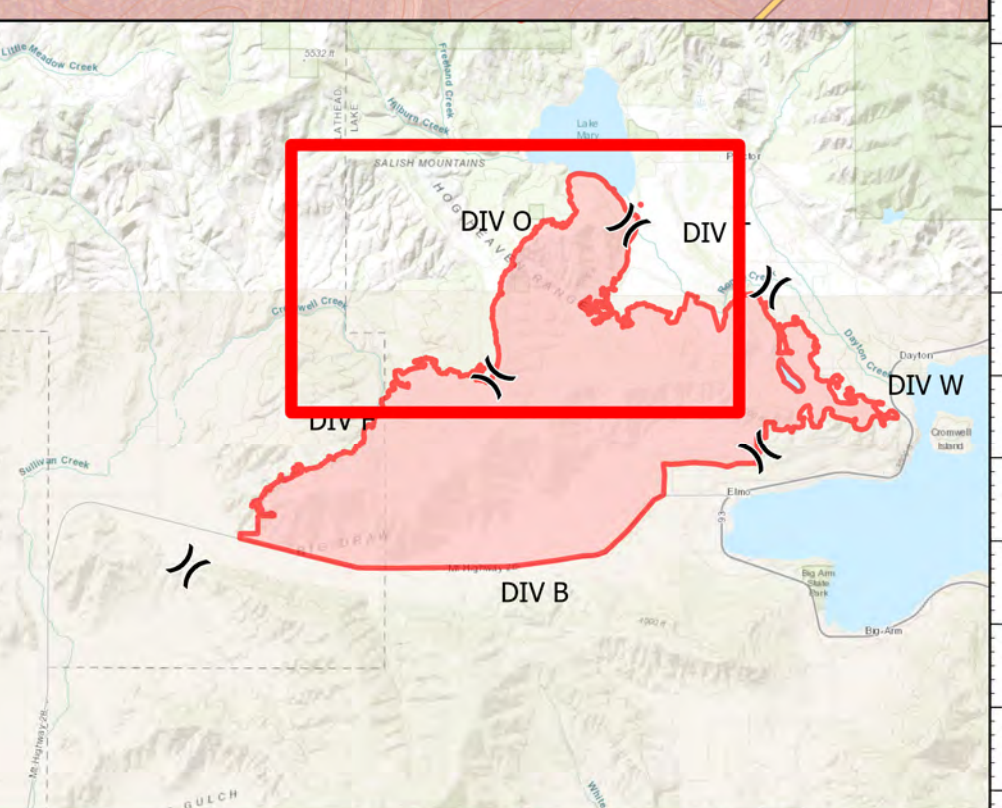


DIV O
 Elmo
 MTFHA-000106
 21,349 acres
 08/14/2022



- | | | | | | |
|--|---|--|--|--|---|
| <ul style="list-style-type: none"> ■ Montana Structures ● Helispot) Division Break ■ Drop Point ▲ Camp ○ Landmark | <ul style="list-style-type: none"> 🌲 Landing or Log Deck 🚧 Fence - Cut/Damaged 🚧 Dozer Push 📡 Repeater ⚠️ Safety Zone ⚠️ Hazard | <ul style="list-style-type: none"> 🌊 Water Source 🛤️ Completed Dozer Line — Completed Hand Line — Completed Mixed Construction Line — Completed Plow Line — Completed Road as Line | <ul style="list-style-type: none"> — Access or Improved Road — Contained — Uncontained 🏠 Other Property 🚰 Pump 🛢️ Water Tank | <ul style="list-style-type: none"> 🔴 Wildfire Daily Fire Perimeter 🛣️ Paved Roads 🛤️ Dirt (Not Paved) 🛣️ State Secondary Route 🛤️ National Designated Trail 🏠 Reservation Boundary | <ul style="list-style-type: none"> — State Boundary 🏠 County Boundary 🏠 Individual Trust 🏠 Tribal 🐟 Montana Fish, Wildlife, and Parks 🏠 Montana State Trust Lands |
|--|---|--|--|--|---|




 Northern Rockies
 Incident Management
 Team


 8/13/2022 0821
 North American 1983 Datum,
 Lat/Long Grid

DIVISIONS