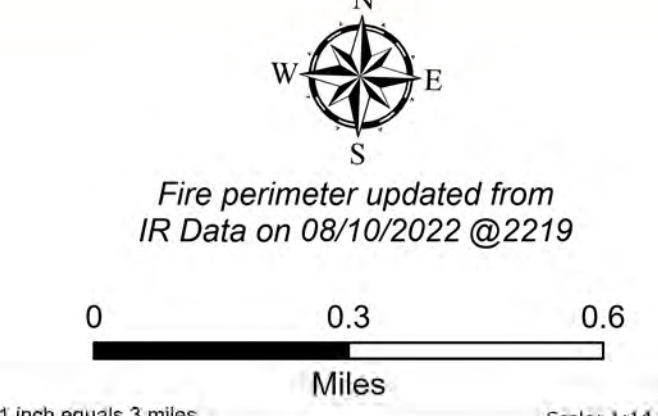
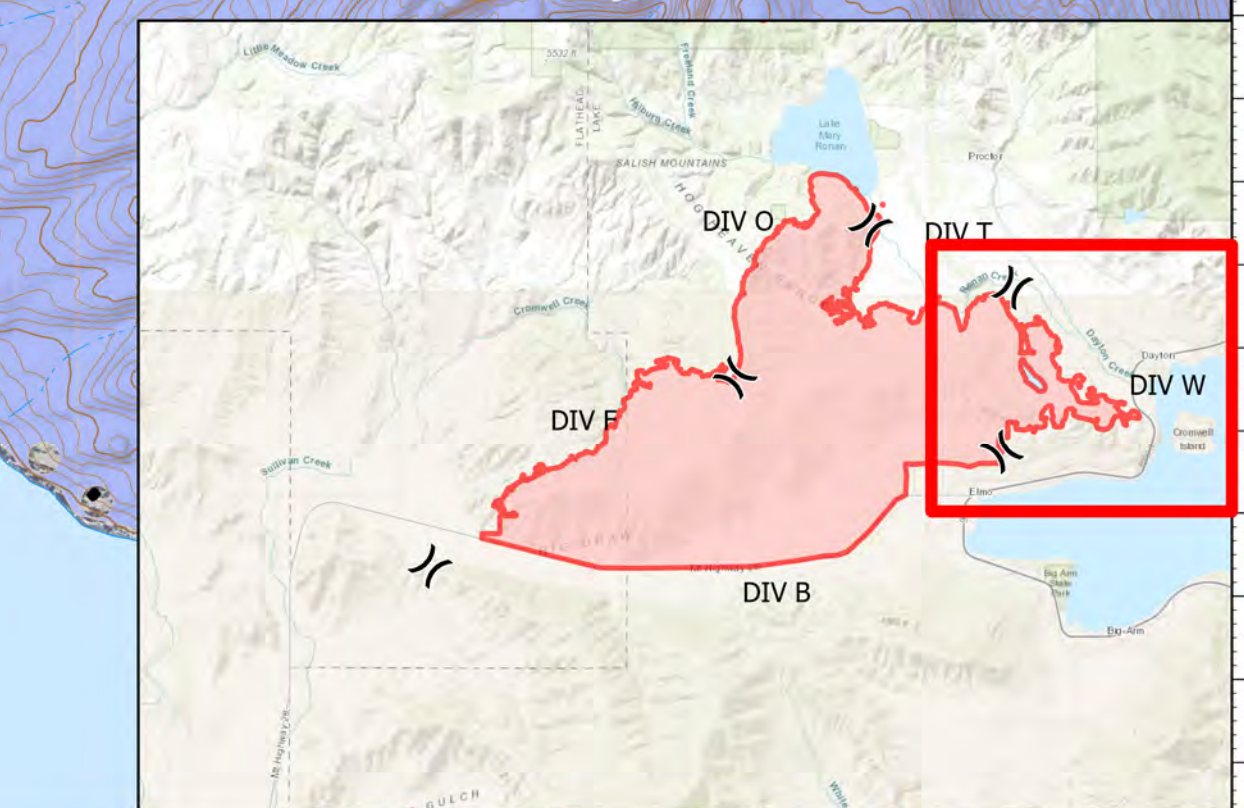


DIV W

Elmo
MTFHA-000106
21,349 acres
08/14/2022



- | | | | | | |
|---------------------|-------------------------|-------------------------|-------------------------------|----------------------------|-----------------------------------|
| Montana Structures | Repeater | Access or Improved Road | Wildfire Daily Fire Perimeter | Reservation Boundary | Montana Fish, Wildlife, and Parks |
| Helispot | Water Source | Highlighted Feature | US Primary Route | State Boundary | Montana State Trust Lands |
| Division Break | Restricted Water Source | Contained | State Primary Route | County Boundary | |
| Drop Point | Completed Dozer Line | Uncontained | Paved Roads | GNIS Populated Places Some | |
| Repair Point | Completed Plow Line | Uncontained | Dirt (Not Paved) | Individual Trust | |
| Fence - Cut/Damaged | Completed Road as Line | Uncontained | State Secondary Route | Tribal | |
| | Pump | | | | |
| | Water Tank | | | | |



8/13/2022 0809
 North American 1983 Datum.
 Lat/Long Grid