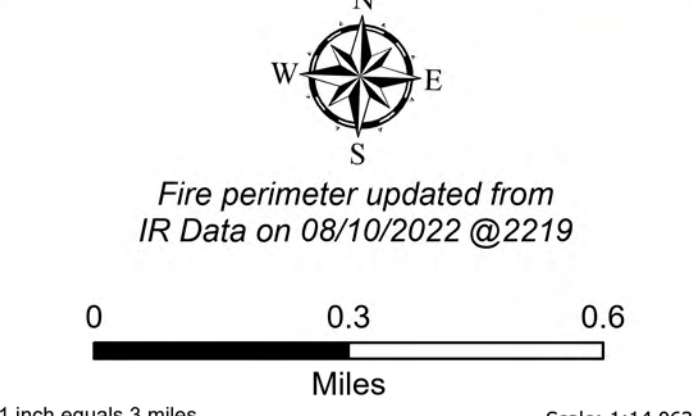


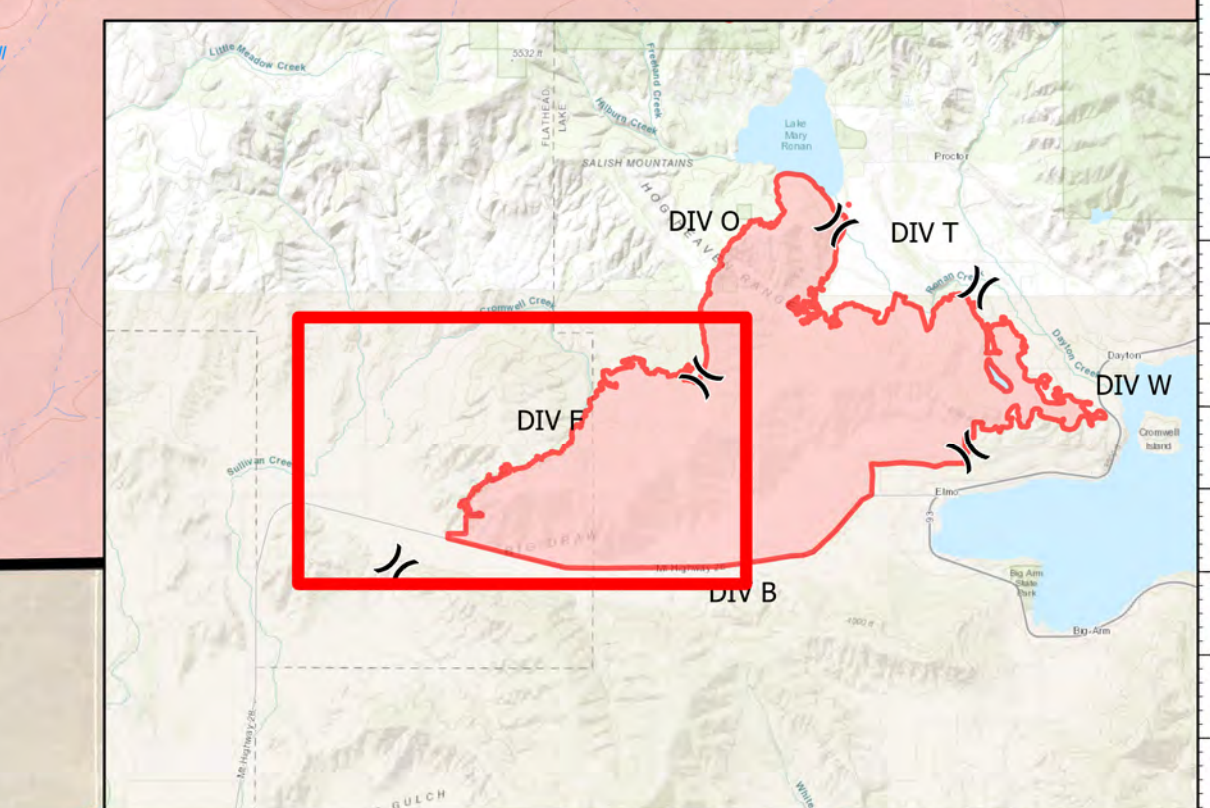
DIV F

Elmo
 MTFHA-000106
 21,349 acres
 08/14/2022



Fire perimeter updated from
 IR Data on 08/10/2022 @2219

- | | | | | | |
|--|--|---|--|--|--|
| <ul style="list-style-type: none"> ■ Montana Structures X Division Break ■ Drop Point ◆ Repair Point ◆ Dozer Push | <ul style="list-style-type: none"> ◆ Repeater ▲ Hazard Ⓜ Water Source XXXX Completed Dozer Line — Completed Hand Line | <ul style="list-style-type: none"> R— Completed Road as Line — Access or Improved Road --- Other — Contained — Uncontained | <ul style="list-style-type: none"> ■ Other Property Ⓜ Pump Ⓜ Water Tank ■ Wildfire Daily Fire Perimeter ~ State Primary Route | <ul style="list-style-type: none"> ~ Dirt (Not Paved) ~ National Designated Trail ▲ Summit; Gap □ Reservation Boundary □ State Boundary | <ul style="list-style-type: none"> ■ County Boundary ■ Individual Trust ■ Tribal ■ Montana State Trust Lands |
|--|--|---|--|--|--|



Northern Rockies
Incident Management
Team

8/13/2022 0755
 North American 1983 Datum.
 Lat/Long Grid