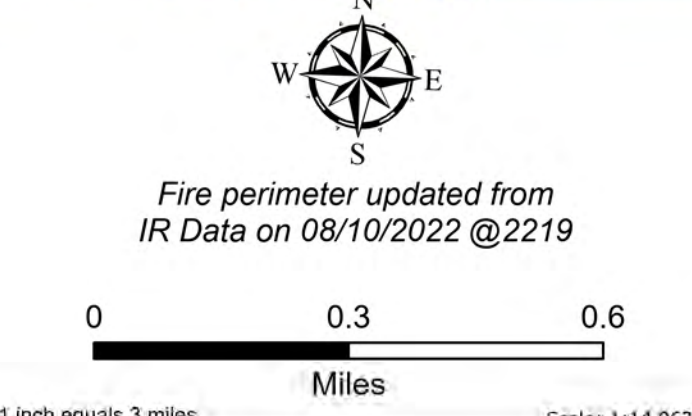
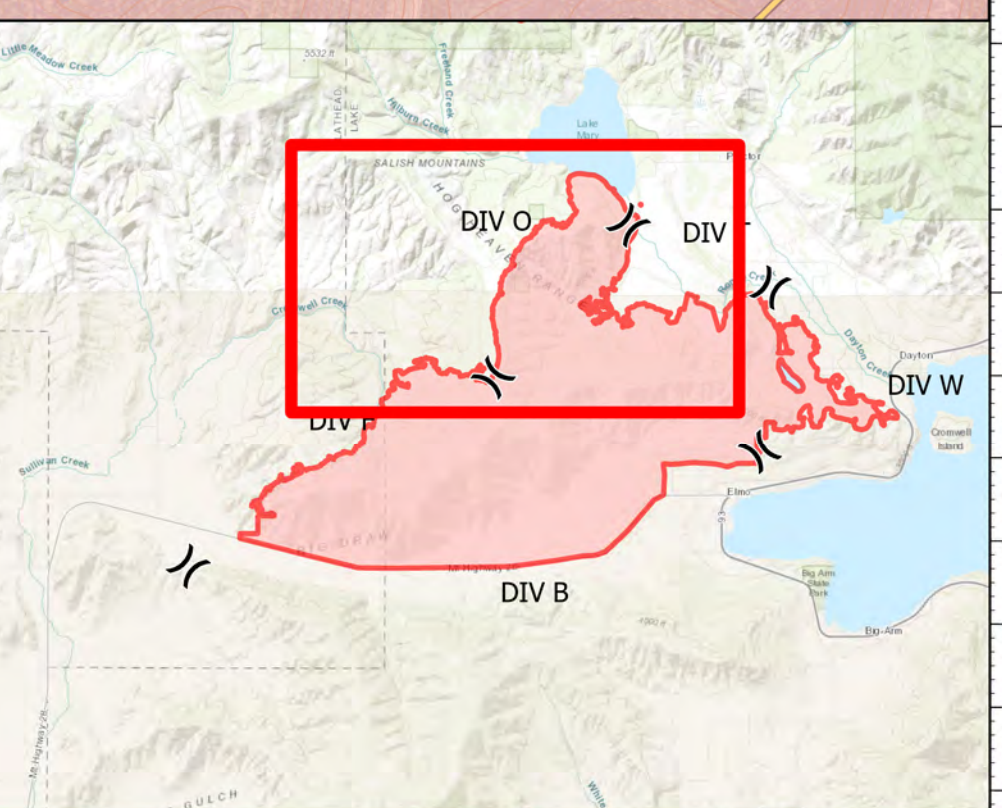


**DIV O**  
 Elmo  
 MTFHA-000106  
 21,349 acres  
 08/14/2022



- |  |   |  |  |   |   |
|--|---|--|--|---|---|
| <ul style="list-style-type: none"> <li>■ Montana Structures</li> <li>● Helispot</li> <li>) Division Break</li> <li>■ Drop Point</li> <li>▲ Camp</li> <li>○ Landmark</li> </ul> | <ul style="list-style-type: none"> <li>🌲 Landing or Log Deck</li> <li>🚧 Fence - Cut/Damaged</li> <li>🚧 Dozer Push</li> <li>📡 Repeater</li> <li>⚠️ Safety Zone</li> <li>⚠️ Hazard</li> </ul> | <ul style="list-style-type: none"> <li>🌊 Water Source</li> <li>🛣️ Completed Dozer Line</li> <li>— Completed Hand Line</li> <li>— Completed Mixed Construction Line</li> <li>— Completed Plow Line</li> <li>— Completed Road as Line</li> </ul> | <ul style="list-style-type: none"> <li>— Access or Improved Road</li> <li>— Contained</li> <li>— Uncontained</li> <li>🏠 Other Property</li> <li>🚰 Pump</li> <li>🛢️ Water Tank</li> </ul> | <ul style="list-style-type: none"> <li>🔴 Wildfire Daily Fire Perimeter</li> <li>🛣️ Paved Roads</li> <li>🛣️ Dirt (Not Paved)</li> <li>🛣️ State Secondary Route</li> <li>🛣️ National Designated Trail</li> <li>🛣️ Reservation Boundary</li> </ul> | <ul style="list-style-type: none"> <li>— State Boundary</li> <li>🏠 County Boundary</li> <li>🏠 Individual Trust</li> <li>🏠 Tribal</li> <li>🐟 Montana Fish, Wildlife, and Parks</li> <li>🌊 Montana State Trust Lands</li> </ul> |
|--|---|--|--|---|---|



  
 Northern Rockies  
 Incident Management  
 Team

  
 8/13/2022 0749  
 North American 1983 Datum,  
 Lat/Long Grid

DIVISIONS