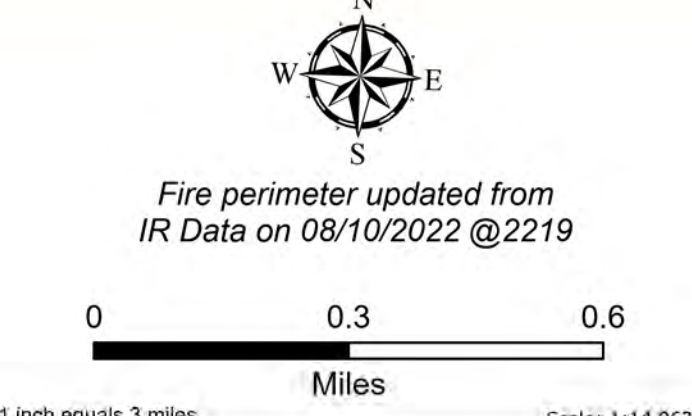
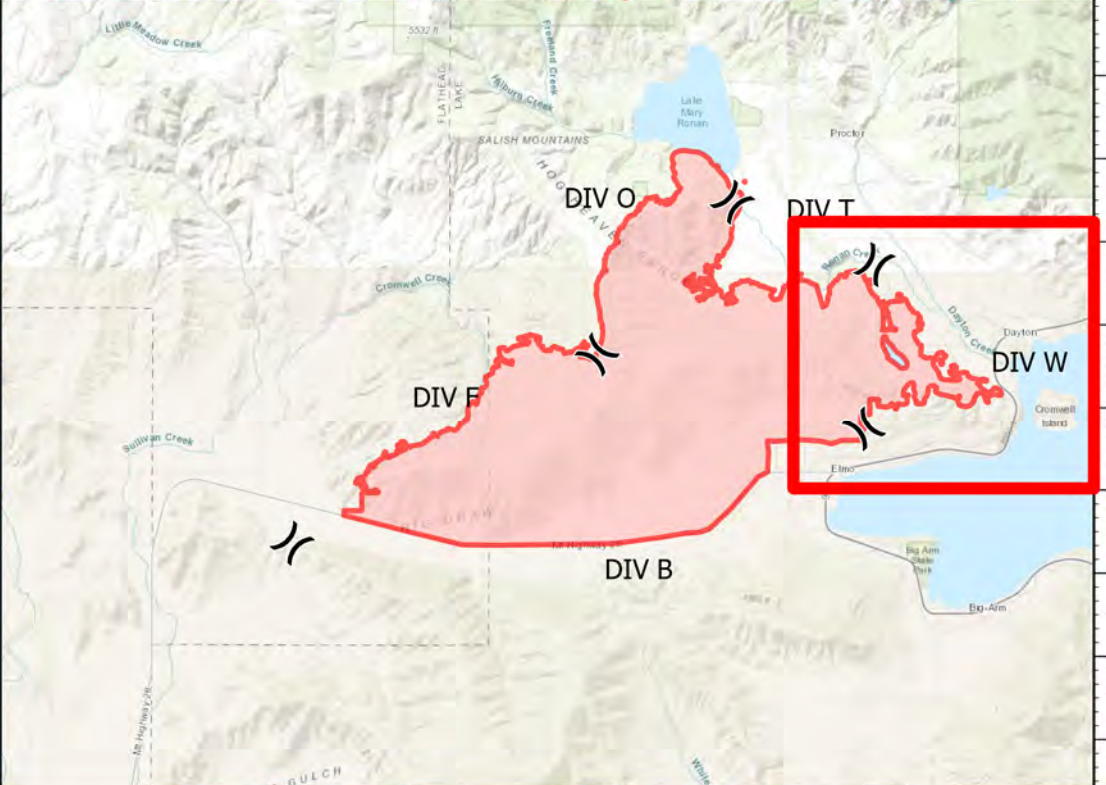


DIV W

Elmo
MTFHA-000106
21,349 acres
08/14/2022



- | | | | | | |
|-----------------------|---------------------------|---------------------------|---------------------------------|------------------------------|-------------------------------------|
| ■ Montana Structures | ◆ Repeater | — Access or Improved Road | ■ Wildfire Daily Fire Perimeter | □ Reservation Boundary | ■ Montana Fish, Wildlife, and Parks |
| ● Helispot | Ⓜ Water Source | — Highlighted Feature | — US Primary Route | — State Boundary | ■ Montana State Trust Lands |
| ⓧ Division Break | Ⓜ Restricted Water Source | — Contained | — State Primary Route | — County Boundary | |
| ■ Drop Point | Ⓜ Completed Dozer Line | — Uncontained | — Paved Roads | — GNIS Populated Places Some | |
| ● Repair Point | — Completed Plow Line | | — Dirt (Not Paved) | ■ Individual Trust | |
| ● Fence - Cut/Damaged | — Completed Road as Line | ■ Pump | — State Secondary Route | ■ Tribal | |
| | | ■ Water Tank | | | |



Northern Rockies
Incident Management Team

8/13/2022 0740
North American 1983 Datum.
Lat/Long Grid

Vertical coordinate and longitude data labels along the right edge of the map.