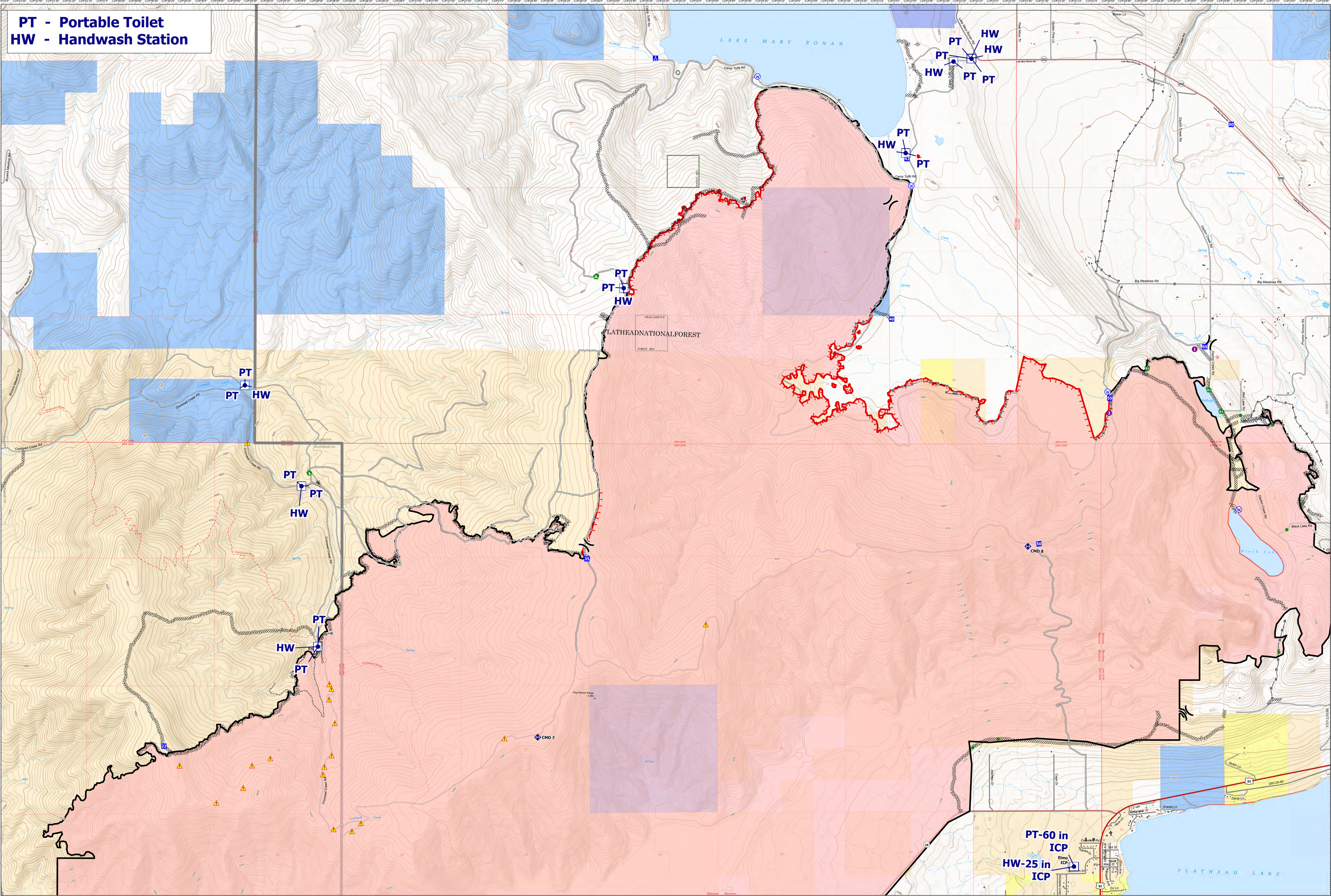
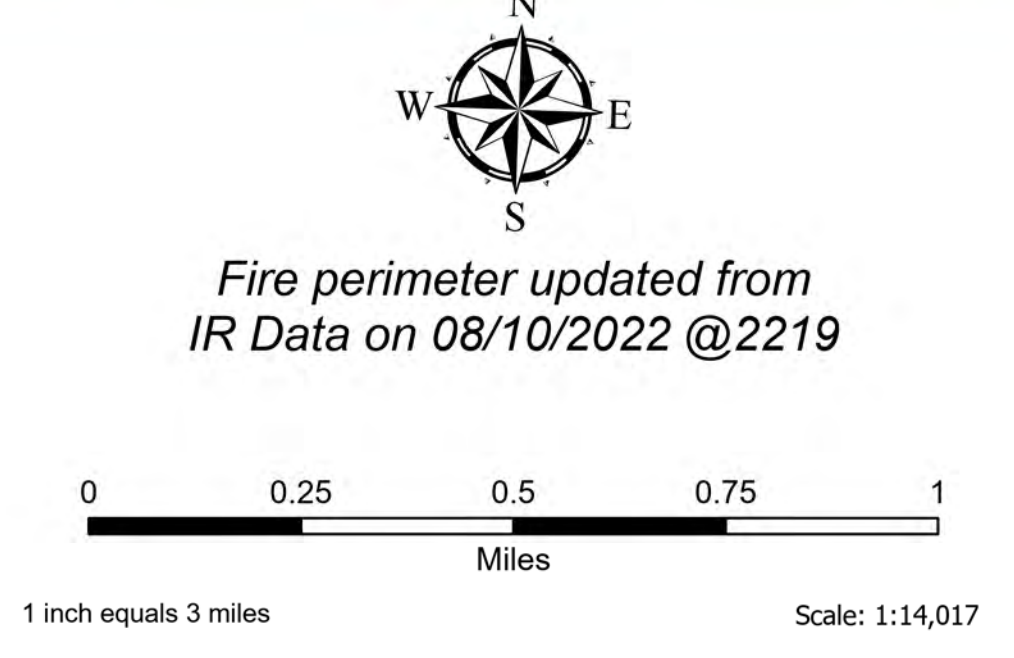


PT - Portable Toilet
HW - Handwash Station



Portable Toilets & Handwash Stations

Elmo
 MTFHA-000106
 21,349 acres
 08/14/2022



- | | | | | | | |
|--|---|---|--|---|--|--|
| <ul style="list-style-type: none"> ■ Montana Structures ● Helispot ✕ Division Break ■ Incident Command Post ■ Drop Point ■ Camp ● Repeater ● Hot Spot - Spot Fire ● Other | <ul style="list-style-type: none"> ○ Landmark ● Repair Point ✕ Landing or Log Deck ● Fence - Cut/Damaged ● Dozer Push ● Administrative FS Boundary ● Safety Zone ● Hazard | <ul style="list-style-type: none"> ● Water Source ● Restricted Water Source ✕ Completed Dozer Line — Completed Hand Line — Completed Mixed Construction Line — Completed Plow Line — Completed Road as Line — Access or Improved Road | <ul style="list-style-type: none"> --- Other — Wildfire Daily Fire Perimeter — US Primary Route — State Primary Route — State Secondary Route — Unimproved Road — Administrative FS Boundary ● Accountable Property — Contained | <ul style="list-style-type: none"> — Uncontained — Reservation Boundary — National Designated Trail — State Secondary Route — Paved Roads — Dirt (Not Paved) — Spring/Seep — Well | <ul style="list-style-type: none"> ● Lake / Pond ● Lake / Pond (Intermittent) — Stream/River; Artificial Path — Stream/River Intermittent — Township — Section — Parcels — Montana Fish, Wildlife, and Parks | <ul style="list-style-type: none"> ■ Montana State Trust Lands ■ US Government ■ Individual Trust ■ Tribal |
|--|---|---|--|---|--|--|



8/13/2022 0803
 North American 1983 Datum,
 Lat/Long Grid

Portable Toilet and Hand Wash Stations