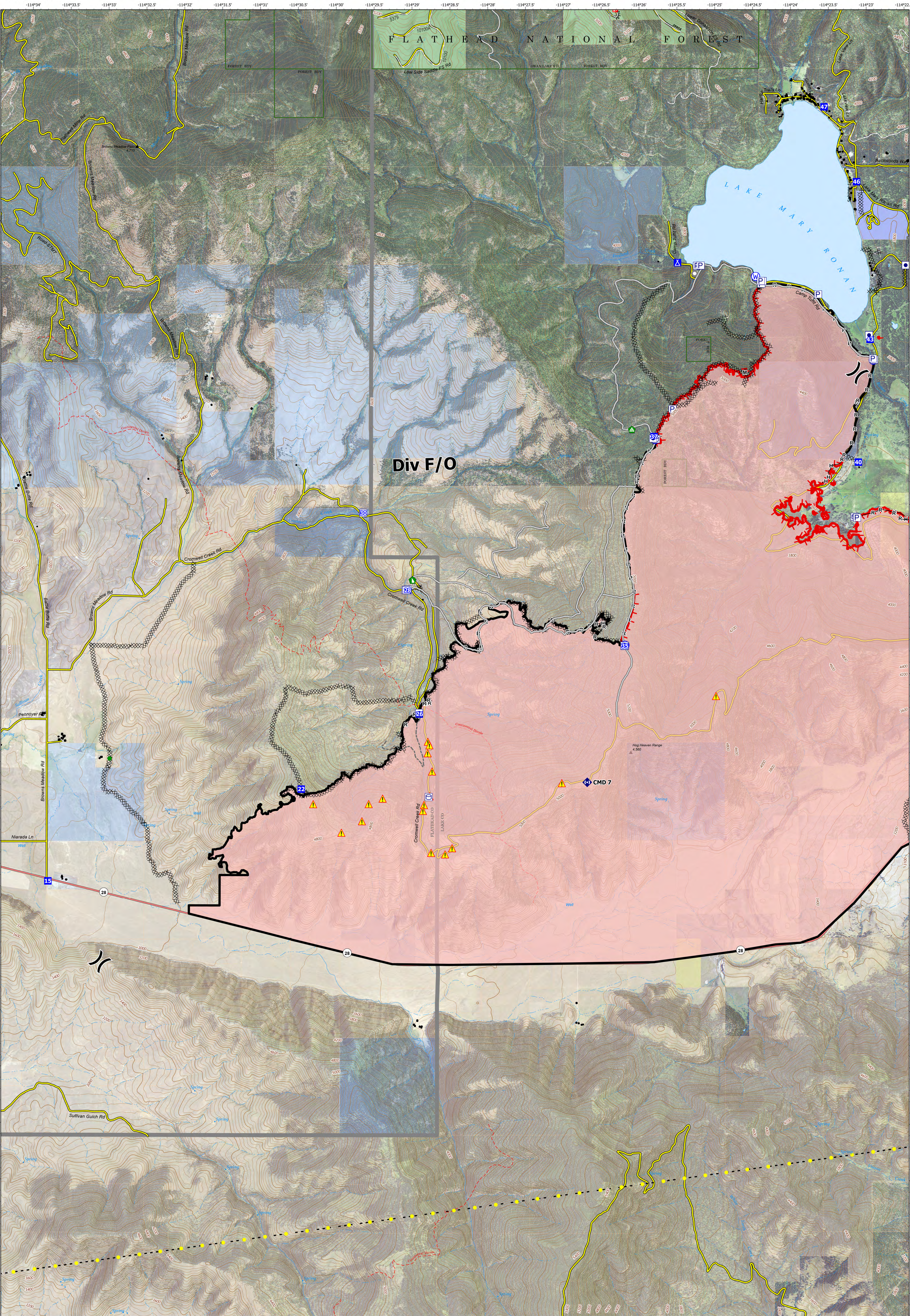


# DIV F/O



**Elmo**  
**MTFHA-000106**  
 Fire Perimeter as of  
 08/13/2022 @0013 hrs  
 21,349 Acres

<ul style="list-style-type: none"> <li> Reservation Boundary</li> <li> Montana Structures</li> <li> Primary Highways</li> <li> State Primary Route</li> <li> Forest Service Roads Open</li> <li> Dirt Road</li> </ul>	<ul style="list-style-type: none"> <li> Unimproved Road</li> <li> Forest Service Roads Closed</li> <li><b>Roads</b></li> <li> Paved Roads</li> <li> Dirt (Not Paved)</li> <li> County Boundary</li> </ul>	<ul style="list-style-type: none"> <li><b>PublicLands</b></li> <li> Montana Fish, Wildlife, and Parks</li> <li> Montana State Trust Lands</li> <li> US Forest Service</li> <li><b>CSKT_Ownership</b></li> <li> Individual Trust</li> </ul>	<ul style="list-style-type: none"> <li> Label Point</li> <li> Division Break</li> <li> Drop Point</li> </ul>	<ul style="list-style-type: none"> <li> Camp</li> <li> Landmark</li> <li> Repair Point</li> <li> Landing or Log Deck</li> <li> Dozer Push</li> <li> Repeater</li> </ul>	<ul style="list-style-type: none"> <li> Safety Zone</li> <li> Hazard</li> <li> Water Source</li> <li><b>Event Line</b></li> <li> Completed Dozer Line</li> <li> Completed Hand Line</li> </ul>	<ul style="list-style-type: none"> <li> Completed Mixed Construction Line</li> <li> Completed Road as Line</li> <li> Access or Improved Road</li> <li> Highlighted Feature</li> <li> Other</li> <li><b>Perimeter Line</b></li> <li> Contained</li> <li> Uncontained</li> <li><b>Event Polygon</b></li> <li> Wildfire Daily Fire Polygon</li> </ul>
---	---	--	--	---	--	--

