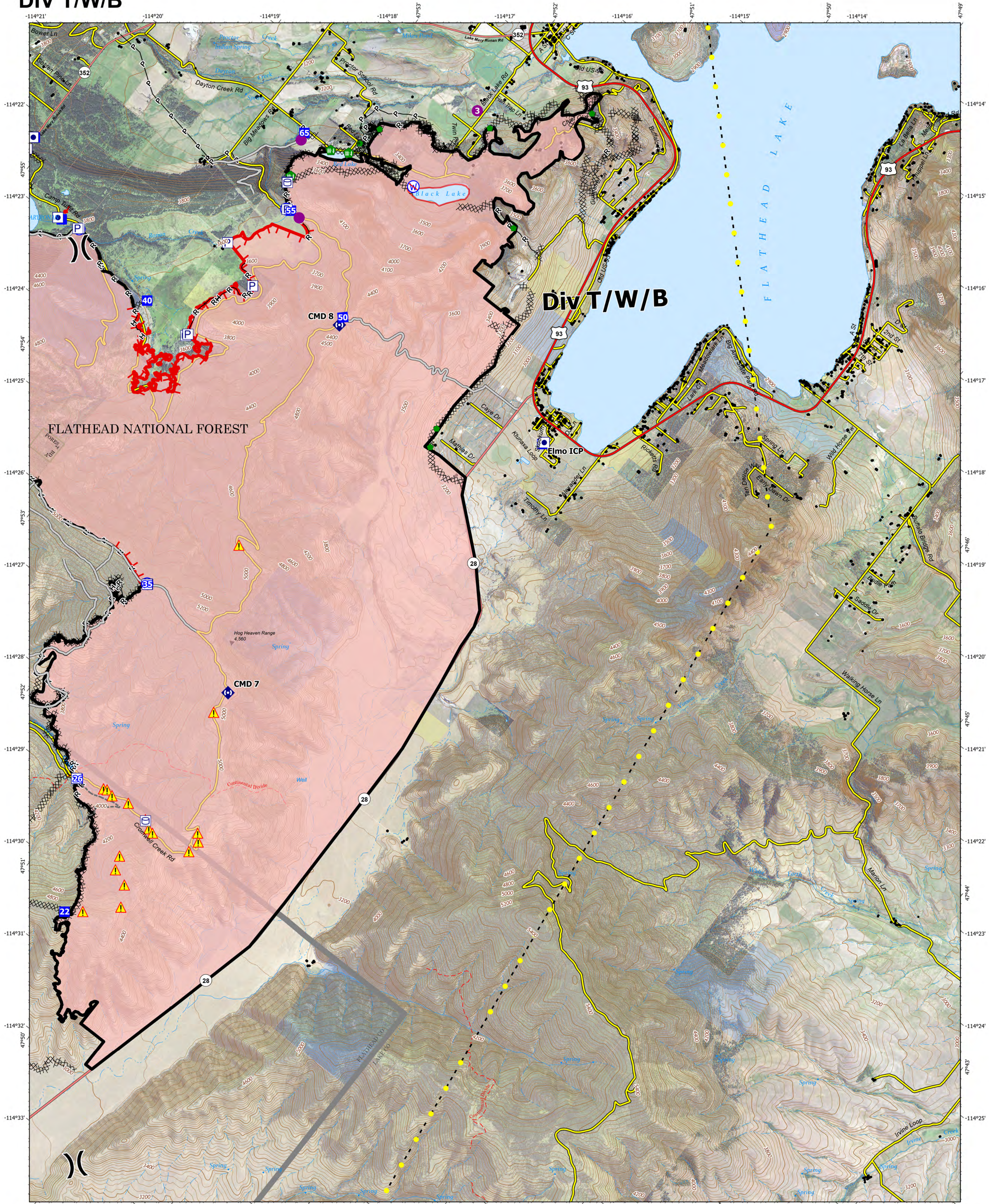


# DIV T/W/B



**Elmo**  
**MTFHA-000106**  
 Fire Perimeter as of  
 08/13/2022 @0013 hrs  
 21,349 Acres

**Event Point**  
 ● Helispot  
 ○ Division Break  
 □ Incident Command Post

● Drop Point  
 ● Repair Point  
 ● Fence - Cut/Damaged  
 ● Repeater  
 ● Hazard

○ Water Source  
 ○ Restricted Water Source

**Event Line**  
 X Completed Dozer Line  
 H Completed Hand Line  
 P Completed Plow Line

**R** Completed Road as Line  
 Access or Improved Road  
 Highlighted Feature  
 Other

**Perimeter Line**  
 Contained  
 Uncontained

**Event Polygon**  
 Wildfire Daily Fire Perimeter  
 Reservation Boundary  
 Montana Structures

**Primary Highways**  
 US Primary Route  
 State Primary Route

**Secondary Highways**  
 State Secondary Route

**Roads**  
 Paved Roads  
 Dirt (Not Paved)  
 Other Designated Boundary  
 County Boundary

**Public Lands**  
 Montana Fish, Wildlife, and Parks  
 Montana State Trust Lands

**CSKT\_Ownership**  
 Individual Trust  
 Tribal

0.5 1 Miles

Northern Rockies  
Incident Management Team