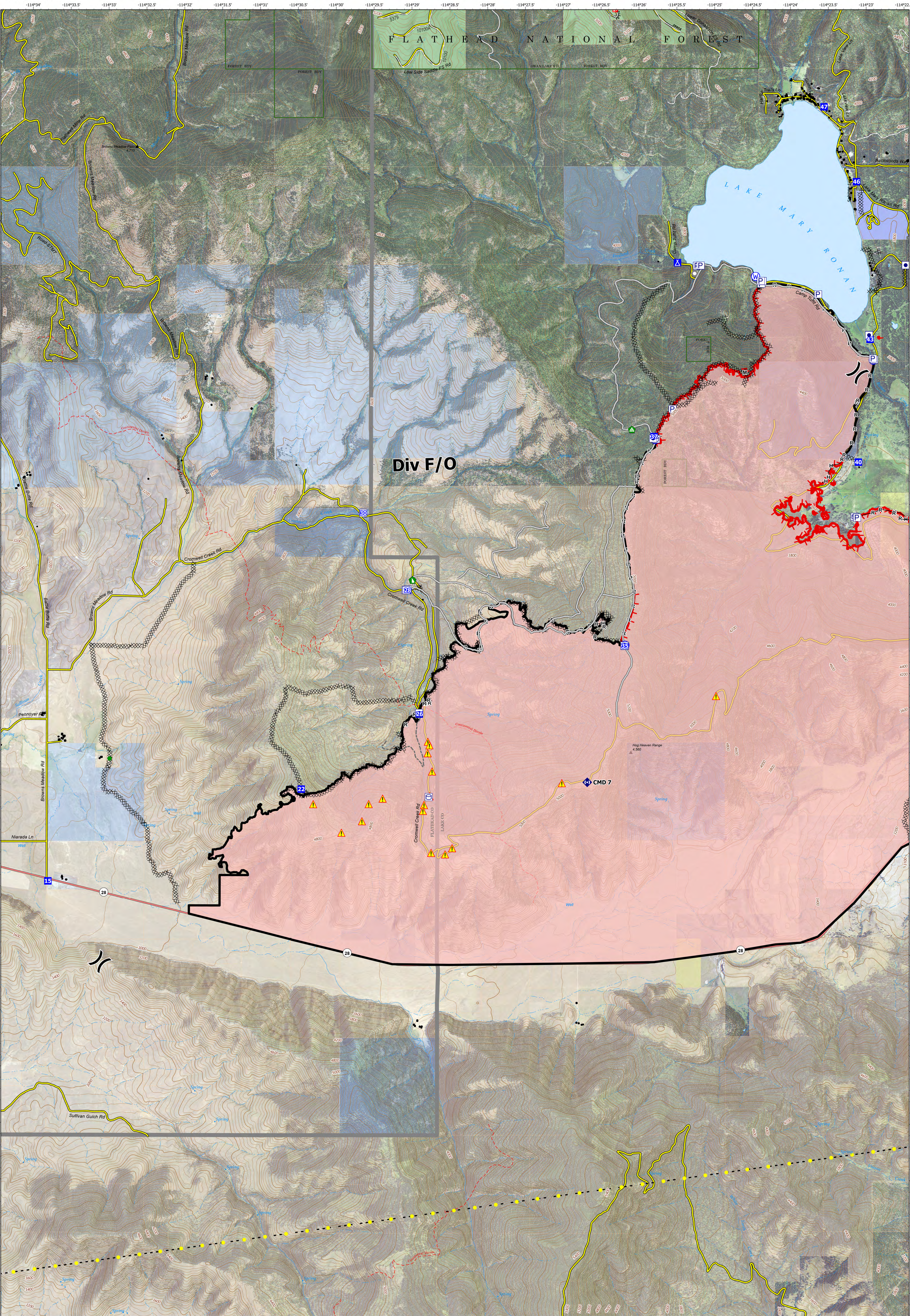


DIV F/O



Elmo
MTFHA-000106
 Fire Perimeter as of
 08/13/2022 @0013 hrs
 21,349 Acres

<ul style="list-style-type: none"> Reservation Boundary Montana Structures Primary Highways State Primary Route Forest Service Roads Open Dirt Road 	<ul style="list-style-type: none"> Unimproved Road Forest Service Roads Closed Roads Paved Roads Dirt (Not Paved) County Boundary 	<ul style="list-style-type: none"> PublicLands Montana Fish, Wildlife, and Parks Montana State Trust Lands US Forest Service CSKT_Ownership Individual Trust 	<ul style="list-style-type: none"> Label Point Division Break Drop Point 	<ul style="list-style-type: none"> Camp Landmark Repair Point Landing or Log Deck Dozer Push Repeater 	<ul style="list-style-type: none"> Safety Zone Hazard Water Source Event Line Completed Dozer Line Completed Hand Line 	<ul style="list-style-type: none"> Completed Mixed Construction Line Completed Road as Line Access or Improved Road Highlighted Feature Other Perimeter Line Contained Uncontained Event Polygon Wildfire Daily Fire Polygon
---	---	--	--	---	--	--

