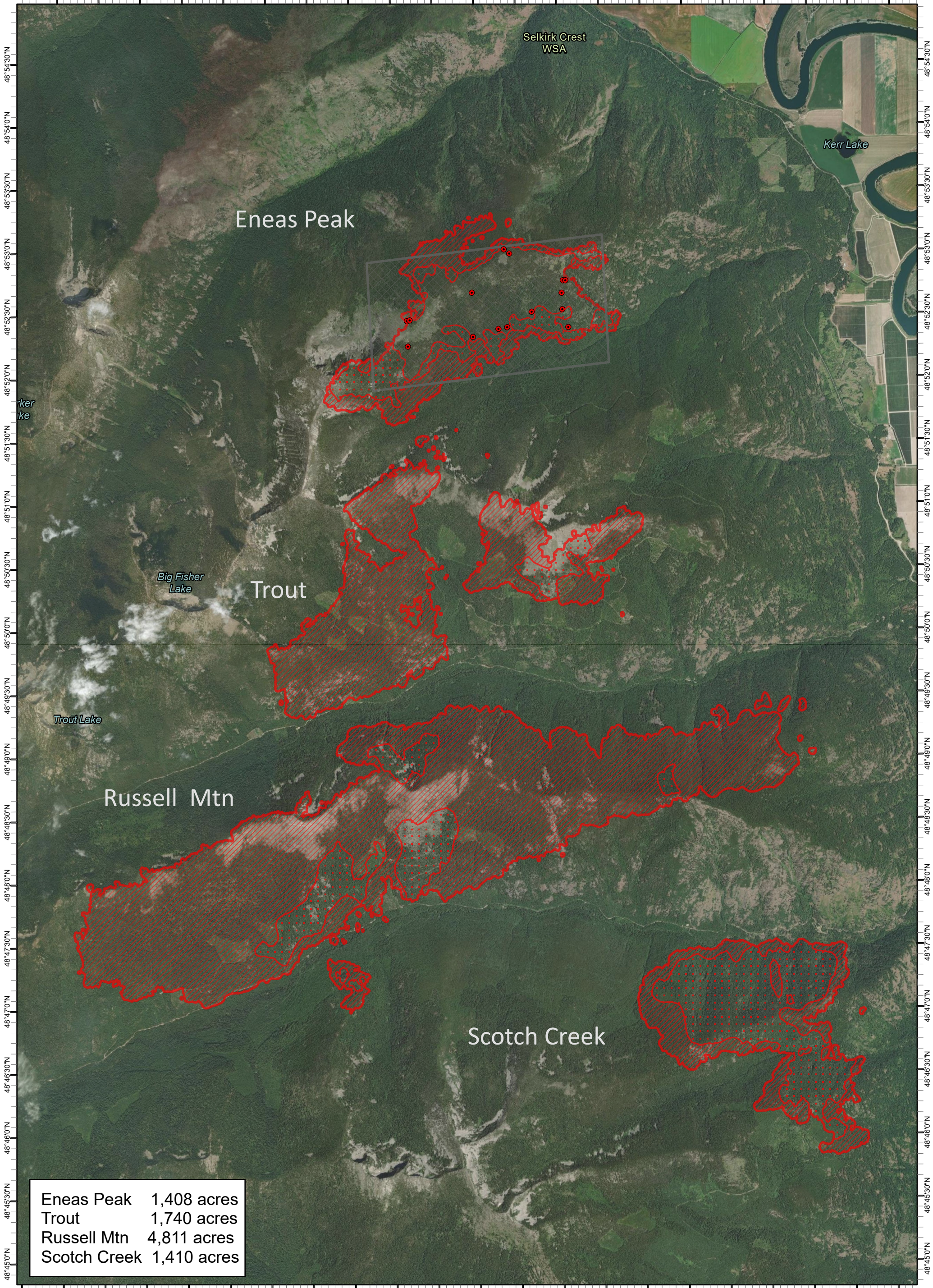


116°35'30"W 116°35'0"W 116°34'30"W 116°34'0"W 116°33'30"W 116°33'0"W 116°32'30"W 116°32'0"W 116°31'30"W 116°31'0"W 116°30'30"W 116°30'0"W 116°29'30"W 116°29'0"W 116°28'30"W 116°28'0"W 116°27'30"W 116°27'0"W 116°26'30"W 116°26'0"W 116°25'30"W



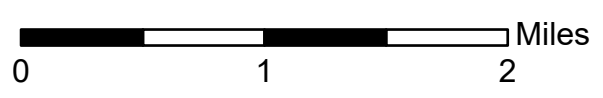
Eneas Peak	1,408 acres
Trout	1,740 acres
Russell Mtn	4,811 acres
Scotch Creek	1,410 acres

Eneas Peak / Trout / Russell Mtn / Scotch Creek

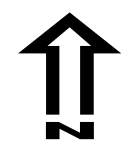
ID-IPF-000385
Infrared Map

09/03/2022 21:44 hrs PDT

- IR Isolated Heat Source
- IR Heat Perimeter
- IR Intense Heat
- IR Scattered Heat
- Cloud Cover



UTM Zone 11 NAD83



Print Date: 09/04/2022
IRIN: Elsa Hucks