

116°32'30"W

116°30'0"W

48°52'30"N

48°52'30"N

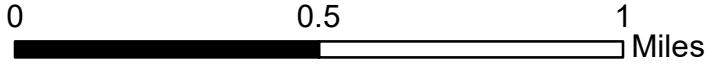

116°32'30"W

116°30'0"W





**Eneas Peak Infrared Map**  
**ID-IPF-000385**

Infrared Map: 08/20/2022  
 Imagery Date: 08/19/2022  
 Imagery Time: 2150 MDT  
 Interpreted Total Acres: 536  
 IRIN: Pete Martinez

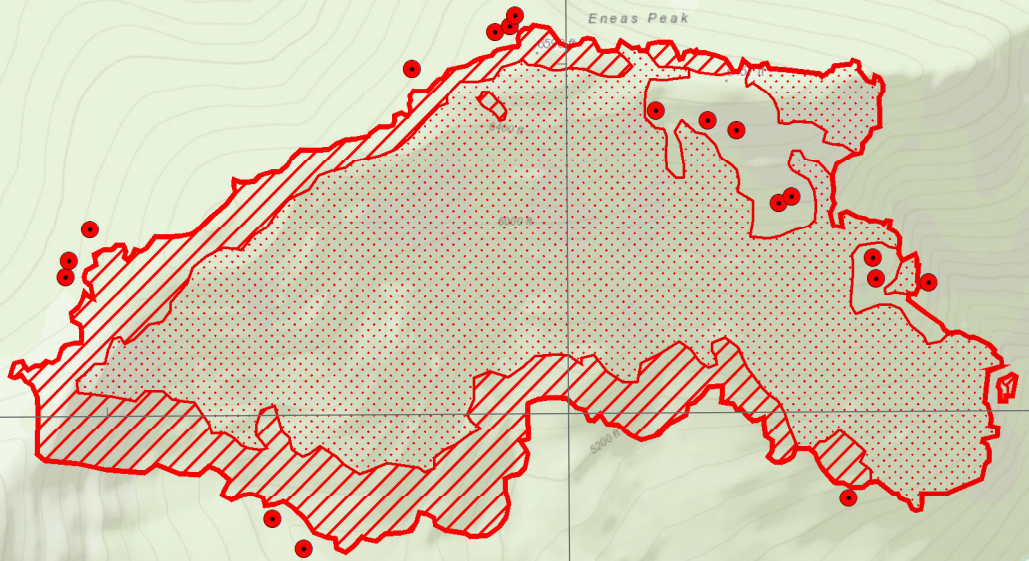
0 0.5 1 Miles

N

-  Isolated Heat
-  Intense Heat
-  Scattered Heat
-  Heat Perimeter

NAD\_1983\_UTM\_Zone\_11N



Sources: Esri, HERE, Garmin, Intermap, increment P Corp., GEBCO, USGS, FAO, NPS, NRCAN, GeoBase, IGN,