

# Operations

Eneas Peak  
IDIPF\_NR\_RIST  
599 acres  
8/21/2022

Fire perimeter updated from  
Acres from IR on 08/20/2022 2231

- Helispot
- Drop Point
- Staging Area
- Ⓢ Value at Risk
- Ⓜ Gate
- Ⓜ Water Source
- Planned Dozer Line
- Planned Mixed Construction Line
- Access or Improved Road
- Water Drop
- Uncontained
- Wildfire Daily Fire Perimeter
- IR Intense Heat
- IR Scattered Heat
- State Primary Route
- Unimproved Road
- Forest Service Roads Closed
- Trail
- Administrative FS Boundary
- USFS Roadless Areas
- Forest Service Land

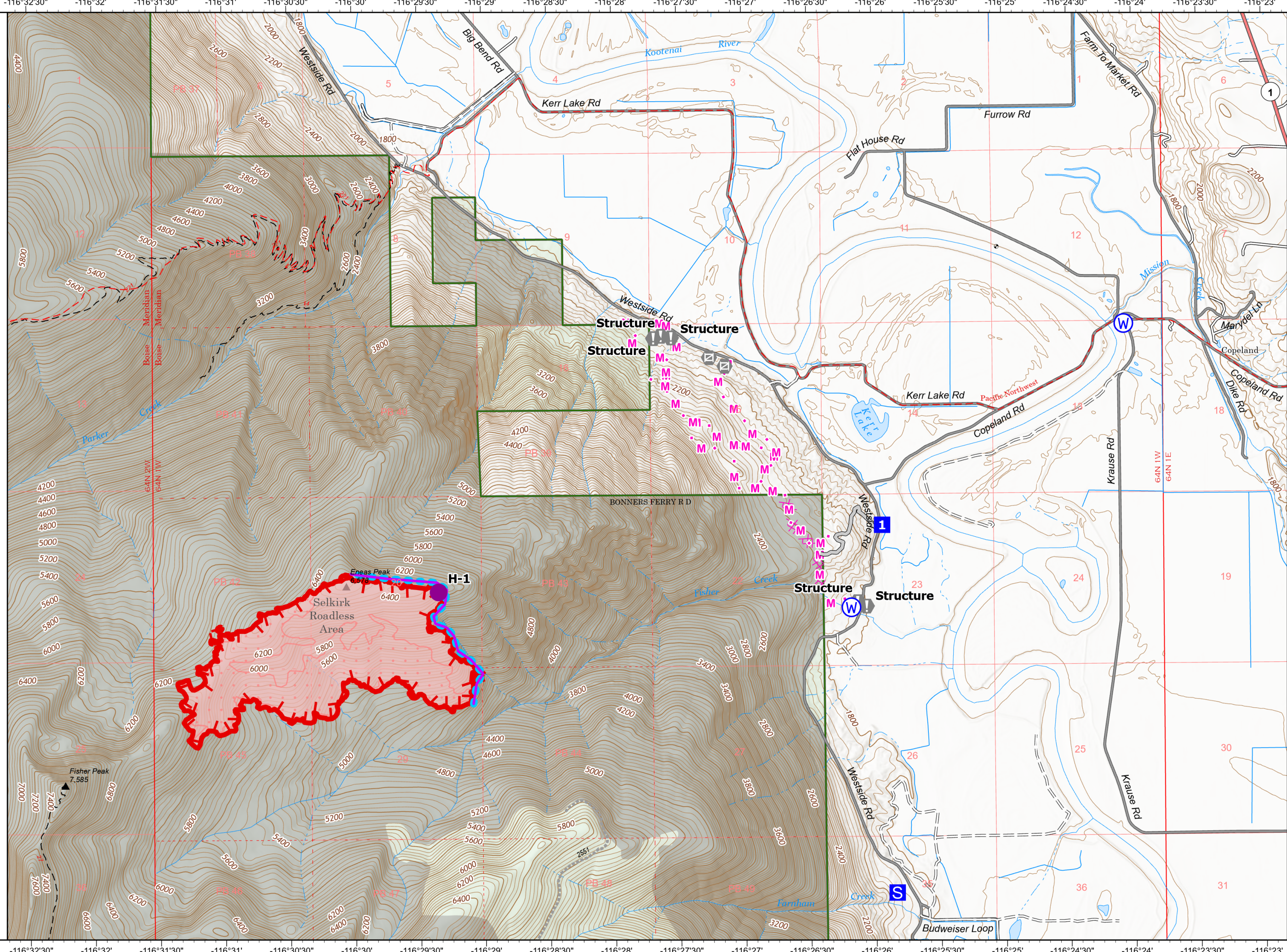


0 0.3 0.6  
Miles

Scale: 1:32,660



NR Remote Incident  
Support  
8/21/2022 1119  
North American 1983  
Datum: LattLong Grid



Operations