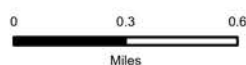


Operations

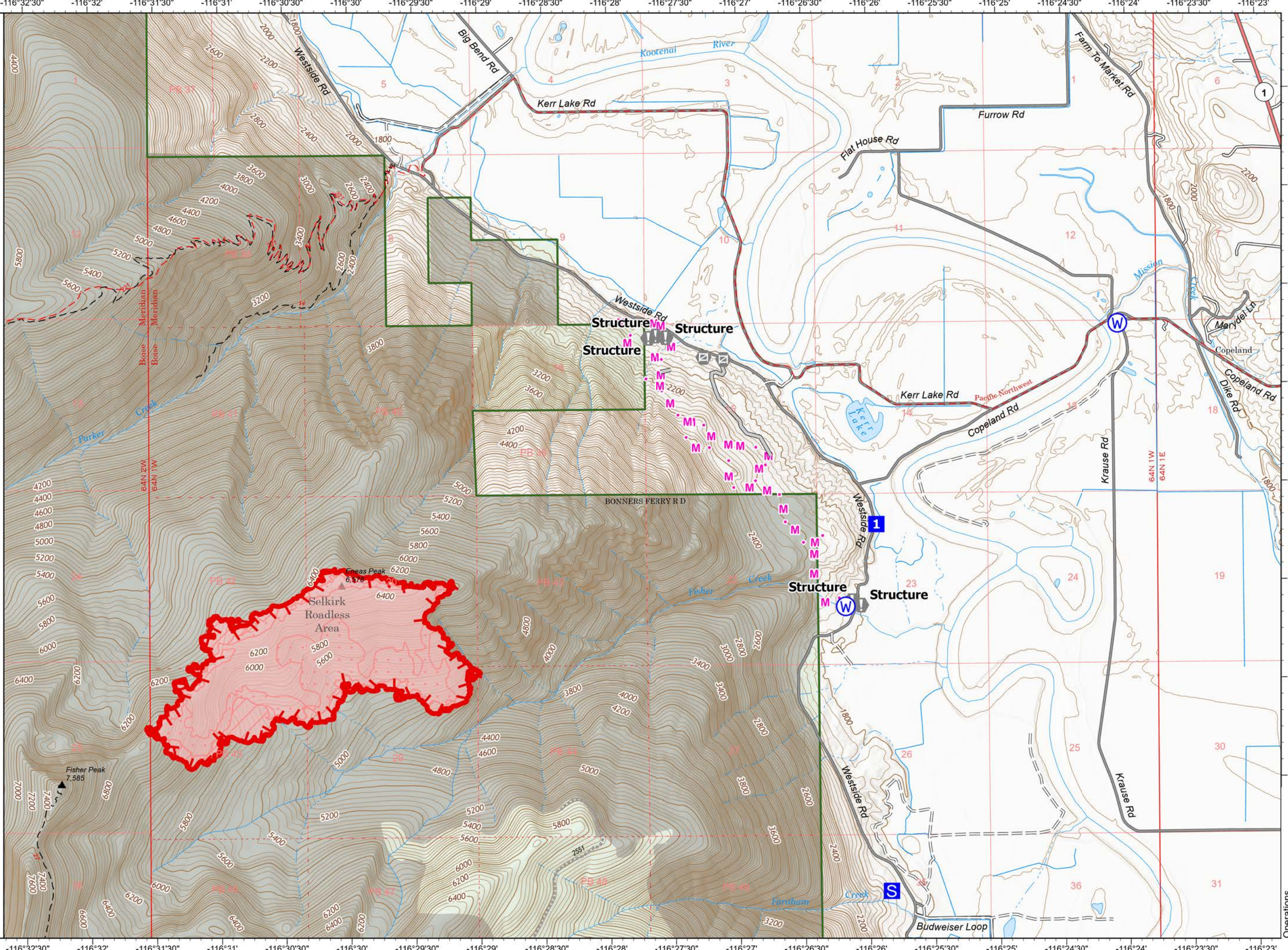
Eneas Peak
IDIPF_NR_RIST
733 acres
8/23/2022

Fire perimeter updated from
Updates from IR on 08/22/2022 2114

- Drop Point
- Staging Area
- Value at Risk
- Gate
- Water Source
- Planned Mixed Construction Line
- Access or Improved Road
- Uncontained
- Wildfire Daily Fire Perimeter
- IR Intense Heat
- IR Scattered Heat
- State Primary Route
- Unimproved Road
- Forest Service Roads Closed
- Trail
- Administrative FS Boundary
- USFS Roadless Areas
- Forest Service Land



1:12,660
1 IR Remote Incident Support
8/23/2022 0835
North American 1983
Datum: Lant Long Grid



Operations